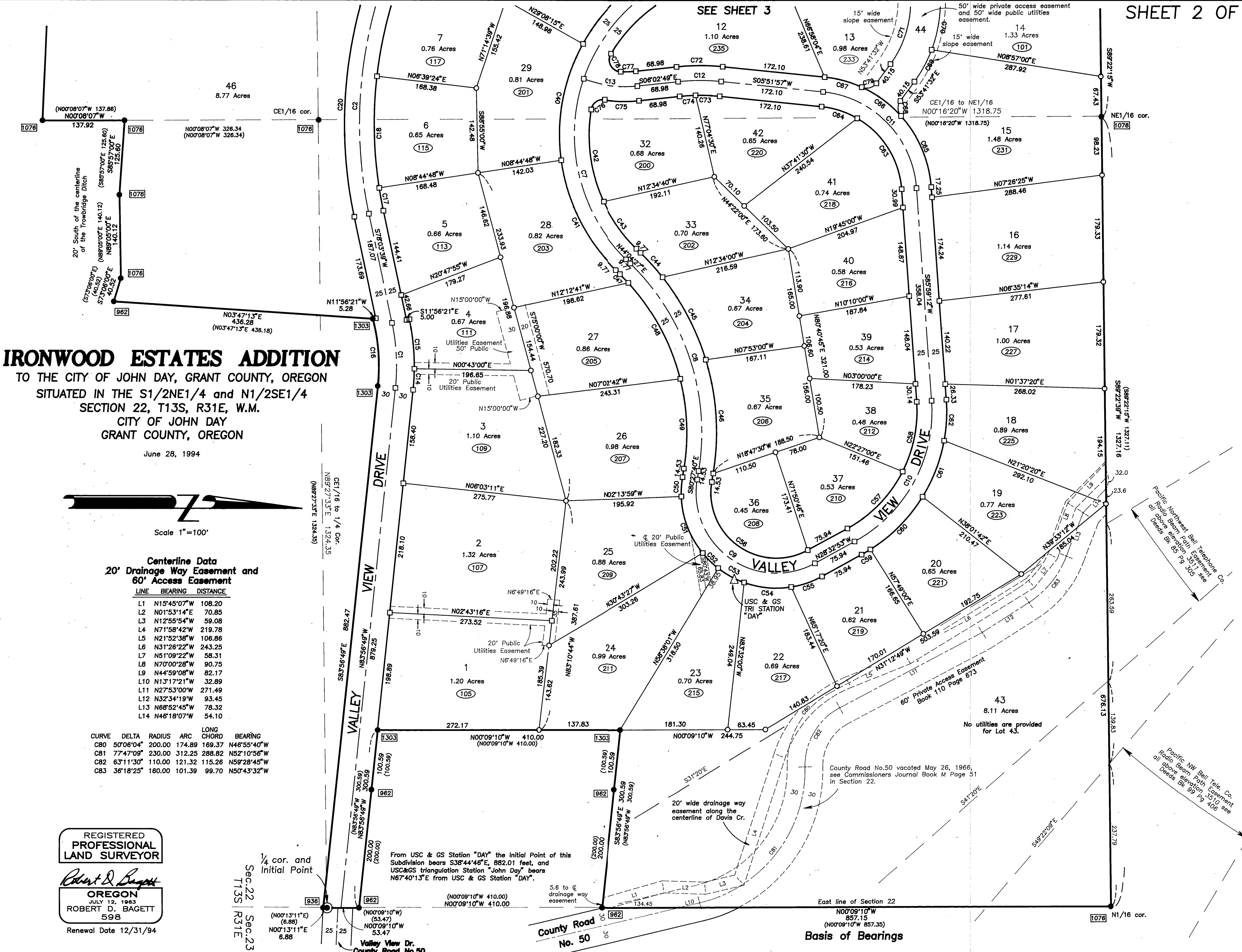
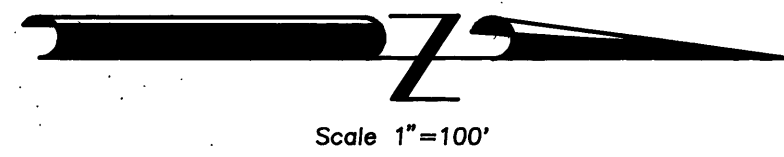


SEE SHEET 3



IRONWOOD ESTATES ADDITION
 TO THE CITY OF JOHN DAY, GRANT COUNTY, OREGON
 SITUATED IN THE S1/2NE1/4 and N1/2SE1/4
 SECTION 22, T13S, R31E, W.M.
 CITY OF JOHN DAY
 GRANT COUNTY, OREGON

June 28, 1994



Scale 1"=100'

**Centerline Data
 20' Drainage Way Easement and
 60' Access Easement**

LINE	BEARING	DISTANCE
L1	N15°45'07"W	108.20
L2	N01°53'14"E	70.85
L3	N12°55'54"W	59.08
L4	N71°58'42"W	219.78
L5	N21°52'38"W	106.86
L6	N31°26'22"W	243.25
L7	N51°09'22"W	58.31
L8	N70°00'28"W	90.75
L9	N44°59'08"W	82.17
L10	N13°17'21"W	32.89
L11	N27°53'00"W	271.49
L12	N32°34'19"W	93.45
L13	N68°52'45"W	78.32
L14	N46°18'07"W	54.10

CURVE	DELTA	RADIUS	ARC	CHORD	BEARING
C80	50°06'04"	200.00	174.89	169.37	N46°55'40"W
C81	77°47'09"	230.00	312.25	288.82	N52°10'56"W
C82	63°11'30"	110.00	121.32	115.26	N59°28'45"W
C83	36°18'25"	160.00	101.39	99.70	N50°43'32"W

REGISTERED
**PROFESSIONAL
 LAND SURVEYOR**
Robert D. Baggett
OREGON
 JULY 12, 1983
ROBERT D. BAGETT
 598
 Renewal Date 12/31/94

Sec. 22 | Sec. 23
 T13S | R31E

From USC & GS Station "DAY" the Initial Point of this Subdivision bears S38°44'46"E, 882.01 feet, and USC&GS triangulation Station "John Day" bears N67°40'13"E from USC & GS Station "DAY".

Basis of Bearings

Pacific Northwest Bell Telephone Co.
 Radio Beam Path Easement
 all above elevation 3510' see
 Deeds BK 95 Pg 305

Pacific NW Bell Tele. Co.
 Radio Beam Path Easement
 all above elevation 3510' see
 Deeds BK 95 Pg 406

No utilities are provided for Lot 43.

County Road No. 50 vacated May 26, 1966, see Commissioners Journal Book M Page 51 in Section 22.

20' wide drainage way easement along the centerline of Davis Cr.

5.6 to 6' drainage way easement