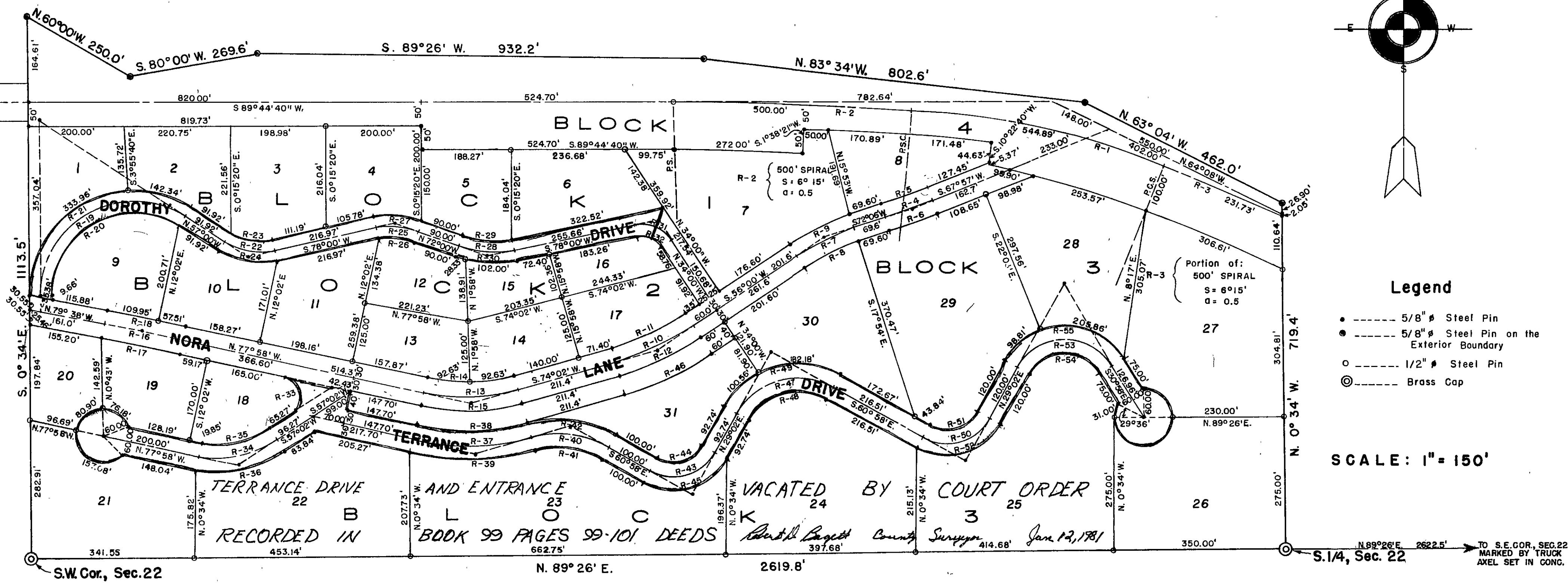
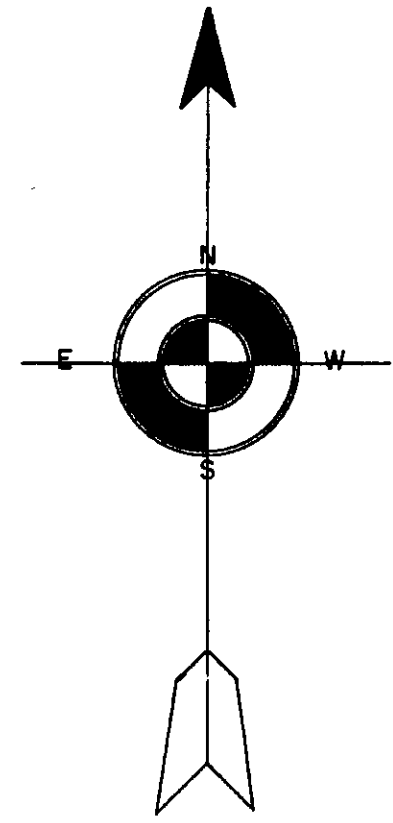


# HALL ACRES SUBDIVISION

## GRANT COUNTY, OREGON

### T.13 S., R.31 E., W.M.

PORTION OF DOROTHY DRIVE VACATED BY RESOLUTION  
 NO. 86-06 - RECORDED IN BOOK 138 - PAGES 553-554 DEEDS  
 Robert W. Baggett, COUNTY SURVEYOR - APRIL 3, 1989



Curve No.	D	Δ	T	R	L. Curve
R-1	2° 30'	T <sub>a</sub> =26°07'20"	T <sub>b</sub> =782.64'		544.89'
R-2	See Spiral Data	on Plot			
R-3	See Spiral Data	on Plot			
R-4	4°00'	4°09'	51.90'	1,432.46'	103.75'
R-5		4°09'	50.81'	1,402.46'	101.58'
R-6		4°09'	52.99'	1,462.46'	105.93'
R-7	12°00'	16°06'	67.50'	477.27'	134.11'
R-8		16°06'	63.26'	447.27'	125.68'
R-9		16°06'	71.74'	507.27'	142.54'
R-10	10°00'	18°02'	90.90'	572.84'	180.30'
R-11		18°02'	86.14'	542.84'	170.85'
R-12		18°02'	95.66'	602.84'	189.74'
R-13	14°00'	28°00'	102.00'	409.10'	199.92'
R-14		28°00'	94.52'	379.10'	185.26'

Curve No.	D	Δ	T	R	L. Curve
R-15		28°00'	109.48'	439.10'	214.58'
R-16	1°00'	1°40'	83.30'	5,726.90'	166.59'
R-17		1°40'	82.86'	5,696.90'	165.72'
R-18		1°40'	83.74'	5,756.90'	167.46'
R-19		123°34'	365.00'	195.85'	422.38'
R-20		123°34'	318.41'	170.85'	368.46'
R-21		123°34'	411.59'	220.85'	476.30'
R-22		45°00'	60.00'	144.85'	113.76'
R-23		45°00'	49.64'	119.85'	94.13'
R-24		45°00'	70.35'	169.85'	133.40'
R-25		30°00'	43.30'	161.60'	84.61'
R-26		30°00'	36.60'	136.60'	71.52'
R-27		30°00'	50.00'	186.60'	97.70'
R-28		30°00'	60.00'	223.92'	117.24'

Curve No.	D	Δ	T	R	L. Curve
R-29		30°00'	53.30'	198.92'	104.15'
R-30		30°00'	66.70'	248.92'	130.33'
R-31		68°00'	50.00'	74.13'	87.98'
R-32		68°00'	33.14'	49.13'	58.31'
R-33		135°00'	100.00'	41.42'	97.59'
R-34		45°00'	87.57'	211.42'	166.05'
R-35		45°00'	75.15'	181.42'	142.49'
R-36		45°00'	100.00'	241.42'	189.61'
R-37		28°00'	126.93'	509.10'	248.79'
R-38		28°00'	119.45'	479.10'	234.13'
R-39		28°00'	134.41'	539.10'	263.45'
R-40		45°00'	87.57'	211.42'	166.05'
R-41		45°00'	75.15'	181.42'	142.49'
R-42		45°00'	100.00'	241.42'	189.61'

Curve No.	D	Δ	T	R	L. Curve
R-43		90°00'	100.00'	100.00'	157.08'
R-44		90°00'	70.00'	70.00'	109.96'
R-45		90°00'	130.00'	130.00'	204.20'
R-46		18°02'	102.01'	642.84'	202.33'
R-47		90°00'	150.00'	150.00'	235.62'
R-48		90°00'	120.00'	120.00'	188.50'
R-49		90°00'	180.00'	180.00'	282.74'
R-50		90°00'	100.00'	100.00'	157.08'
R-51		90°00'	70.00'	70.00'	109.96'
R-52		90°00'	130.00'	130.00'	204.20'
R-53		120°00'	200.00'	115.47'	241.48'
R-54		120°00'	148.04'	85.47'	179.01'
R-55		120°00'	251.96'	145.47'	304.67'