

33

# AMENDED CRISP HEIGHTS HOMESITES

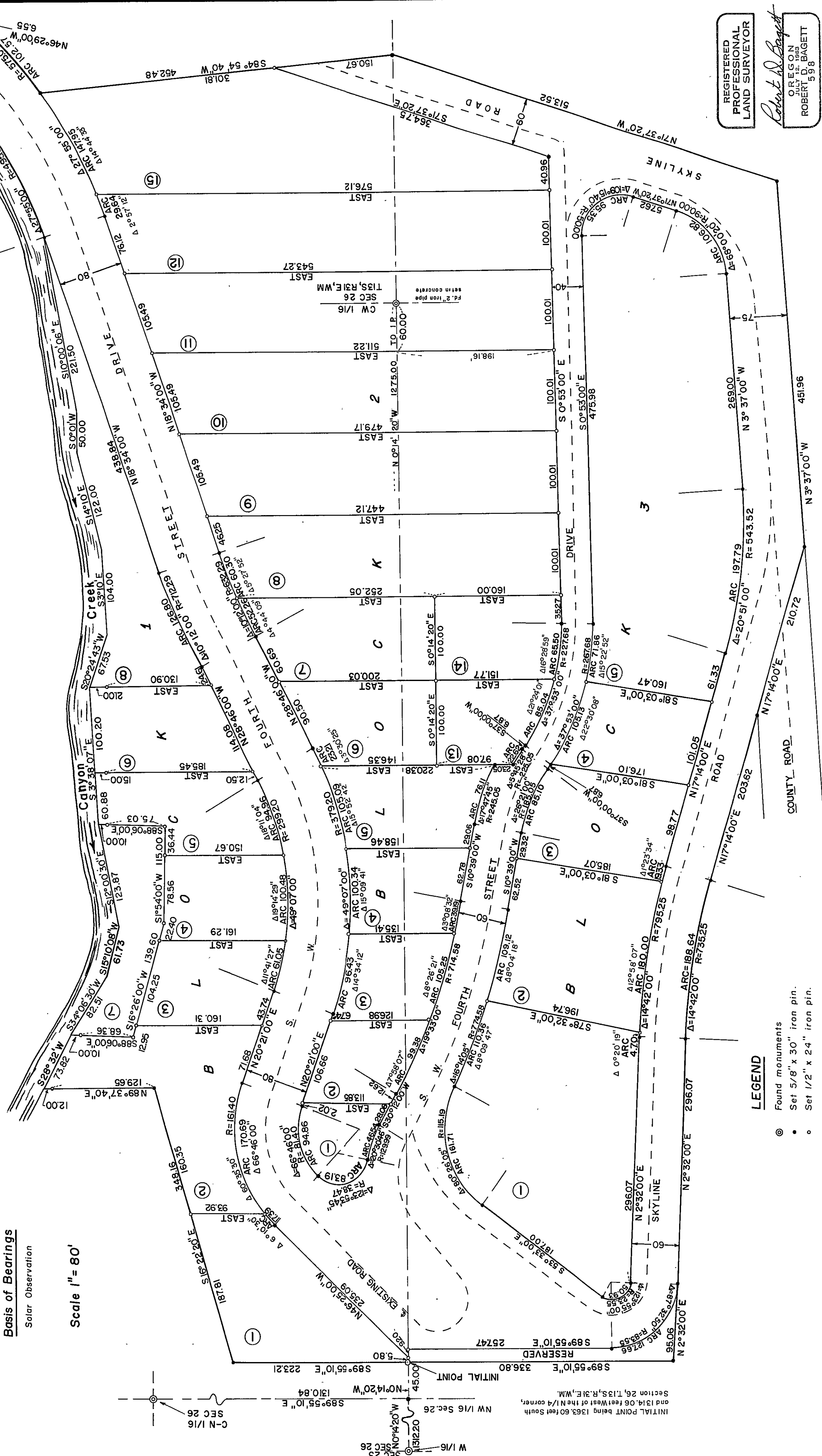
## CITY OF JOHN DAY

### GRANT COUNTY, OREGON

RECEIVED AND FILED  
 JUL 8 1974  
 JOHN LIVEIRA, County Clerk  
 Deputy

Basis of Bearings  
 Solar Observation

Scale 1" = 80'



REGISTERED  
 PROFESSIONAL  
 LAND SURVEYOR  
 Robert D. Baggett  
 OREGON  
 LICENSE NO. 598

INITIAL POINT being 1363.60 feet South  
 and 1314.06 feet West of the N/4 corner,  
 Section 26, T13S, R31E, W.M.

W 1/6  
 SEC 23  
 N 0°14'20" W  
 1312.20  
 SEC 26  
 N 0°14'20" W  
 1310.84  
 S 89°55'10" E  
 1310.84  
 C-N 1/16  
 SEC 26

INITIAL POINT  
 45.00  
 S 89°55'10" E  
 223.21

RESERVED  
 25747  
 S 89°55'10" E  
 336.80

INITIAL POINT  
 5.80  
 S 89°55'10" E  
 223.21