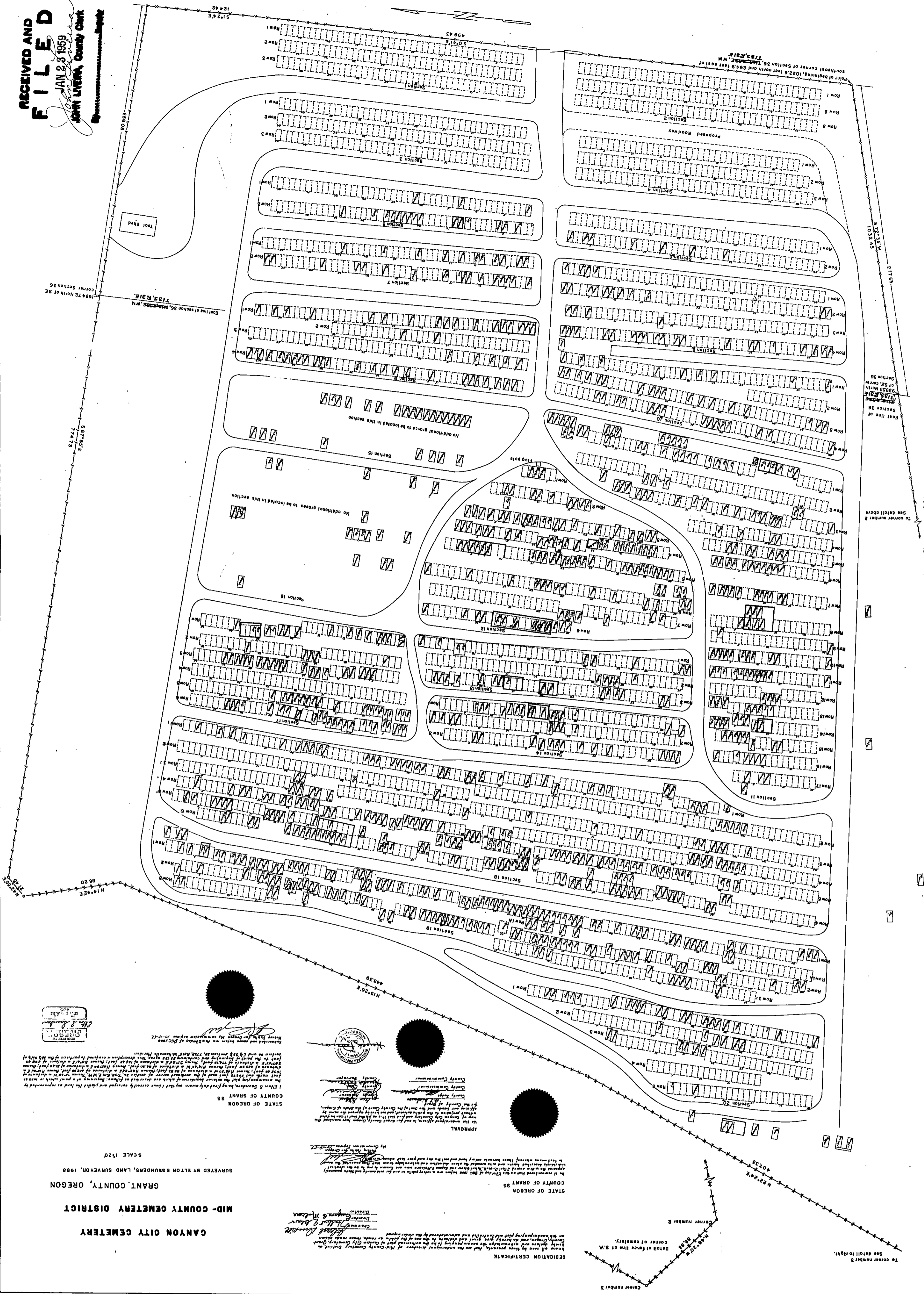


RECEIVED AND FILED  
JAN 23 1959  
JOHN LITVAK, County Clerk



CANYON CITY CEMETERY  
MID-COUNTY CEMETERY DISTRICT  
GRANT COUNTY, OREGON

SURVEYED BY ELTON SAUNDERS, LAND SURVEYOR, 1958  
SCALE 1/2" = 10'

REGISTERED PROFESSIONAL LAND SURVEYOR  
ELTON SAUNDERS  
1101 S. 10th St.  
Medford, Oregon

I, Elton S. Saunders, being duly sworn, depose and say that I have carefully surveyed and platted the land and improvements thereon shown on the above plat, and that the same are true and correct according to the best of my knowledge and belief.

My Commission Expires 10-17-57

APPROVAL  
My Commission Expires 10-17-57

STATE OF OREGON  
COUNTY OF GRANT

DELEGATION CERTIFICATE  
I have all things by these presents, that are the undersigned members of the Board of Directors of Canyon City Cemetery, Grant County, Oregon, and as hereby given and granted to the undersigned, Elton S. Saunders, Land Surveyor, of Grant County, Oregon, full and complete authority, power, sole privilege and full right to survey, locate, lay out, and plat the land and improvements thereon shown on the above plat, and to execute and record the same, and to do all things necessary to carry out the purposes of this certificate, and to do all things necessary to carry out the purposes of this certificate, and to do all things necessary to carry out the purposes of this certificate.

Elton S. Saunders, Land Surveyor  
Elton S. Saunders, Land Surveyor

TO CORNER NUMBER 3  
SEE DETAIL TO RIGHT.  
CORNER NUMBER 3  
DETAIL OF CORNER LINE OR S.W.  
CORNER OF CEMETERY.  
STATE OF OREGON  
COUNTY OF GRANT  
SECTION 20  
EAST LINE OF SECTION 20, 1037.34 S.  
SECTION 19  
EAST LINE OF SECTION 19, 1037.34 S.  
SECTION 18  
EAST LINE OF SECTION 18, 1037.34 S.  
SECTION 17  
EAST LINE OF SECTION 17, 1037.34 S.  
SECTION 16  
EAST LINE OF SECTION 16, 1037.34 S.  
SECTION 15  
EAST LINE OF SECTION 15, 1037.34 S.  
SECTION 14  
EAST LINE OF SECTION 14, 1037.34 S.  
SECTION 13  
EAST LINE OF SECTION 13, 1037.34 S.  
SECTION 12  
EAST LINE OF SECTION 12, 1037.34 S.  
SECTION 11  
EAST LINE OF SECTION 11, 1037.34 S.  
SECTION 10  
EAST LINE OF SECTION 10, 1037.34 S.  
SECTION 9  
EAST LINE OF SECTION 9, 1037.34 S.  
SECTION 8  
EAST LINE OF SECTION 8, 1037.34 S.  
SECTION 7  
EAST LINE OF SECTION 7, 1037.34 S.  
SECTION 6  
EAST LINE OF SECTION 6, 1037.34 S.  
SECTION 5  
EAST LINE OF SECTION 5, 1037.34 S.  
SECTION 4  
EAST LINE OF SECTION 4, 1037.34 S.  
SECTION 3  
EAST LINE OF SECTION 3, 1037.34 S.  
SECTION 2  
EAST LINE OF SECTION 2, 1037.34 S.  
SECTION 1  
EAST LINE OF SECTION 1, 1037.34 S.  
TO CORNER NUMBER 2  
SEE DETAIL TO RIGHT.  
CORNER NUMBER 2  
DETAIL OF CORNER LINE OR S.W.  
CORNER OF CEMETERY.  
SECTION 20  
EAST LINE OF SECTION 20, 1037.34 S.  
SECTION 19  
EAST LINE OF SECTION 19, 1037.34 S.  
SECTION 18  
EAST LINE OF SECTION 18, 1037.34 S.  
SECTION 17  
EAST LINE OF SECTION 17, 1037.34 S.  
SECTION 16  
EAST LINE OF SECTION 16, 1037.34 S.  
SECTION 15  
EAST LINE OF SECTION 15, 1037.34 S.  
SECTION 14  
EAST LINE OF SECTION 14, 1037.34 S.  
SECTION 13  
EAST LINE OF SECTION 13, 1037.34 S.  
SECTION 12  
EAST LINE OF SECTION 12, 1037.34 S.  
SECTION 11  
EAST LINE OF SECTION 11, 1037.34 S.  
SECTION 10  
EAST LINE OF SECTION 10, 1037.34 S.  
SECTION 9  
EAST LINE OF SECTION 9, 1037.34 S.  
SECTION 8  
EAST LINE OF SECTION 8, 1037.34 S.  
SECTION 7  
EAST LINE OF SECTION 7, 1037.34 S.  
SECTION 6  
EAST LINE OF SECTION 6, 1037.34 S.  
SECTION 5  
EAST LINE OF SECTION 5, 1037.34 S.  
SECTION 4  
EAST LINE OF SECTION 4, 1037.34 S.  
SECTION 3  
EAST LINE OF SECTION 3, 1037.34 S.  
SECTION 2  
EAST LINE OF SECTION 2, 1037.34 S.  
SECTION 1  
EAST LINE OF SECTION 1, 1037.34 S.