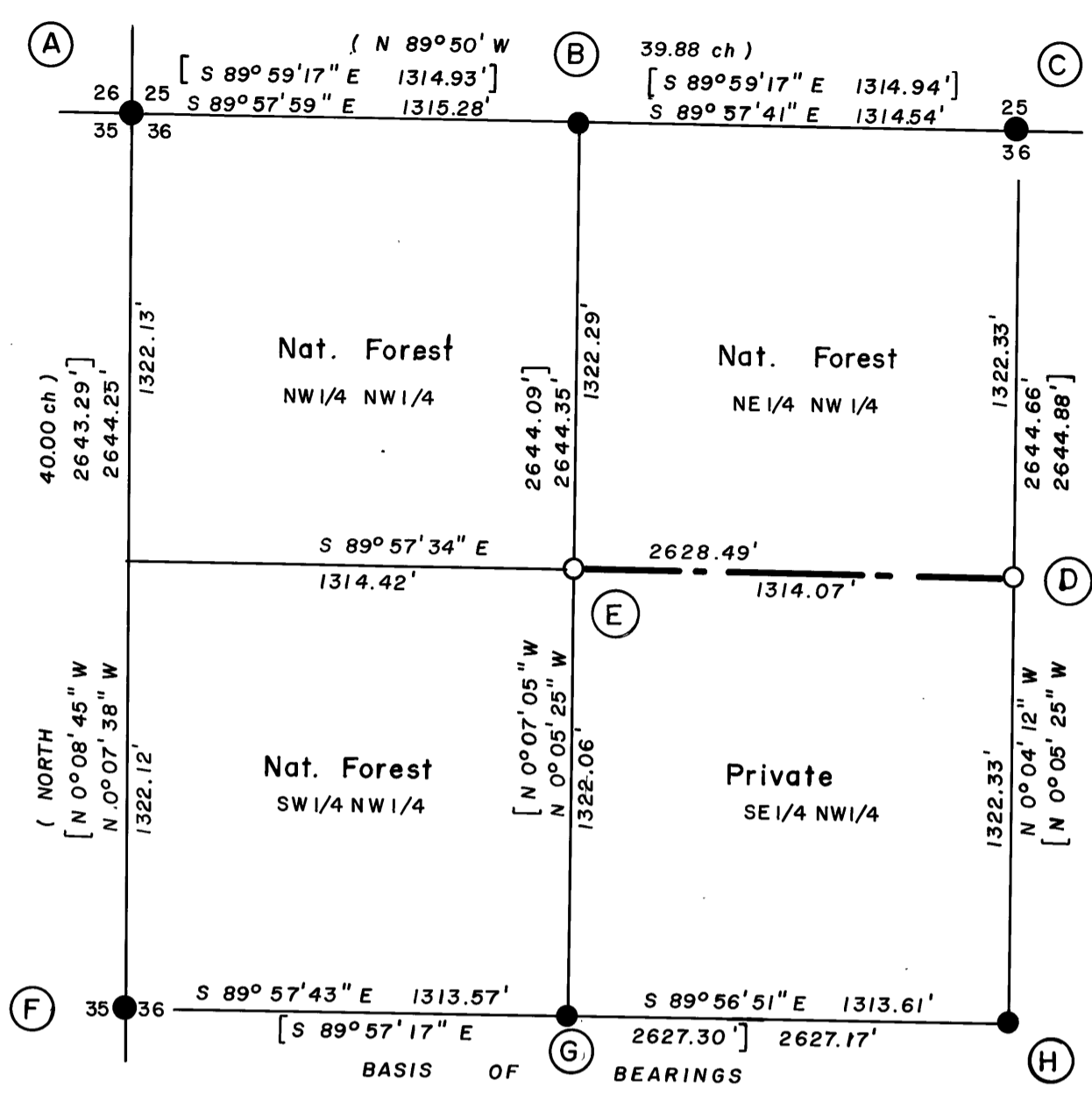


EXAMINED AND ACCEPTED FOR THE U.S. FOREST SERVICE  
 THIS 23 DAY OF June, 1988.  
*T. B. Parsons* COR.  
 I CERTIFY THAT THIS SURVEY WAS PERFORMED AT THE REQUEST  
 OF THE MALHEUR NATIONAL FOREST SUPERVISOR.  
*T. B. Parsons* 6/22/88  
 SIGNATURE DATE



**NARRATIVE TO ACCOMPANY PLAT**

The purpose of this survey is to mark boundary lines between National Forest Land and privately owned land in and adjoining the northwest quarter of Section 36, T 18 S, R 30 E, W.M. This survey was performed at the request of U.S.D.A, Forest Service, Malheur National Forest under Contract No. 53-04H1-7-4011, Smokey/Sun Cadastral Survey.

**HISTORY** - The original survey was performed in 1880 by Robb and Eckelson under Contract No 366. The northwest corner and the north quarter corner of the section were remonumented in 1978 by Sherman Anderson from original evidence. The section was subdivided in 1979 by Duane Griffith (Harney County Survey No. 211).

**SURVEY** - Basis of bearings is the line between the west quarter corner and the center quarter corner from HCS 211. A closed loop random traverse was run around the exterior of the northwest quarter of the section as required for subdivision, tying to the existing monuments shown. An additional closed random traverse was run through the interior of the quarter section, generally along the property boundary lines, for posting and internal monumentation. Survey and subdivision of the section was conducted according to the original government notes and plat, and in accordance with the principles outlined in the Manual of Surveying Instructions, 1973. New corners were set radially from points on the previously established control traverses. True property boundary lines were determined by measuring offsets from the control traverse lines.

Old boundary line posts were removed from the west, north, and east lines of the NE 1/4 of the NW 1/4, and from the all lines of the SW 1/4 of the SW 1/4 of Section 36. A fence line run generally along the boundary line posted in this survey. No other obvious trespass was noted.

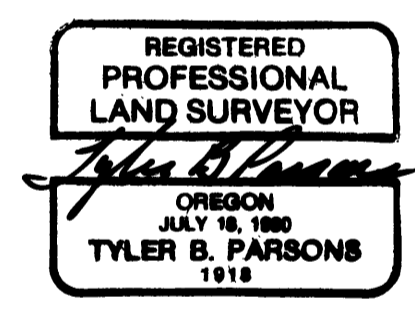
Notes for this survey are contained in Field Book 2, Smokey/Sun Cadastral Survey. Field notes and calculation sheets of this survey are on file in this office, and with the Survey Officer, Malheur National Forest.

**GENERAL NOTES** - Equipment used in this survey included a TOPCON GTS-2, and a 100 foot steel chain. Traverses consist of closed loops which were adjusted by balancing angles and applying the Compass Rule method of adjustment. Bearings of shown on the plat were derived by plane survey techniques, and have not been rotated to compensate for convergence of meridians. Aluminum monuments set in this survey consist of a 3K" aluminum cap with magnet, riveted to a 2K" aluminum pipe 30" long with a flared base. Directions to bearing trees are based on the solar observation used to establish directions of lines in this survey. All bearing trees marked in this survey have a 3/4" brass washer marked "PLS 1918" attached to the BT blaze. Measurements to all bearing trees in this survey were made to the center of the tree, except where specifically noted. Bearing trees have blazes and bands painted red and appropriate Forest Service signs attached. In the Corner Notes, Ponderosa Pine is abbreviated P. Pine and Lodgepole Pine is abbreviated L. Pine. Unless otherwise noted, pine refers to Ponderosa or Yellow Pine. Record bearing tree information is denoted by ( ). All corners set during this survey have a 6 foot steel fence post driven approximately 3 to 5 feet away with appropriate Forest Service signs attached. Boundary lines are marked with steel fence posts with Property Boundary signs.

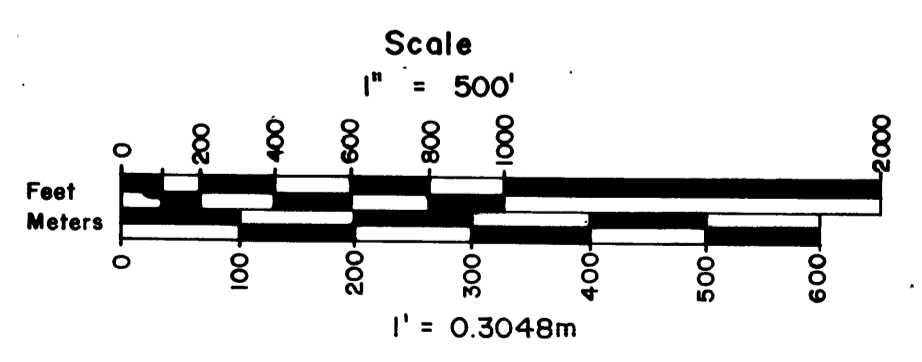
- E Set a 3K"x30" aluminum monument 20" in the ground in a mound of stone. T18S R30E  
 I establish new bearing trees: NW1/16  
 A 9" L. Pine bears S 94° W 67.5 ft, scribed NW1/16S36BT. +  
 A 14" P. Pine bears N 74° E 76.3 ft, scribed NW1/16S36BT. S36  
 PLS1918  
 1988
- F Found a 2K" brass cap on an iron pipe in a mound of stone. T18S R30E  
 A 22" P. Pine bears S 47° E 55.7 ft, scribed 1/4S36BT, 1/4  
 with washer "PLS644" (S 46° E 56.0 ft). S35/S36  
 A 19" P. Pine bears S 64° W 78.8 ft, scribed 1/4S35BT, 1979  
 with washer "PLS644" (S 64° W 79.2 ft). OPLS644
- G Found a 2K" brass cap on an iron pipe. T18S R30E  
 An 8" L. Pine bears N 25-3/4° W 107.5 ft, scribed CW1/16S36BT, W1/16  
 with washer "PLS644" (N 24° W 107.7 ft). C----C  
 A 20" L. Pine bears S 86° W 98.0 ft, scribed CW1/16S36BT, S36  
 with washer "PLS 644" (N 87° E 98.2 ft). 1979  
 OPLS644
- H Found a 2K" brass cap on an iron pipe in a mound of stone. T18S R30E  
 No bearing trees within range. C1/4  
 +  
 S36  
 1979  
 OPLS644

**SURVEYOR'S CERTIFICATE**

I, Tyler B. Parsons, a Registered Land Surveyor in the State of Oregon, do hereby certify that this plat and the notes hereon are a correct representation of a survey I performed at the request of the U.S.D.A, Forest Service during the period 28 April to 30 April 1988, in accordance with the statutes of the State of Oregon; and the articles of my contract.



- LEGEND**
- Found monument, as noted.
  - (○) Set a 3K"x30" aluminum monument, as noted.
  - [ ] Record information, GLO 1884.
  - [ ] Record information, Harney CS 211.
  - Boundary line posted this survey.
  - (A) Corner reference.



**CORNER NOTES**

- A Found a 2K" brass cap on an iron pipe in a mound of stone. T18S R30E  
 A 10" Fir bears S 54° W 31.6 ft, scribed T18SR30ES35BT, S26/S25  
 with washer "PLS1067", (S 6°30' W 31.8 ft). ----  
 An 11" Fir bears S 55° E 22.6 ft, scribed T18SR30ES36BT, S35/S36  
 (S 54°30' W 22.6 ft). PLS1067  
 A 14" P. Pine bears N 34° E 94.6 ft, scribed T18SR30ES25BT, 1978  
 with washer "PLS1067" (N 35°30' E 94.5).  
 A 17" P. Pine bears N 67° W 33.3 ft, healed blaze (N 64° W 40.0 ft).
- B Found a 2K" brass cap on an iron pipe in a mound of stone. T18S R30E  
 A 12" L. Pine bears N 62° W 23.3 ft, scribed W1/16S25BT, S25  
 with washer "PLS 644" (N 62° W 23.4 ft). W1/16---  
 A 10" L. Pine bears S 18° W 15.7 ft, scribed W1/16S36BT, S36  
 with washer "PLS 644" (S 18° W 16.1 ft). 1979  
 OPLS644
- C Found a 3K" aluminum monument in a mound of stone. T18S R30E  
 The roothole of a P.Pine, down & dead, bears N 48-3/4° W 8.2 ft. S25  
 An 18" P. Pine bears S 52-3/4° W, 23.0 ft, scribed 1/4S36BT, 1/4---  
 with washer "PLS 1067" (N 52° E 23.3 ft). S36  
 A 22" P. Pine bears N 13° E 39.2 ft, scribed 1/4S25BT, with PLS1067  
 washer "PLS 1067" (S 14° W 39.6 ft). 1978
- D Set a 3K"x30" aluminum monument 16" in the ground in a mound T18S R30E  
 of stone. C  
 I establish new bearing trees: NI/16/S36  
 An 8" P. Pine bears N 54° E 32.1 ft, scribed CN1/16S36BT. C  
 A 5" Juniper bears S 41-3/4° E 48.3 ft, scribed CN1/16S36BT. PLS1918  
 1988

**RECORD OF SURVEY**  
 for the  
**U.S. Forest Service**  
**Malheur National Forest**  
**NW 1/4, Section 36, T 18 S, R 30 E, W.M.**  
**Grant County, Oregon**

**Parsons Surveying**  
**1915 S.E. Stone Street**  
**Corvallis, OR 97333**  
**(503) 752-7515**

Job No. 8722D  
**JULY 7, 1988**

**RECEIVED AND FILED**  
**JUL 21 1988**

OFFICE OF COUNTY SURVEYOR  
*T. B. Parsons*