

VOLNY VIEW ESTATES

SITUATED IN THE NORTH 1/2 SEC. 35 LYING EAST OF PLEASANT HILL CO. RD., N.W. 1/4 SEC. 36 & W. 1/2 W. 1/2 N.E. 1/4 SEC. 36, T.13S., R.30E., W.M., GRANT CO. OR.



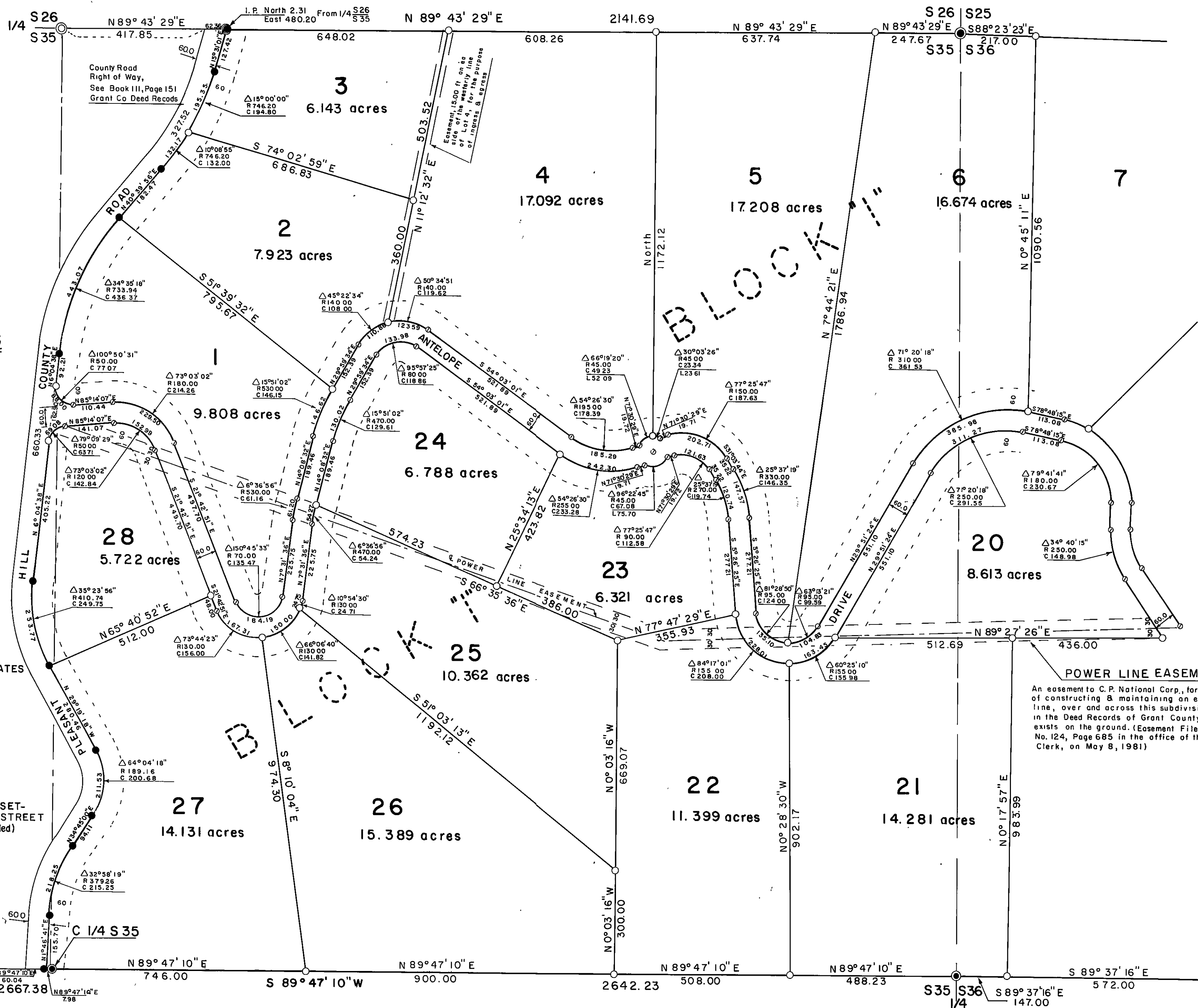
BASIS OF BEARINGS

SOLAR OBSERVATION

SCALE: 1" = 200'

LEGEND

- FOUND 2-1/2" BRASS CAP MON. SET 1981
- FOUND GRANT CO. SURV. BRASS CAP MON.
- FOUND 2-1/2" BRASS CAP MON. STAMPED: INITIAL POINT VOLNY VIEW ESTATES
- FOUND 5/8" STEEL PIN
- SET 5/8"x30" STEEL PIN
- SET 1/2"x24" STEEL PIN
- MINIMUM BUILDING SET-BACK LINE, 50' FROM STREET (60' Shown & Recommended)



POWER LINE EASEMENT
 An easement to C.P. National Corp., for the purpose of constructing & maintaining an electrical power line, over and across this subdivision, as described in the Deed Records of Grant County Or. and as exists on the ground. (Easement Filed in Library No. 124, Page 685 in the office of the Grant County Clerk, on May 8, 1981)