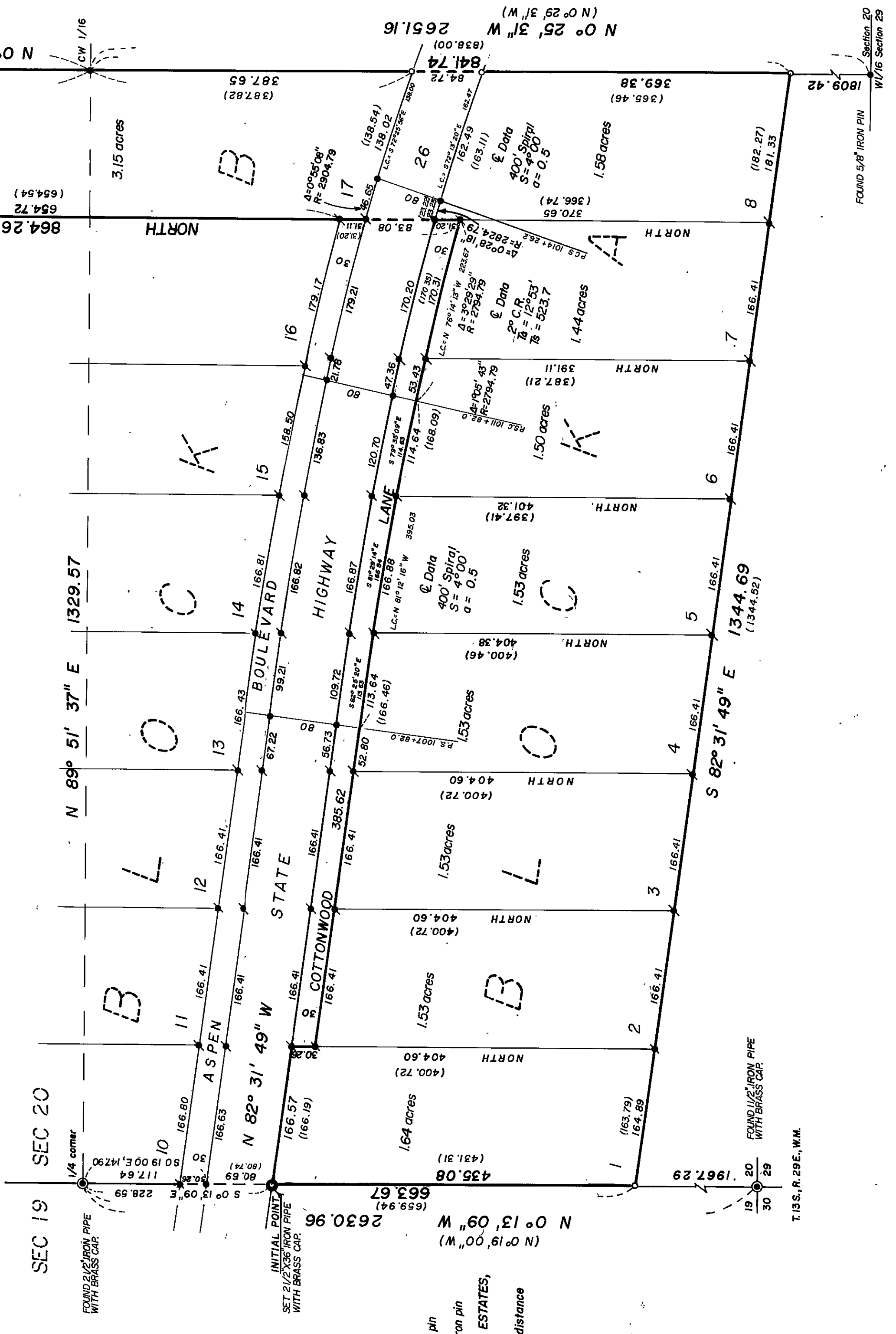
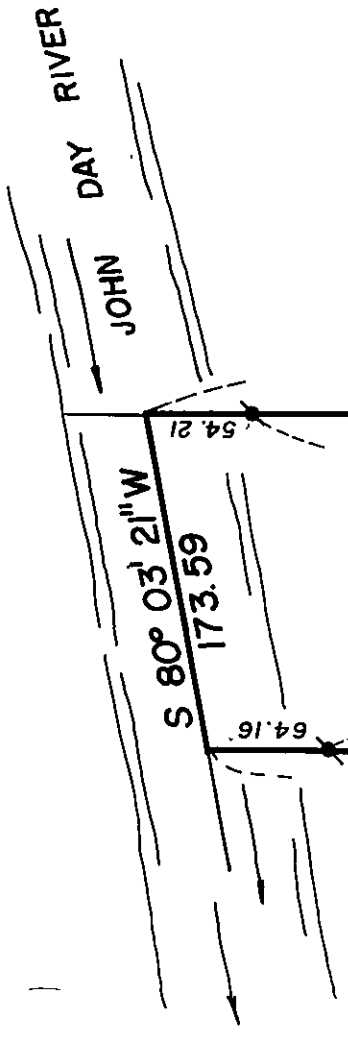


AMENDED PLAT OF
BLOCK A & LOT 17, BLOCK B,
RIVER ESTATES
 SITUATED IN SECTION 20, T 13 S, R 29 E, W.M.
 GRANT COUNTY, OREGON
 SCALE 1" = 100'



BASIS OF BEARING
 RIVER ESTATES PLAT

LEGEND

- Found original RIVER ESTATES 1/2"x24" iron pin
 - Found original RIVER ESTATES 5/8"x30" iron pin
 - Found 5/8"x30" pin set in original RIVER ESTATES, moved to corrected position as noted.
 - () Original RIVER ESTATES bearing and distance corrected in this survey.
- Reference, MAP OF SURVEY NO. 601

**REGISTERED
 PROFESSIONAL
 LAND SURVEYOR**

OREGON
 JULY 10, 1984
DUANE I. GRIFFITH
 644