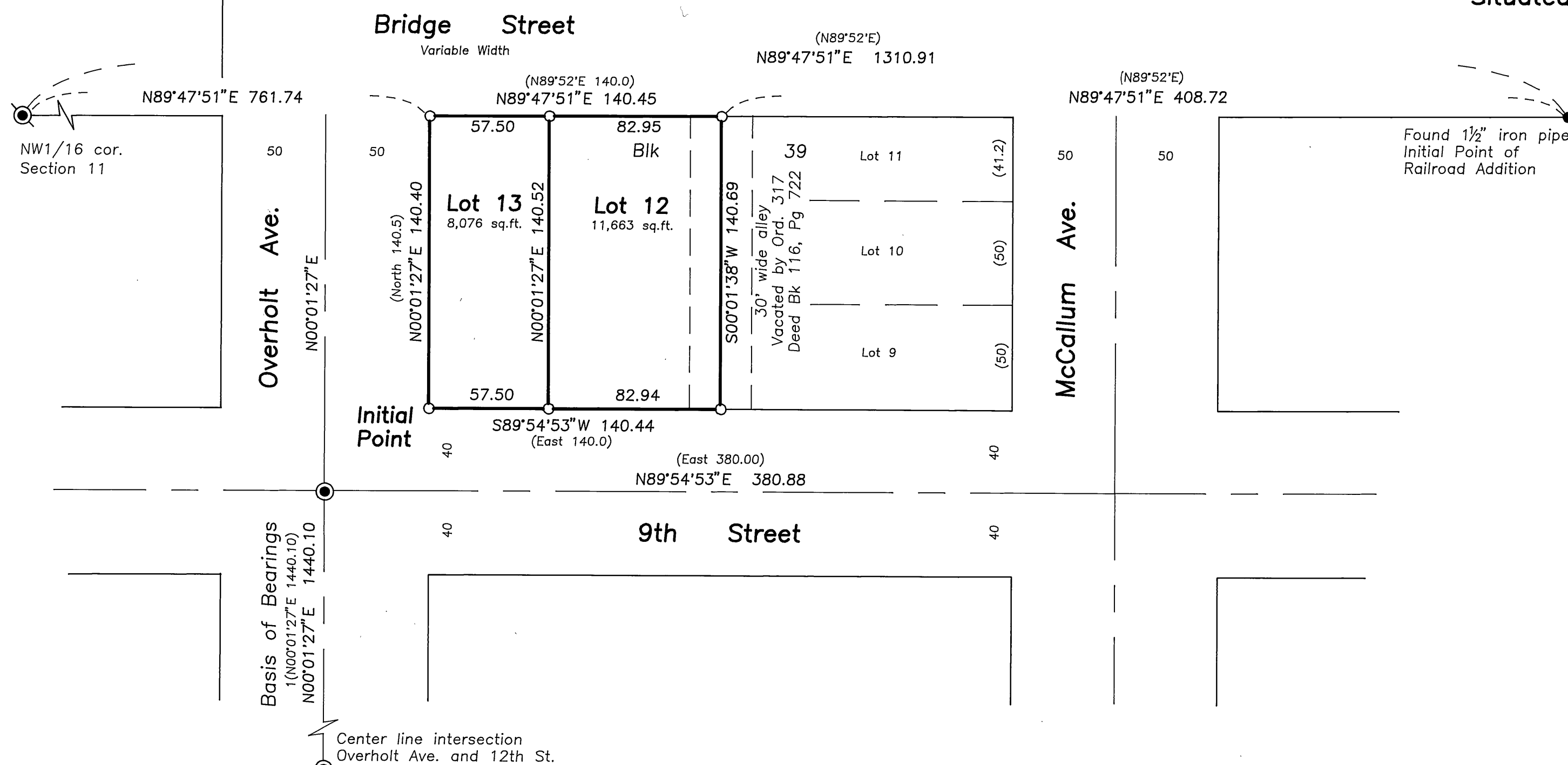


Replat of Prairie City Land Company's First Addition
 Lots 6, 7, and 8 of Block 39
 Situated in the NW1/4 of Section 11, T13S,R33E, W.M.
 City of Prairie City
 Grant County, Oregon

October 24, 2003



BASIS OF BEARINGS
 Survey No. 491

LEGEND

- ⊙ Found 5/8" iron pin with attached aluminum cap, see Land Partition 2000-18.
- ⊙ Found 3" brass cap set in concrete inside cast iron monument box, see Survey No. 491.
- Set 5/8"x30" iron pin with attached red plastic cap marked CORNERSTONE SURVEYING, INC.
- () Prairie City Land Company's First Addition record bearing and distance.
- () Survey No. 491 record bearing and distance.

Approvals

Approved this 2nd day of DEC., 2003

Robert D. Baggett
 Grant County Surveyor

Approved this 3rd day of Dec, 2003

Spencer McDonald
 Prairie City Planning Director

Approved by the Grant County Board of Commissioners
 this 3rd day of December, 2003.

County Judge Dennis Rymalda

Commissioner Boyd Britton

Commissioner Scott W. Myers

All ad valorem and special assessments due pursuant to
 law have been assessed and collected.

June L. Swinton
 Grant County Assessor and Tax Collector
 Date 12-02-2003

I do hereby certify that this plat was received on
 the 3rd day of December, 2003 at 3:45 o'clock
 P.M., and recorded as Replat of Prairie City Land
 Company's First Addition, Block 39.

Kathy McInnon
 Grant County Clerk

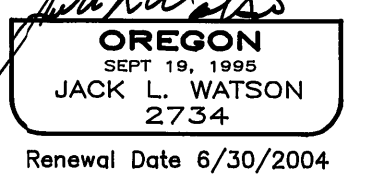
Surveyor's Certificate

I, Jack L. Watson, Professional Land Surveyor, registered in the State of Oregon, hereby certify that I have correctly surveyed and marked with proper monuments the lots of the re-plat of Lots 6, 7, and 8, Block 39, and the west half of the vacated alley in Prairie City Land Company's First Addition. Situated in the NW1/4 of Section 11, T13S, R33E, W.M., City of Prairie City, Grant County, Oregon, described as follows:

The Initial Point is the SW corner of said Block 39 which is a 5/8 inch iron pin with attached red plastic cap; thence N00°01'27"E, 140.40 feet; thence N89°47'51"E, 140.25 feet; thence S00°01'38"W, 140.69 feet; thence S89°54'53"W, 140.44 feet to the point of beginning.

Containing 19,739 Sq.Ft.

Cornerstone Surveying, Inc.
 233 S. Canyon Blvd.
 John Day, Oregon 97845



I do hereby certify that this is a true and exact copy of the original plat.

Jack L. Watson
 Jack L. Watson

Declaration

Know all people by these presents that we, Carl E. Johns and Ruth A. Johns, husband and wife, do hereby declare we are the owners of the lands described in the Surveyor's Certificate, and that we have caused the same to be re-platted into lots in accordance with the provisions of ORS Chapter 92 as shown hereon.

Carl E. Johns
 Carl E. Johns

Ruth A. Johns
 Ruth A. Johns

Acknowledgement

STATE OF OREGON } SS
 COUNTY OF GRANT }
 This instrument was acknowledged before me on this 3rd day of DECEMBER 2003, by Carl E. Johns and Ruth A. Johns.

Robert F. Bunch
 Notary Public of Oregon
 My commission expires: 8/24/2004



Narrative

This survey was performed at the request of Carl Johns. The purpose of this survey was to Re-Plat Lots 6, 7, and 8 and the west half of the vacated alley, Block 39, Prairie City Land Company's First Addition, into two lots as shown.

I searched the available records pertaining to these lots and made field measurements to locate the monuments shown. Center line monuments from Survey No. 491 were used to place the right of way lines of McCallum Ave., Overholt Ave. and 9th Street. The NW1/16 corner and the monument found at the Initial Point of Railroad Addition were used to establish the north line of Block 39. The newly established lot line is positioned in the location approved by Mr. Johns.

RECEIVED AND FILED

DEC. 5, 2003
 OFFICE OF COUNTY SURVEYOR
 Attest: James S. Hefner