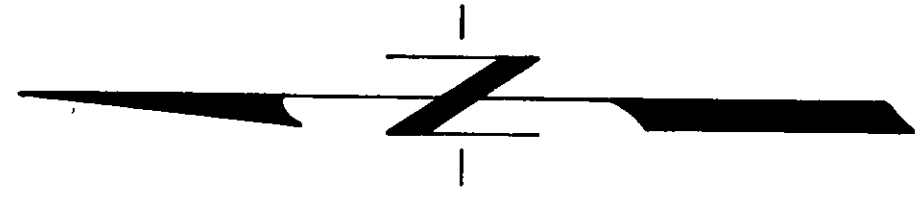
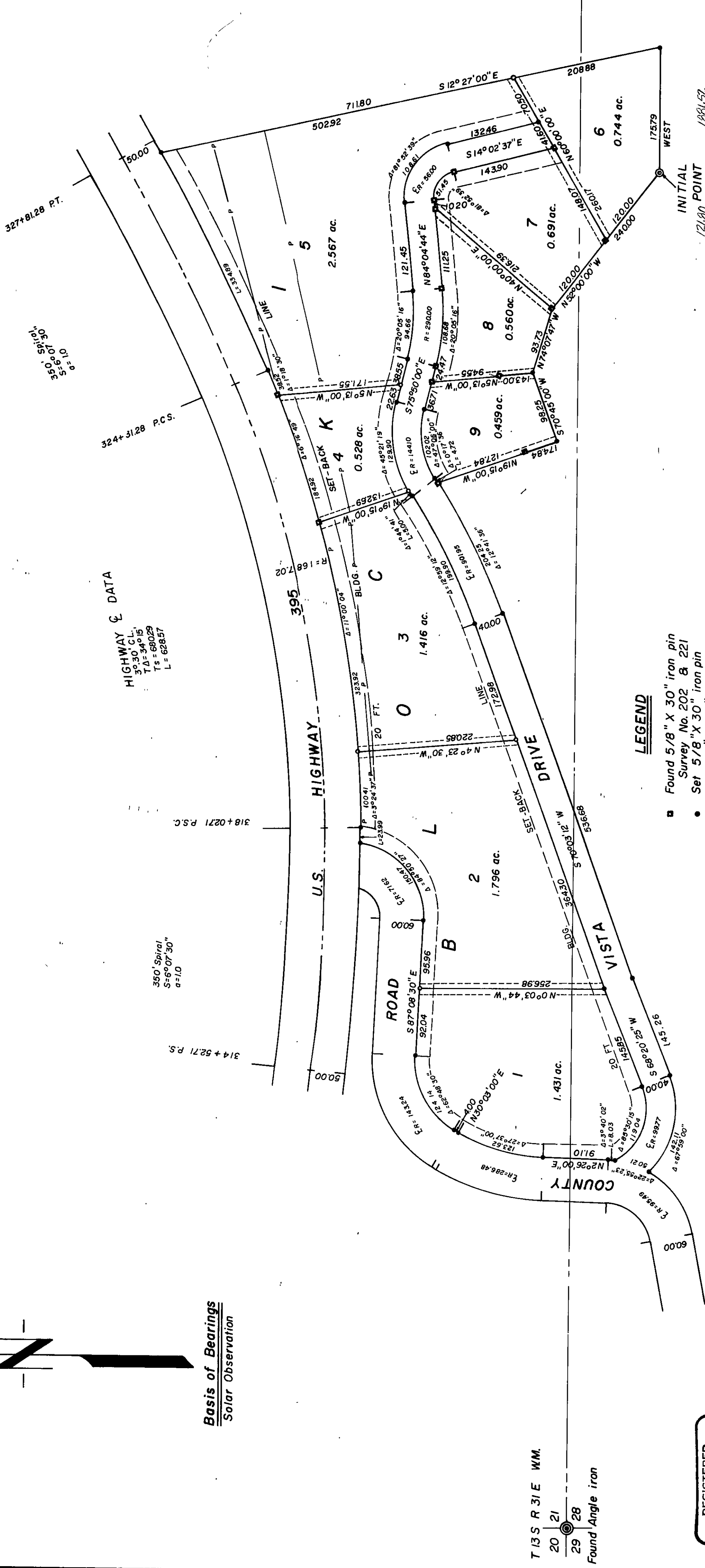


**TRACT A**  
**MOUNTAIN VIEW SUBDIVISION**  
 SITUATED IN SECTIONS 21 & 28, T.13 S., R.31 E., W.M.  
 GRANT COUNTY, OREGON

SCALE: 1" = 100'



Basis of Bearings  
 Solar Observation



**LEGEND**

- Found 5/8" x 30" iron pin
- Survey No. 202 & 221
- Set 5/8" x 30" iron pin
- Set 1/2" x 30" iron pin
- Initial point 2" x 36" iron pipe
- 20' Bldg. Set-Back Line
- 16' Public Utilities Easement
- Existing Power line

I do hereby certify that this is a true and exact copy of the original plat "TRACT A MOUNTAIN VIEW SUBDIVISION" as surveyed, subdivided and plotted.

*Robert D. Baggett*  
 BAGETT - GRIFFITH - FERGUSON

REGISTERED  
 OREGON  
 LAND SURVEYOR

*Robert D. Baggett*  
 JULY 12, 1963  
 ROBERT D. BAGETT  
 598

I do hereby certify that this is a true and exact copy of the original plat "TRACT A MOUNTAIN VIEW SUBDIVISION" as filed with this office.

*John Ferguson*  
 GRANT COUNTY CLERK

INITIAL  
 POINT  
 1981.52  
 #1688-foot South and #8968-foot  
 East of corner common to sections  
 20, 21, 28 and 29.  
 See Book 133  
 Page 242, Deeds