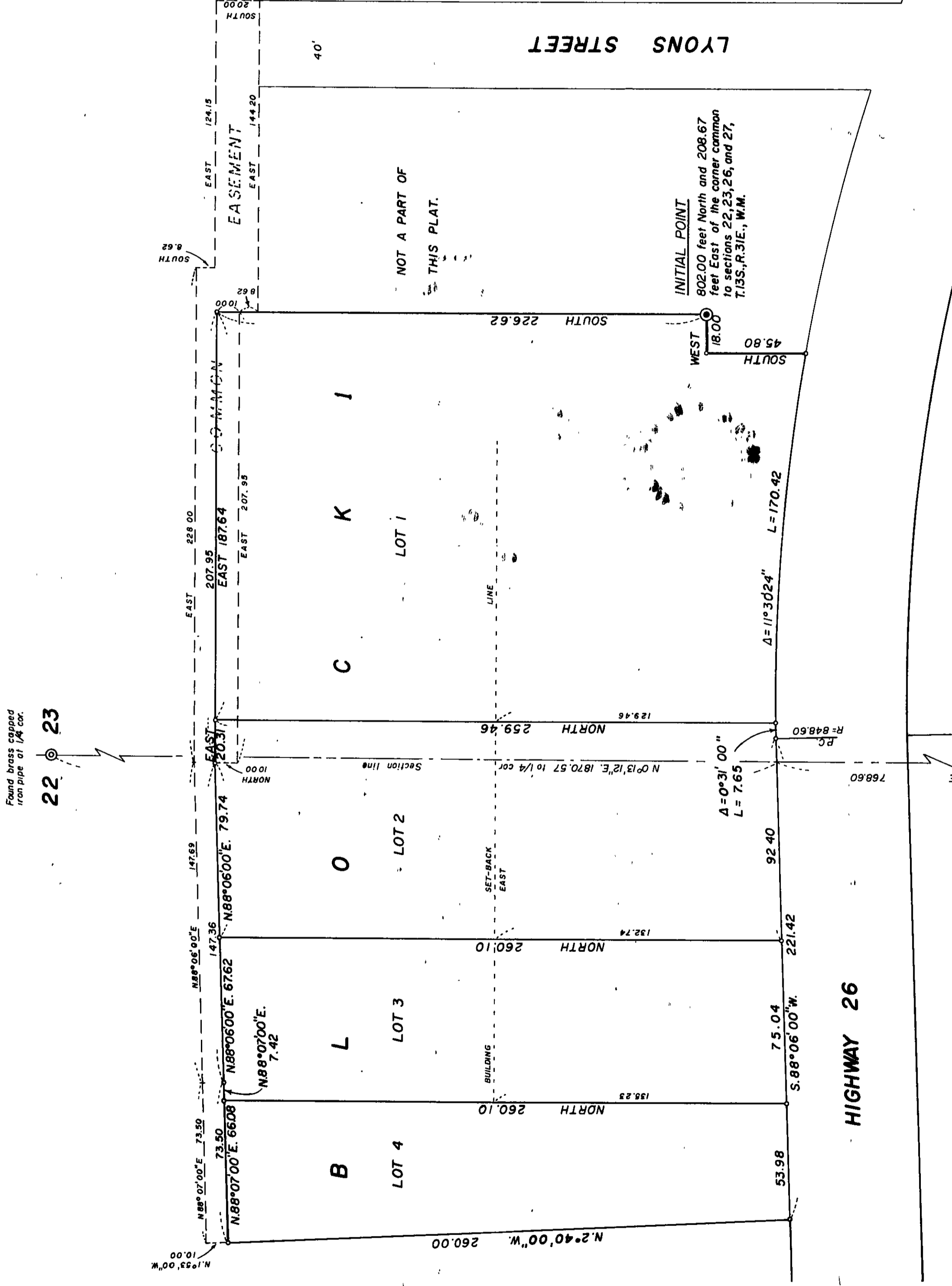


# JOHN DAY PLAZA ADDITION TO THE CITY OF JOHN DAY GRANT COUNTY, OREGON

SCALE 1" = 40'



Found brass capped iron pipe at 1/4 cor. 22 @ 23

Found axle set in concrete at section corner. 22 @ 23 27 @ 26



**BASIS OF BEARINGS**  
Solar Observation

### LEGEND

- Set 5/8" x 30" iron pin with attached plastic cap.
- ⊙ Found monument of record.
- ⊙ INITIAL POINT - Set 2" x 36" iron pipe.

REGISTERED PROFESSIONAL LAND SURVEYOR

*Robert D. Baggett*  
ROBERT D. BAGGETT  
JULY 12, 1983  
598

I do hereby certify that this is a true and exact copy of the original plat "JOHN DAY PLAZA ADDITION" as surveyed, subdivided and plotted.  
*Robert D. Baggett*  
BAGGETT - GRIFFITH - FERGUSON

I do hereby certify that this is a true and exact copy of the original plat "JOHN DAY PLAZA ADDITION" as filed with this office.  
*John Liveira*  
GRANT COUNTY CLERK

RECEIVED AND FILED  
JUL 19 1972  
JOHN LIVEIRA, County Clerk