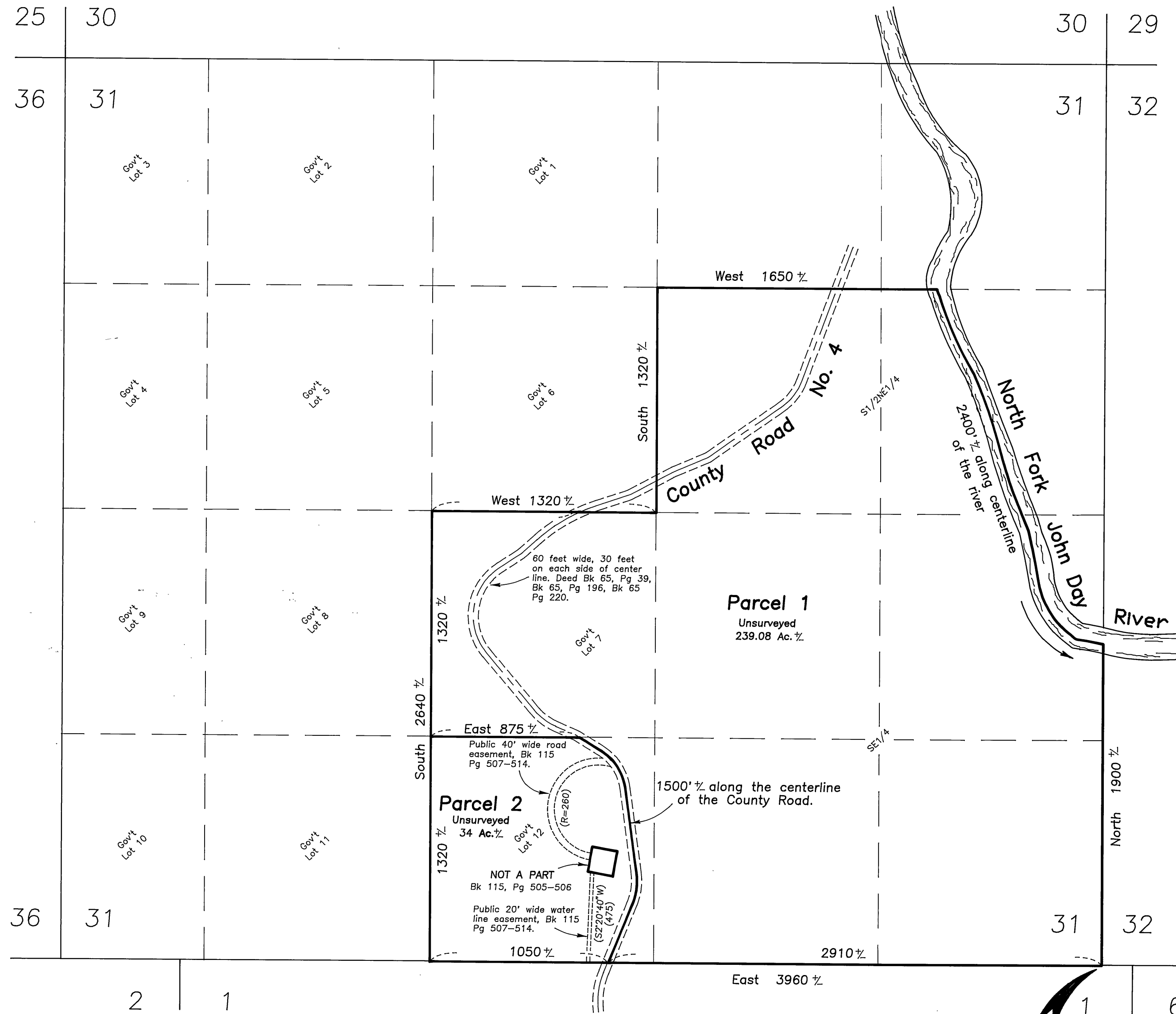
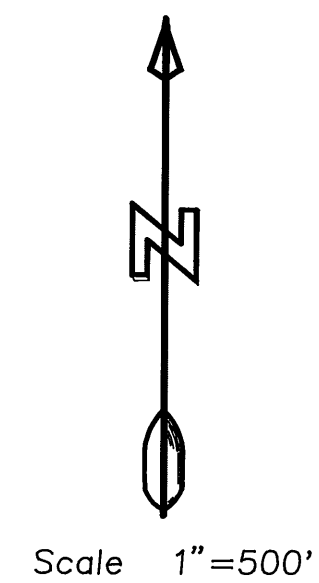


T8S R28E

LAND PARTITION PLAT NO. 99-09

SITUATED IN THE NE1/4, AND SE1/4, AND IN
GOV'T LOTS 7 AND 12, SECTION 31
T8S, R28E, W.M.
GRANT COUNTY, OREGON

August 8, 1998



NOTES:

- 1) The section and section subdivisional lines shown are for informational purposes only.
- 2) The location of the river and the County Road are shown in their approximate locations.
- 2) The high water line and the 100 year flood hazard along the North Fork of the John Day River have not been determined.
- 3) The area of this partition is taken from the Grant County Assessor's records, and may vary when the lines of these parcels are determined by survey.

Initial Point

