

See Sheet 2

LAND PARTITION PLAT NO. 96-24

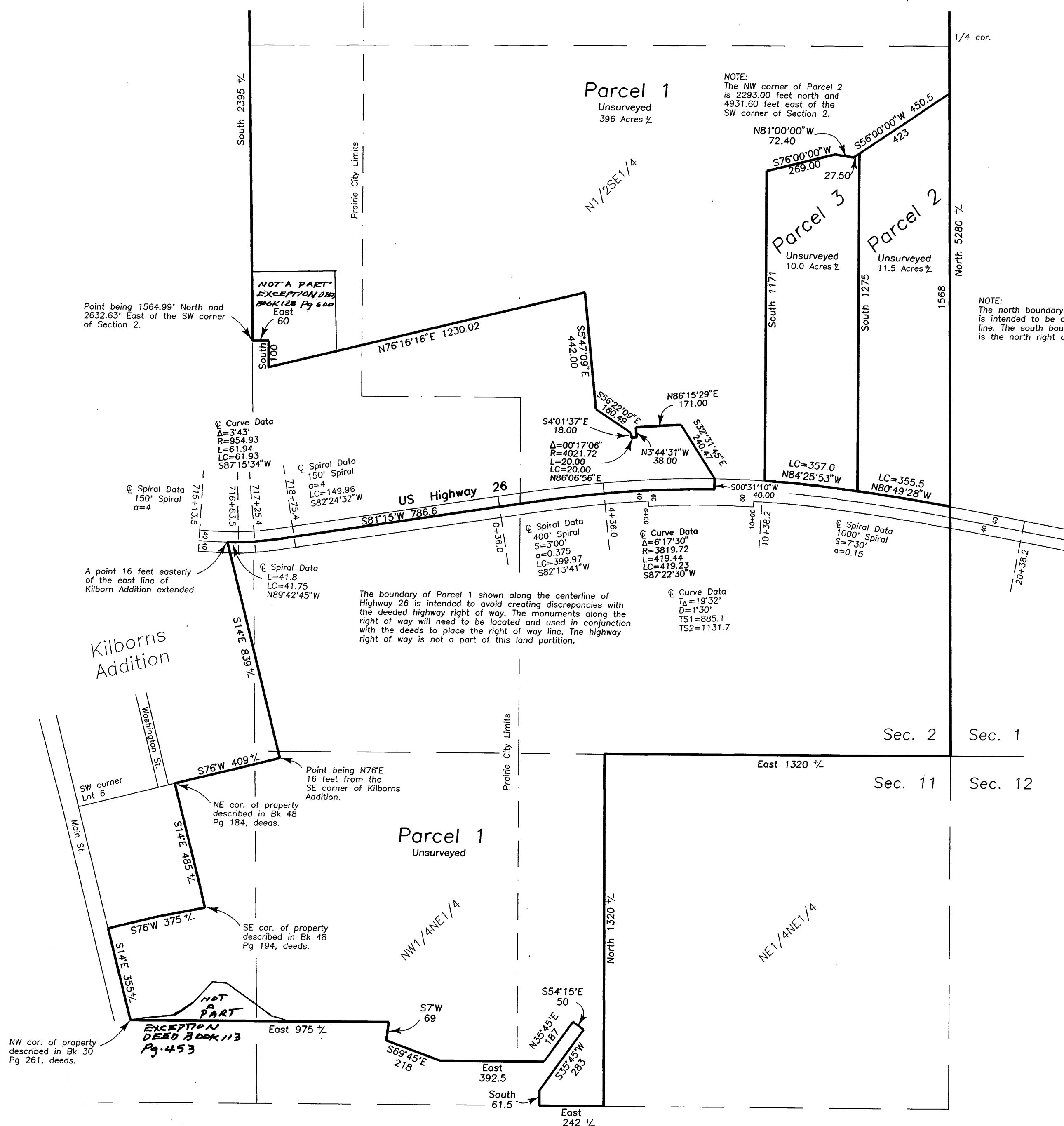
Situated in the SE1/4SE1/4 of Section 35, T12S, R33E,
and in Gov't Lots 1, 2 and 3 and in the S1/2NE1/4
and in the SE1/4 of Section 2 and in the NE1/4 and NW1/4
of Section 11, T13S, R33E, W.M.

City of Prairie City
GRANT COUNTY, OR.

December 4, 1996



Scale 1"=300'



REGISTERED
PROFESSIONAL
LAND SURVEYOR
Jack L. Watson
OREGON
SEPT 19, 1995
JACK L. WATSON
2734
Renewal Date 6/30/98