

LAND PARTITION PLAT NO. 2021 08
A PARTITION OF PARCEL 1, LAND PARTITION NO. 2000-16
AND OTHER LANDS
SITUATED IN THE SW1/4 AND THE NW1/4 SECTION 1
T9S, R27E, W.M.
TOWN OF MONUMENT
GRANT COUNTY, OREGON

May 12, 2021
Sheet 4 of 7

CENTERLINE DATA 30' WIDE PRIVATE ACCESS AND UTILITY EASEMENT		
Course	Bearing	Distance
L18	N25°00'23"E	225.00
L19	N15°00'00"E	350.00

30' wide private access
and utility easement
see declaration.

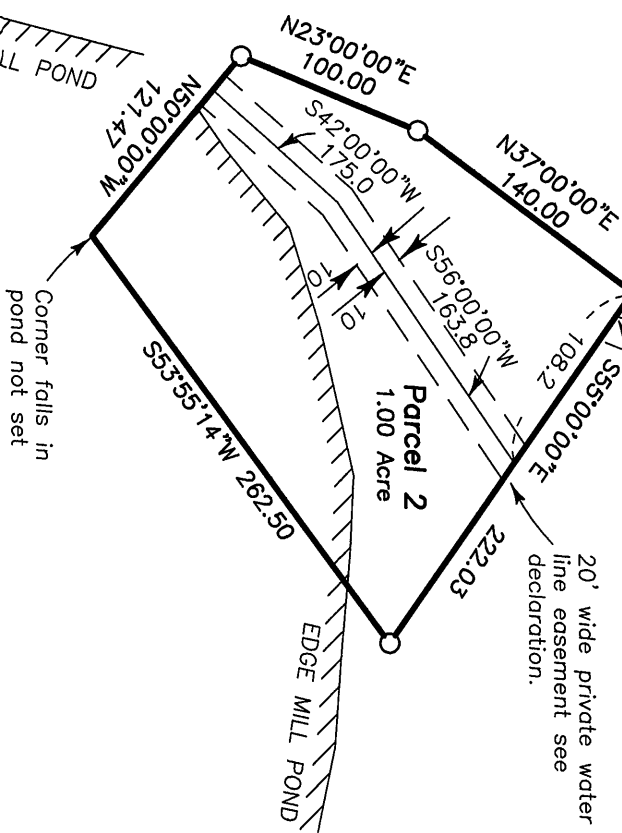
Sec. 2
2154
1/4 Cor.
Sec. 1

Parcel 1

Point being 368.35 South
and 2575.49 West of the
C1/4 corner of Sec. 1
Centerline of easement
is S55°00'00"E, 15.00
from property corner

20' wide private water
line easement see
declaration.

Between Pins
6(S04°15'27"E 894.30)
5(S04°15'27"E 894.30)
To the Centerline of the River
S04°15'27"E 1030.7
11(South 850.7)



Parcel 1
80.74 Acres

Scale 1"=100'



LEGEND

- Found 2 1/2" Grant County Surveyor brass cap monument.
- Found 5/8" iron pin with attached red plastic cap, unless otherwise shown.
- Found 5/8" iron pin with attached 2" alum. cap.
- Set 5/8" X 30" iron pin with attached red plastic cap marked CORNERSTONE SURVEYING, INC. number shown in box.
- Found monument, see record map of survey number shown in box.
- () GLO record bearing and distance.
- 1() Survey No. 669 record bearing and distance.
- 2() Survey No. 1079 record bearing and distance.
- 3() Survey No. 1849 record bearing and distance.
- 4() Survey No. 1858 record bearing and distance.
- 5() Survey No. 2055 record bearing and distance.
- 6() Survey No. 2154 record bearing and distance.
- 7() Survey No. 2159 record bearing and distance.
- 8() Partition No. 96-02 record bearing and distance.
- 9() Partition No. 98-06 record bearing and distance.
- 10() Partition No. 98-24 record bearing and distance.
- 11() Partition No. 2000-16 record bearing and distance.
- 12() Partition No. 2009-11 record bearing and distance.
- 13() Deed Bk 92, Pg 448 record bearing and distance.
- 14() Deed Bk 49, Pg 191 record bearing and distance.
- 15() Inst. No. 931271 record bearing and distance.
- 16() Inst. No. 20211073 record bearing and distance.
- 17() Inst. No. 20082785 record bearing and distance.
- 18() Highway Drawing No. 6B-20-5

REGISTERED
PROFESSIONAL
LAND SURVEYOR
JACK L. WATSON
SEPT. 19, 1995
2734
OREGON
Renewal Date 6/30/2022

I do hereby certify that this is a true and exact
copy of original Land Partition plat.
Jack Watson, PLS