

LAND PARTITION PLAT NO. 2017-01

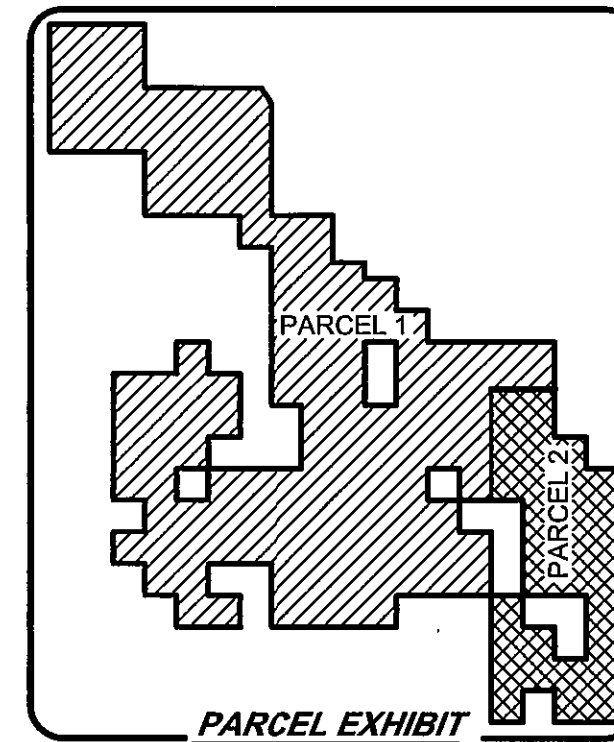
BEING A PARTITION OF:
A PORTION OF PARCEL 2 OF LAND PARTITION PLAT 2012-07,
AND OTHER LANDS

BEING SITUATED IN
SECTIONS 6, 7, 8, 16, 17, 19, 20, 21, 22, 27, 28,
29, 30, 31, 32, 33, AND 34 T. 10 S., R. 27 E., W.M.,
AND
SECTIONS 1 & 12, T. 10 S., R. 26 E., W.M.
COUNTY OF GRANT, STATE OF OREGON

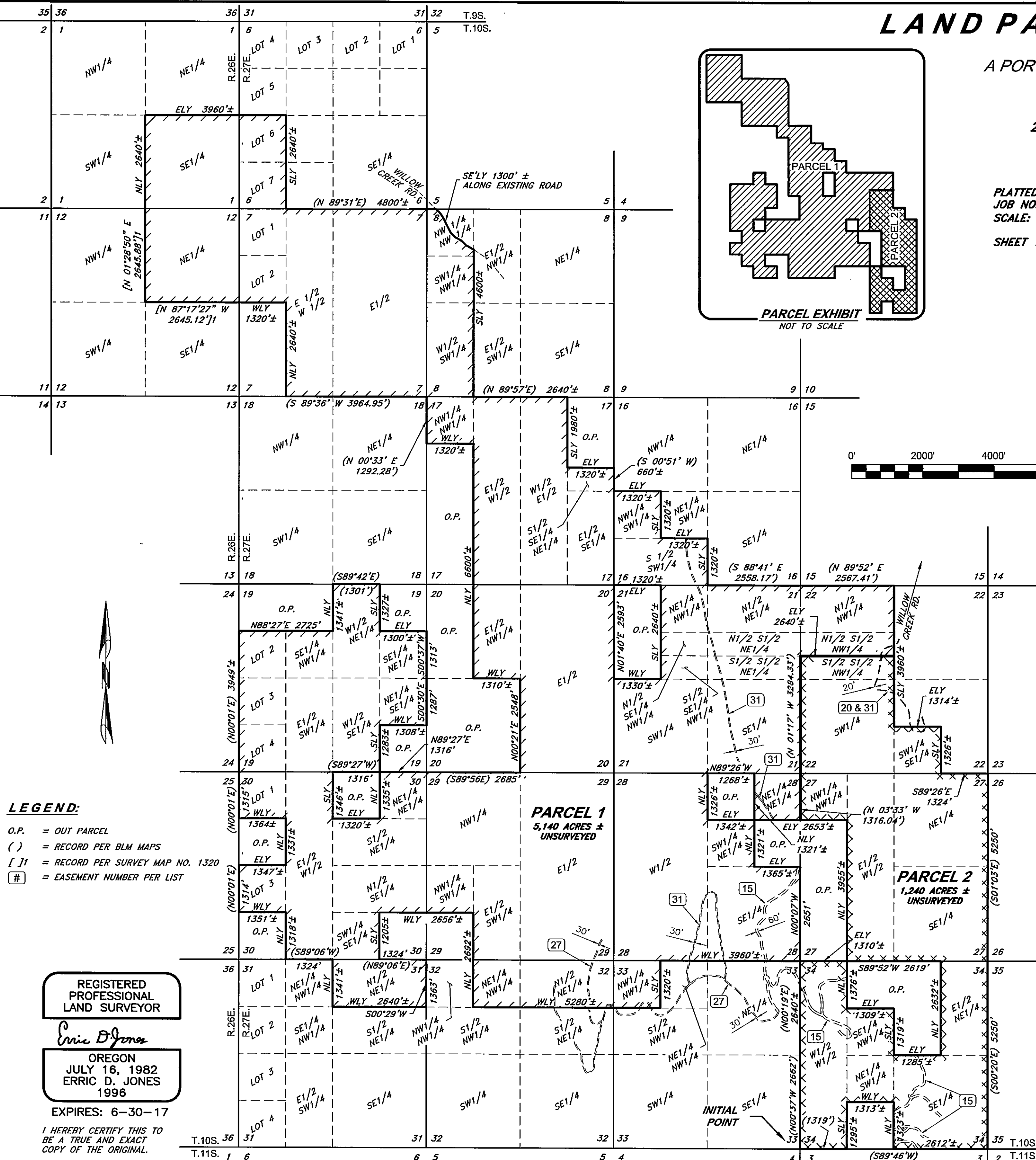
PLATTED: JANUARY 4, 2017
JOB NO.: 13874
SCALE: 1" = 2000'

BY: CHASE, JONES & ASSOCIATES, INC.
716 S.E. 11TH AVENUE
PORTLAND, OREGON
PHONE: 503-228-9844

SHEET 1 OF 2



PARCEL EXHIBIT
NOT TO SCALE



LEGEND:

- O.P. = OUT PARCEL
- () = RECORD PER BLM MAPS
- [] = RECORD PER SURVEY MAP NO. 1320
- # = EASEMENT NUMBER PER LIST

REGISTERED
PROFESSIONAL
LAND SURVEYOR

Eric D. Jones

OREGON
JULY 16, 1982
ERRIC D. JONES
1996

EXPIRES: 6-30-17

I HEREBY CERTIFY THIS TO
BE A TRUE AND EXACT
COPY OF THE ORIGINAL.

SUBJECT TO THE FOLLOWING EASEMENTS OR RESTRICTIONS:

6. RESERVATION CONTAINED IN PATENT TO CONRAD BELLENBROCK RECORDED MAY 12, 1923 IN BOOK 35 AT PAGE 38. NOT PLOTTED.
7. RESERVATION CONTAINED IN PATENT TO CLARENCE R. RICE RECORDED MAY 28, 1924 IN BOOK 35 AT PAGE 371. NOT PLOTTED.
8. RESERVATION CONTAINED IN PATENT TO WILLIAM H. SWICK RECORDED FEBRUARY 6, 1926 IN BOOK 36 AT PAGE 293. NOT PLOTTED.
9. RESERVATION CONTAINED IN PATENT TO LYMAN D. SWICK RECORDED MARCH 2, 1926 IN BOOK 36 AT PAGE 320. NOT PLOTTED.
10. RESERVATION CONTAINED IN PATENT TO HARVE H. MERRILL RECORDED MARCH 3, 1930 IN BOOK 38 AT PAGE 402. NOT PLOTTED.
11. RESERVATION CONTAINED IN PATENT TO HEIRS OF L. DEWEY SWICK RECORDED JUNE 10, 1946 IN BOOK 48 AT PAGE 489. NOT PLOTTED.
12. EASEMENT, FOR A ROAD GRANTED TO UNITED STATES OF AMERICA RECORDED MARCH 1, 1957 IN BOOK 76 AT PAGE 438. (NO SPECIFIED WIDTH). NOT PLOTTED.
13. EASEMENT, FOR ROADS GRANTED TO HUDSPETH PINE, INC., AN OREGON CORPORATION RECORDED DECEMBER 11, 1963 IN BOOK 89 AT PAGE 637. (PRIVATE, 40' WIDE). NOT PLOTTED.
14. EASEMENT, FOR A ROAD GRANTED TO SOPHIE LEASY, A SINGLE WOMAN RECORDED FEBRUARY 27, 1968 IN BOOK 98 AT PAGE 317. (PRIVATE, 40' WIDE). NOT PLOTTED.
15. EASEMENT, FOR A ROADWAY GRANTED TO UNITED STATES OF AMERICA RECORDED JUNE 18, 1971 IN BOOK 106 AT PAGE 129. (60' WIDE). APPROXIMATE LOCATION PLOTTED.
16. AGREEMENT REGARDING RIGHT OF WAY BETWEEN DONOVER CO., INC AND KINZUA CORPORATION ET AL AND UNITED STATES OF AMERICA, RECORDED OCTOBER 28, 1975 IN BOOK 113 AT PAGE 751. NOT PLOTTED.
- 16.1. ASSIGNMENT RECORDED APRIL 18, 1994 AS INSTRUMENT NUMBER 940752.
- 16.2. AMENDMENT RECORDED SEPTEMBER 3, 2003 AS INSTRUMENT NUMBER 032659.
17. EASEMENT FOR ROAD GRANTED TO UNITED STATES OF AMERICA RECORDED AUGUST 9, 1993 AS INSTRUMENT NUMBER 931810. NOT PLOTTED.
- 17.1. ASSIGNED BY INSTRUMENT NUMBER 940752 RECORDED APRIL 18, 1994.
- 17.2. ASSIGNED BY INSTRUMENT NUMBER 20101964 RECORDED OCTOBER 7, 2010.
- 17.3. ASSIGNED BY INSTRUMENT NUMBER 20121462 RECORDED JULY 24, 2012.
- 17.4. ASSIGNED BY INSTRUMENT NUMBER 20150017 RECORDED JANUARY 5, 2015.
- 17.5. ASSIGNED BY INSTRUMENT NUMBER 20150492 RECORDED MARCH 10, 2015.
- 17.6. ASSIGNED BY INSTRUMENT NUMBER 20150660 RECORDED APRIL 3, 2015.
- 17.7. ASSIGNED BY INSTRUMENT NUMBER 20150661 RECORDED APRIL 3, 2015.
18. RESERVATIONS AND RIGHTS CONTAINED IN PATENT TO RUDIO MOUNTAIN LIMITED PARTNERSHIP, RECORDED FEBRUARY 5, 2001. NOT PLOTTED.
19. FENCE AGREEMENT RECORDED OCTOBER 5, 2005 AS INSTRUMENT NUMBER 20052666. NOT PLOTTED.
20. RECIPROCAL EASEMENTS, BETWEEN MONUMENT GRAZING ASSOCIATION, AN OREGON COOPERATIVE CORPORATION, AKA MONUMENT GRAZING ASSOCIATION, AN OREGON ASSOCIATION AND RUDIO MTN. LIMITED PARTNERSHIP, AN OREGON LIMITED PARTNERSHIP AKA RUDIO MOUNTAIN LIMITED PARTNERSHIP RECORDED OCTOBER 5, 2005 AS INSTRUMENT NUMBER 20052667. (PRIVATE, APPROXIMATELY 20' WIDE). APPROXIMATE LOCATION PLOTTED.
21. EASEMENT AGREEMENT, BETWEEN WILDWOOD INVESTMENTS, INC. AN OREGON CORPORATION AND RUDIO MTN. LIMITED PARTNERSHIP, AN OREGON LIMITED PARTNERSHIP RECORDED OCTOBER 7, 2010 AS INSTRUMENT NUMBER 20101966. (PRIVATE, 40' WIDE). LOCATION SHOWN NOT WITHIN THIS LAND PARTITION PLAT. NOT PLOTTED.
- 21.1. EASEMENT MODIFICATION AGREEMENT, INCLUDING THE TERMS AND PROVISIONS THEREOF RECORDED JULY 24, 2012 AS INSTRUMENT NUMBER 20121460.
22. RESERVATION OF EASEMENT, FOR INGRESS AND EGRESS BETWEEN RUDIO MOUNTAIN LIMITED PARTNERSHIP, AN OREGON LIMITED PARTNERSHIP, RECORDED JUNE 27, 2012 AS INSTRUMENT NUMBER 20121285. (PRIVATE, NO SPECIFIED WIDTH). NOT PLOTTED.
23. ANY MATTERS DISCLOSED ON LAND PARTITION PLAT NO. 2012-07 FILED JUNE 29, 2012.
24. EASEMENT AGREEMENT RECORDED JULY 24, 2012 AS INSTRUMENT NUMBER 20121459. (PRIVATE, 40' WIDE). LOCATION DESCRIBED (AND SHOWN) NOT WITHIN THIS LAND PARTITION PLAT. NOT PLOTTED.
25. SETTLEMENT AGREEMENT RECORDED JULY 25, 2012 AS INSTRUMENT NUMBER 20121481. NOT PLOTTED.
26. ASSIGNMENT RECORDED JANUARY 5, 2015 AS INSTRUMENT NUMBER 20150018. NOT PLOTTED.
27. RECIPROCAL ACCESS EASEMENT AGREEMENT BETWEEN CHINA PEAK RANCH, INC., AN OREGON CORPORATION AND WILDWOOD INVESTMENTS, INC., AN OREGON CORPORATION RECORDED APRIL 3, 2015 AS INSTRUMENT NUMBER 20150657. (PRIVATE, 30' WIDE). APPROXIMATE LOCATION PLOTTED.
28. ASSIGNMENT RESTRICTING GRAZING RECORDED APRIL 3, 2015 AS INSTRUMENT NUMBER 20150658. NOT PLOTTED.
29. ASSIGNMENT RECORDED APRIL 3, 2015 AS INSTRUMENT NUMBER 20150662. NOT PLOTTED.
30. LOGGING EASEMENT BETWEEN CHINA PEAK RANCH, INC., AN OREGON CORPORATION, AND WILDWOOD INVESTMENTS, INC., AN OREGON CORPORATION RECORDED SEPTEMBER 29, 2015 AS INSTRUMENT NUMBER 20152159. (PRIVATE, 30' WIDE). LOCATION SHOWN NOT WITHIN THIS LAND PARTITION PLAT. NOT PLOTTED.
31. LOGGING EASEMENT BETWEEN CHINA PEAK RANCH, INC., AN OREGON CORPORATION, AND WILDWOOD INVESTMENTS, INC., AN OREGON CORPORATION RECORDED SEPTEMBER 29, 2015 AS INSTRUMENT NUMBER 20152160. (PRIVATE, 30' WIDE). APPROXIMATE LOCATION PLOTTED.