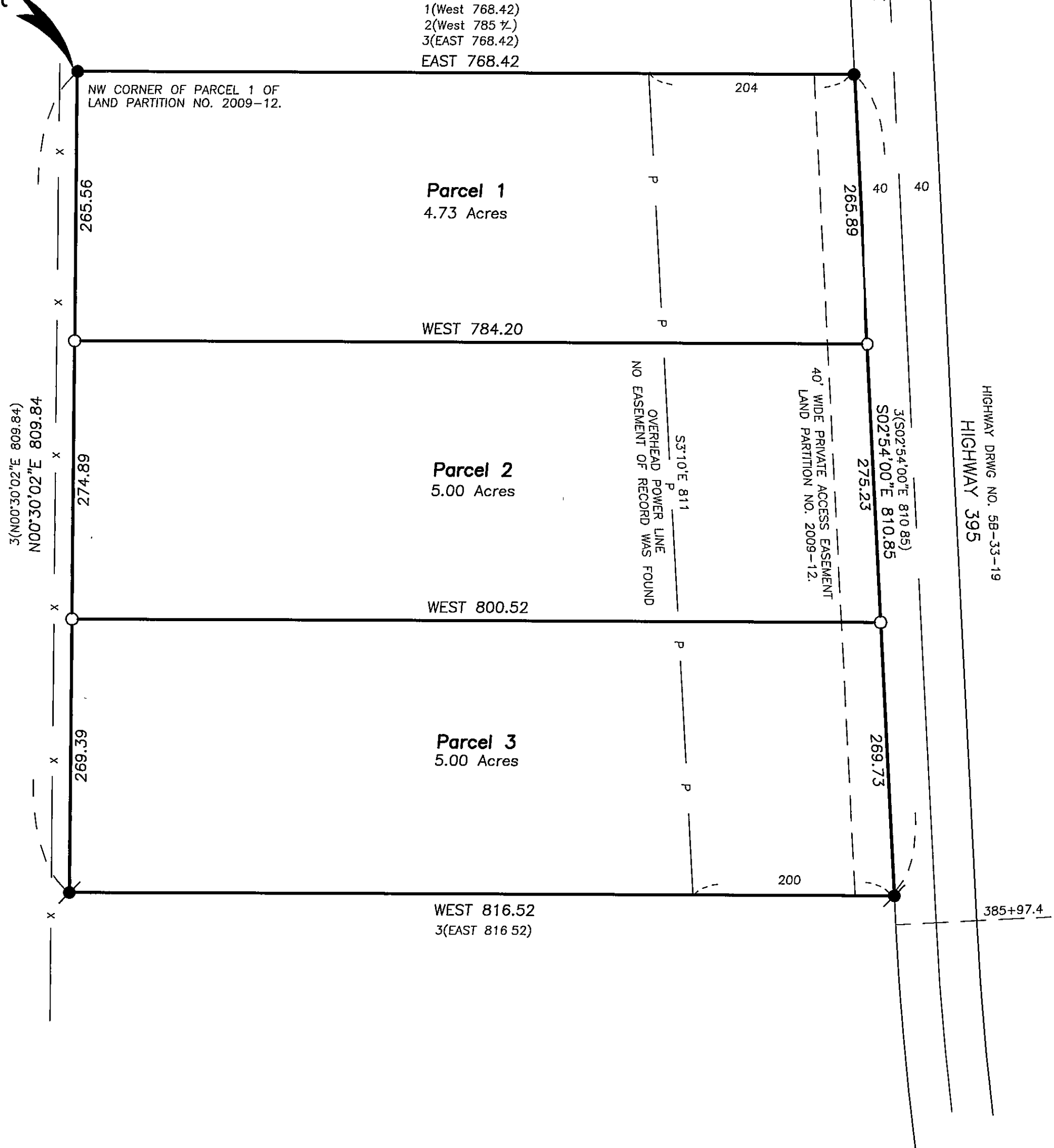


LAND PARTITION PLAT NO. 2012-06

PARTITION OF PARCEL 1 OF LAND PARTITION NO. 2009-12  
SITUATED IN THE NE1/4 OF SECTION 32,  
T7S, R31E, W.M.  
GRANT COUNTY, OREGON

MAY 8, 2012  
Sheet 1 of 2

Initial  
Point



Scale 1"=100'

**BASIS OF BEARINGS**

Survey No. 1838

**LEGEND**

- Found 5/8" iron pin with attached red plastic cap marked Cornerstone Surveying Inc., see Land Partition Plat No. 2009-12.
- Found 5/8" iron pin with attached red plastic cap marked Cornerstone Surveying Inc., see Survey No. 1838
- Set 5/8"x30" iron pin with attached red plastic cap marked CORNERSTONE SURVEYING, INC.
- x—x Fence Line
- 1( ) Survey No. 1838 record bearing and distance.
- 2( ) Land Partition No. 2007-08 record bearing and distance.
- 3( ) Land Partition No. 2009-12 record bearing and distance.
- 4( ) Highway Drawing No. 5B-33-19 record bearing and distance.

I do hereby certify that this is a true and exact  
copy of the original land partition plat.

*Jack L. Watson*  
Jack L. Watson

REGISTERED  
PROFESSIONAL  
LAND SURVEYOR

*Jack L. Watson*

OREGON  
SEPT. 19, 1995  
JACK L. WATSON  
2734

Renewal Date 6/30/2012