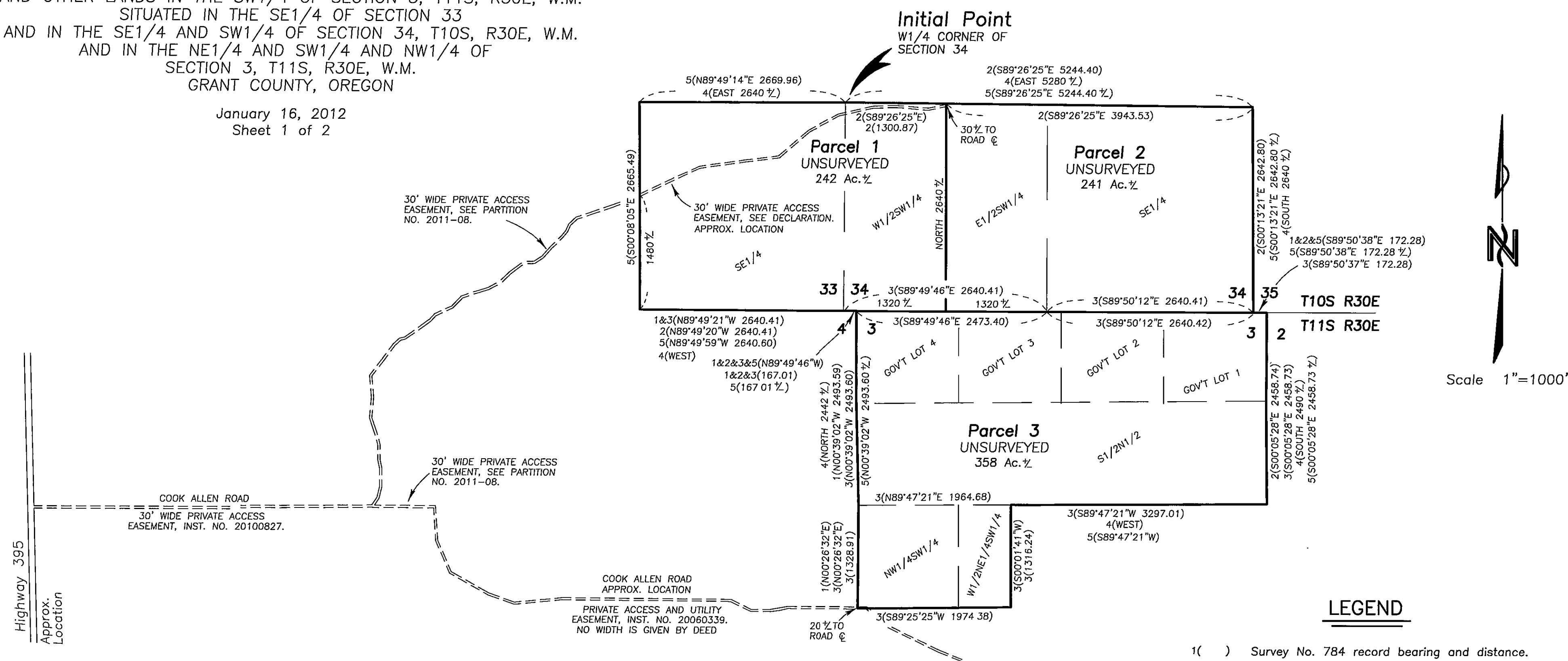


LAND PARTITION PLAT NO. 2012-02

A PARTITION OF PARCEL 3, LAND PARTITION PLAT NO. 2011-08
AND OTHER LANDS IN THE SW1/4 OF SECTION 3, T11S, R30E, W.M.
SITUATED IN THE SE1/4 OF SECTION 33
AND IN THE SE1/4 AND SW1/4 OF SECTION 34, T10S, R30E, W.M.
AND IN THE NE1/4 AND SW1/4 AND NW1/4 OF
SECTION 3, T11S, R30E, W.M.
GRANT COUNTY, OREGON

January 16, 2012
Sheet 1 of 2



NOTES:
1) The section lines and subdivision of section lines are protracted and the parcel dimensions are approximate. The actual boundary dimensions will conform to the description given in the Surveyor's Certificate.
2) The access roads have not been located by survey, the locations are approximate.

I do hereby certify that this is a true and exact copy of the original land partition plat.
Jack L. Watson
Jack L. Watson, PLS

REGISTERED
PROFESSIONAL
LAND SURVEYOR
Jack L. Watson
OREGON
SEPT 19, 1995
JACK L. WATSON
2734
Renewal Date 6/30/2012

RECEIVED AND FILED
GRANT COUNTY SURVEYOR
FEB 22 2012
BY: *[Signature]*

LEGEND

1() Survey No. 784 record bearing and distance.
2() Survey No. 913 record bearing and distance.
3() Survey No. 934 record bearing and distance.
4() Partition Plat No. 2010-04 record bearing and distance.
5() Partition Plat No. 2011-08 record bearing and distance.

NARRATIVE

This partition was performed at the request of Philip Wirth, on behalf of Fox Hills Farm, LLC. The purpose of this partition map is to partition the property described in Grant County Deed Inst. No. 20112504 into three parcels. No survey was conducted for this partition process.

A boundary adjustment was done to include the NW1/4SW1/4 and the W1/2NE1/4SW1/4 of Section 3 into Parcel 3, of Land Partition No. 2011-08, which is recorded in the office of the Grant County Clerk.