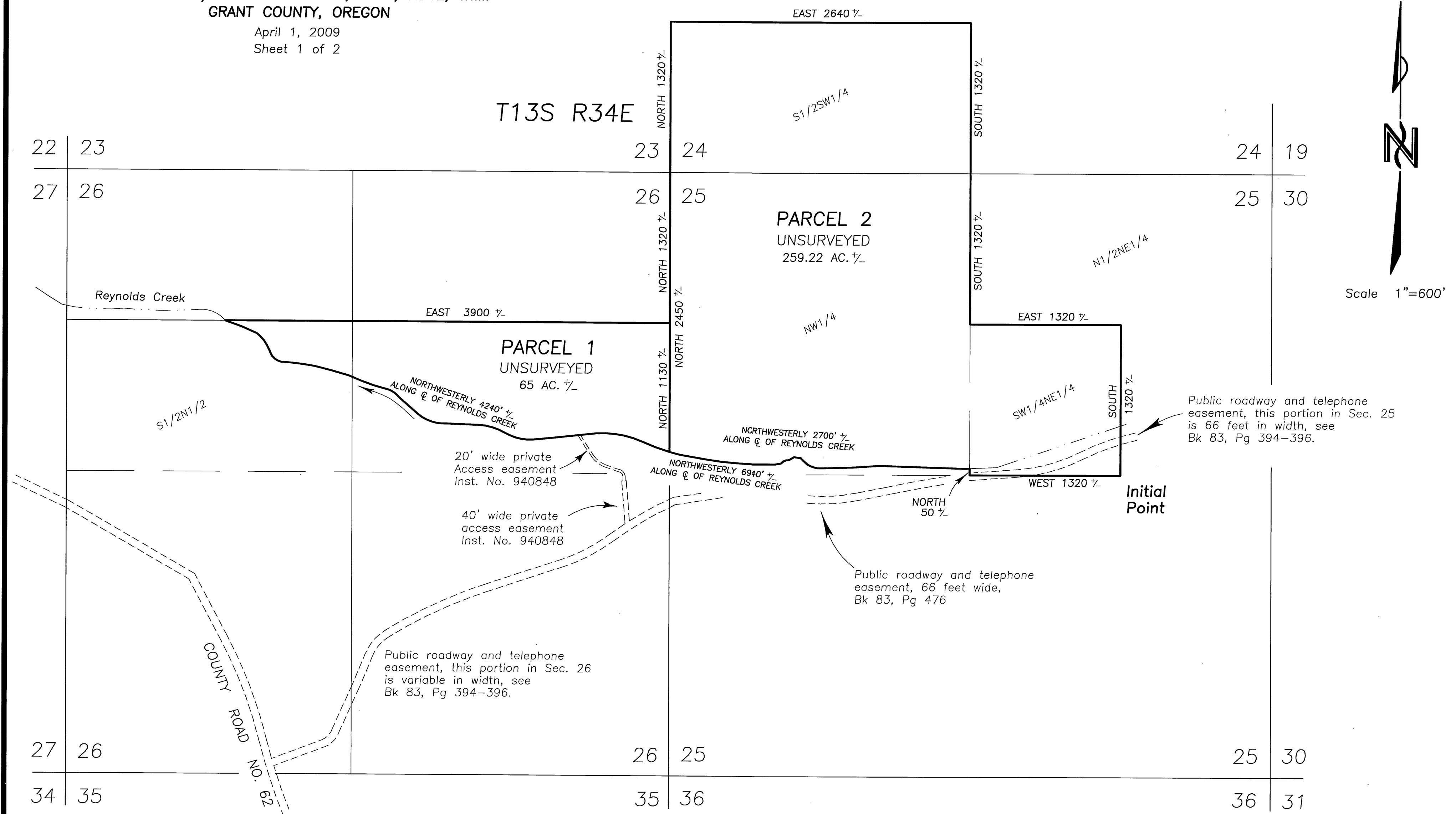


LAND PARTITION PLAT NO. 2609-03

A PARTITION OF PARCEL 1, LAND PARTITION NO. 2003-5
SITUATED IN THE SW1/4 SECTION 24 AND THE N1/2 OF SECTION 25
AND THE N1/2 OF SECTION 26, T13S, R34E, W.M.
GRANT COUNTY, OREGON

April 1, 2009
Sheet 1 of 2



NOTES:

- 1) The high water line and the 100 year flood hazard along Reynolds Creek has not been determined.
- 2) The area for this partition is taken from the Grant County Assessor's records, and may vary when the lines of these parcels are determined by survey.
- 3) The section lines and subdivision of section lines are protracted and shown for informational purposes only.
- 4) The roads and Reynolds Creek are shown in their approximate locations.

I do hereby certify that this is a true and exact copy of the original Land Partition plat.

Jack L. Watson
Jack L. Watson

REGISTERED
PROFESSIONAL
LAND SURVEYOR

Jack L. Watson
OREGON
SEPT 19, 1995
JACK L. WATSON
2734

Renewal Date 6/30/2010