

LAND PARTITION PLAT NO. 2006-26

SITUATED IN THE NW1/4SE1/4 SECTION 26,  
T.13S., R.31E., W.M.,  
GRANT COUNTY, OREGON  
NOVEMBER 13, 2006

### LEGEND

- FOUND 2½" ALUMINUM PIPE AND CAP  
FROM RECORD SURVEY NO. 1690
- SET 5/8"x30" IRON PIN WITH ATTACHED YELLOW  
PLASTIC CAP MARKED BGG SURVEY MARKER
- RECORD BEARING AND DISTANCE FROM  
INSTRUMENT NO. 951284

## REFERENCES

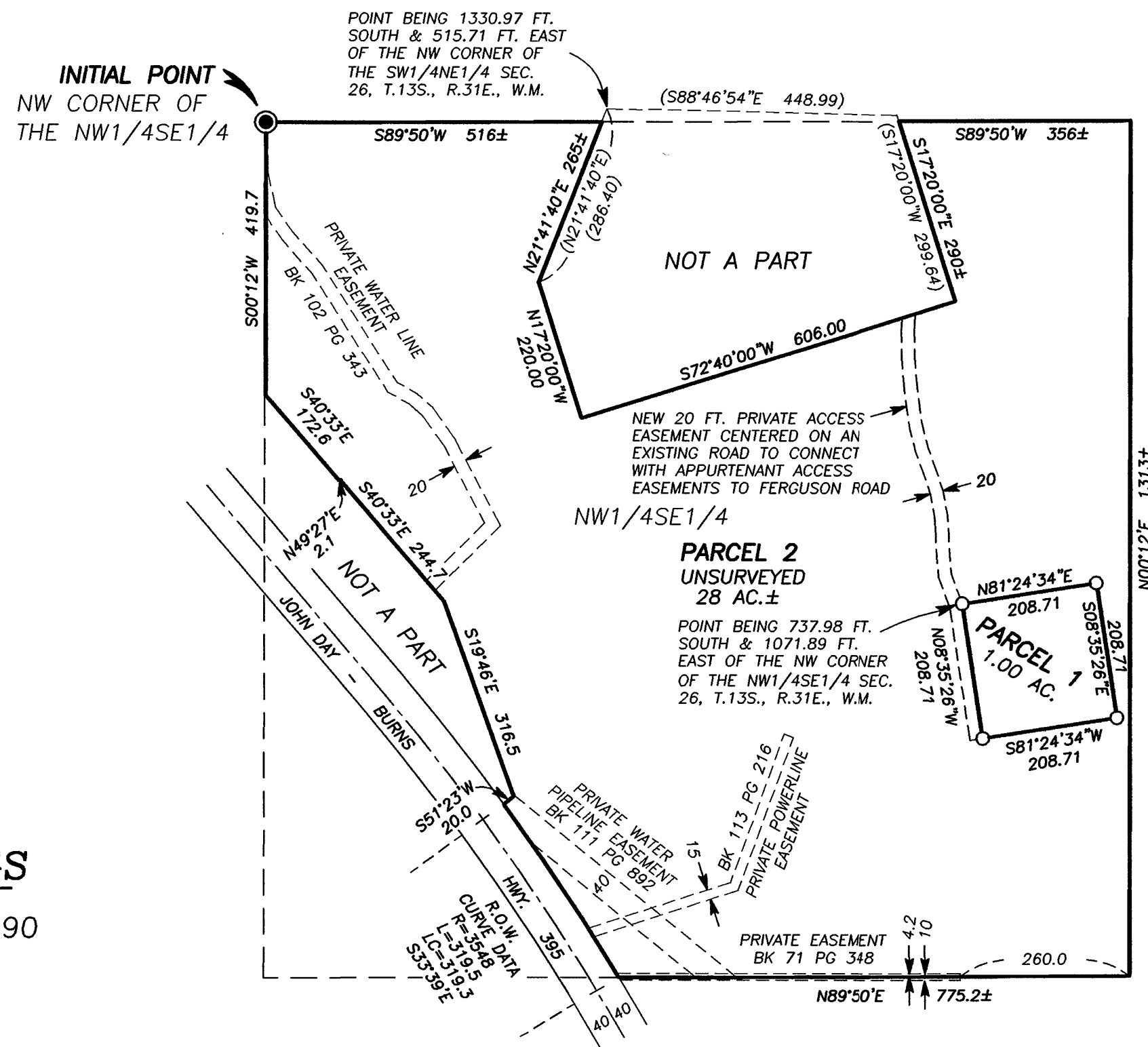
RECORD MAP OF SURVEY NO. 1690  
DEED RECORD INSTRUMENT NO.'S 951283 & 951284  
PRELIMINARY TITLE REPORT ORDER NO. 19926

**NOTES:**

1. THE SECTION SUBDIVISION LINES SHOWN ARE PROTRACTED FOR GENERAL INFORMATION ONLY.
2. THE LOCATIONS OF HIGHWAY NO. 395, ALL OTHER ROADS AND ROAD EASEMENTS ARE APPROXIMATE.
3. ALL UNSURVEYED BEARINGS AND DISTANCES ARE APPROXIMATE.
4. THE UNSURVEYED LINES AND AREAS MAPPED HEREON MAY CHANGE UPON EXECUTION OF AN ACTUAL SURVEY.

## BASIS OF BEARINGS

RECORD MAP OF SURVEY 1690  
SEE NARRATIVE  
**SCALE: 1"=200'**



REGISTERED  
PROFESSIONAL  
LAND SURVEYOR

*Robert D. Bagett*  
OREGON  
JULY 12, 1963  
ROBERT D. BAGETT  
598  
Renewal Date 12/31/07

I DO HEREBY CERTIFY THAT THIS IS A TRUE AND EXACT  
COPY OF LAND PARTITION PLAT NO. 2006-26  
Robert D Baggett  
BAGETT-GRIFFITH AND BLACKMAN