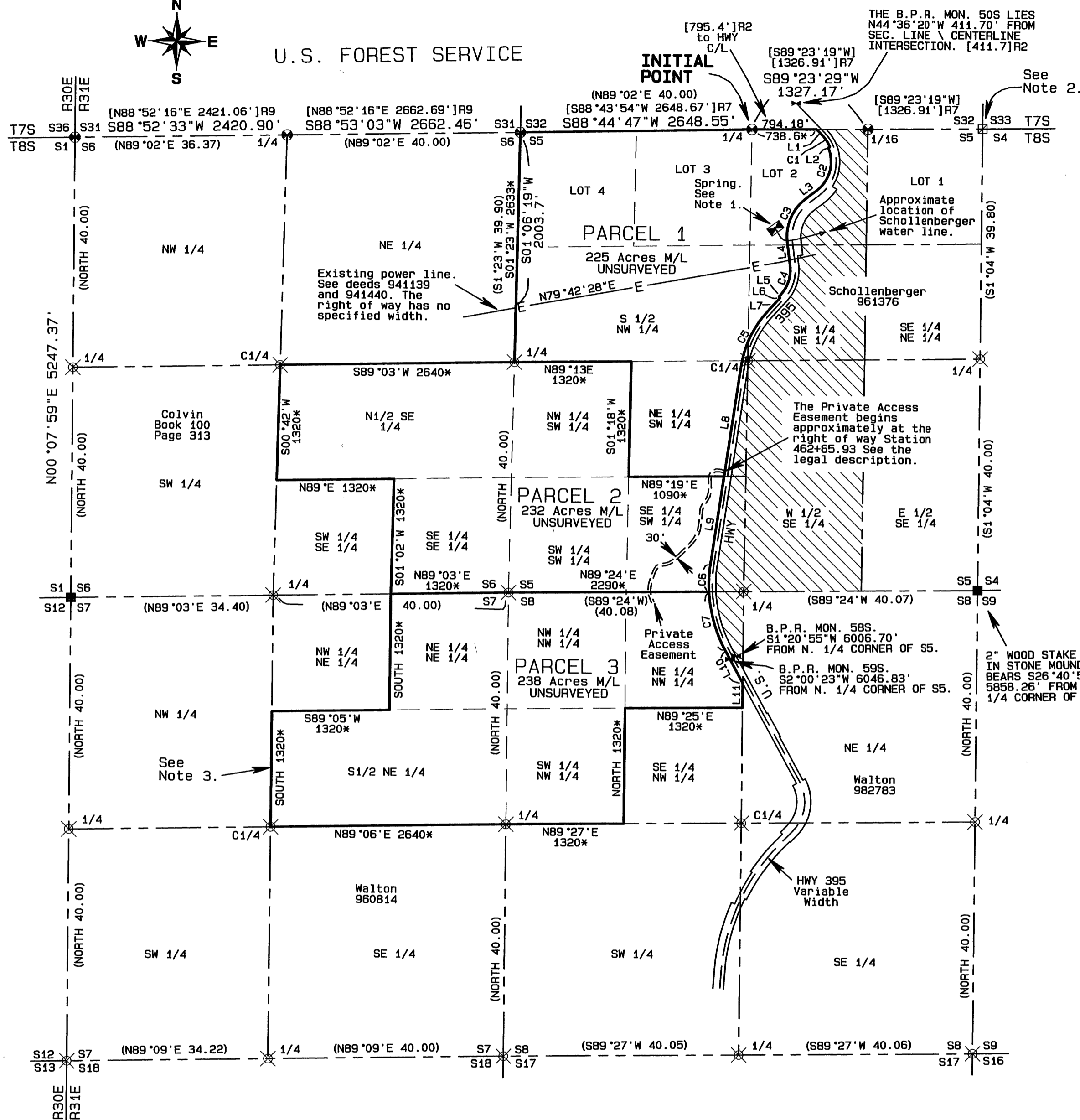


U.S. FOREST SERVICE



LAND PARTITION PLAT

NO. 2005 - 19

LEGEND

- FOUND THE BRASS OR ALUMINUM MONUMENT OF RECORD
- FOUND THE STONE MOUNDS AS IDENTIFIED IN U.S.F.S. CORNER RECORDS T8S, R31E, E5 AND E9
- FOUND 3" BRASS CAP IN CONCRETE POST SET BY U.S. B.P.R., 1934
- BRASS CAP VISITED BUT NOT SURVEYED TO
- COMPUTED POSITION ONLY NOT SEARCHED OR SET
- THOSE PORTIONS OF ALIQUOT PARTS FROM THE LEGAL DESCRIPTION THAT ARE NOT A PART OF THIS PARTITION
- N. 1320' APPROXIMATE PARCEL DIMENSIONS IN FEET
- (XX) GLO RECORD MEASUREMENT IN CHAINS
- [XX]R1 RECORD MEASUREMENT FROM SURVEY INDICATED
- R1 GLO CONTRACT #380 APPROVED NOVEMBER 23, 1881 BY F. W. CAMPBELL
- R2 U.S. BUREAU OF PUBLIC ROADS CONSTRUCTION MAP, 1934 FILED AT ODOT REGIONAL OFFICE IN LAGRANDE, OREGON.
- R3 ODOT R/W MAP No. 58-33-19, 1941
- R4 ODOT MAP 1R-3-1640, 1994
- R5 COUNTY SURVEY 300, BAGETT
- R6 COUNTY SURVEY 645, FERGUSON
- R7 COUNTY SURVEY 649, BISHOP
- R8 COUNTY SURVEY 905, GAYLORD
- R9 COUNTY SURVEY 952, MUNRO
- R10 COUNTY SURVEY 1287, BAGETT
- R11 COUNTY SURVEY 1706, WELLS
- R12 COUNTY SURVEY 1707, FERGUSON

CURVE TABLE

The data in the table below are approximate only and were calculated based on record information from the US BPR construction map.

CURVE No.	ARC LENGTH	RADIUS	DELTA	CHORD BEARING	CHORD LENGTH
C1	167.94'	437.48'	21°59'43"	S33°36'29"E	166.91'
C2	550.04'	417.48'	75°29'17"	S15°08'01"W	511.11'
C3	563.74'	537.59'	60°05'00"	S22°50'10"W	538.27'
C4	360.49'	417.40'	49°29'00"	S17°32'10"W	349.39'
C5	700.06'	1186.12'	33°49'00"	S25°22'10"W	689.95'
C6	318.83'	1567.90'	11°39'04"	S02°38'08"W	318.28'
C7	698.23'	1567.90'	25°30'56"	S15°56'52"E	692.48'

LINE TABLE

The data in the table below are approximate only and were calculated based on record GLO information and record data from the US BPR construction map.

LINE No.	BEARING	DISTANCE
L1	S44°36'20"E	89.03'
L2	S67°23'23"W	20.00'
L3	S52°52'40"W	151.20'
L4	S07°12'20"E	269.90'
L5	S42°16'40"W	30.00'
L6	S47°43'20"E	20.00'
L7	S42°16'40"W	219.00'
L8	S08°27'40"W	1266.68'
L9	S08°27'40"W	1011.22'
L10	S28°42'20"E	422.98'
L11	N00°00'00"W	278.10'

NOTES

Note 1. This spring has been developed and is being used as the domestic water source for the Schollenberger home on the east side of the highway. The existence of a second water line providing stock water from another source has been confirmed. These water systems are covered by the water agreement and easement recorded October 14, 2005 as Grant County Document No. 200527330. The easement has no specified width and affects only Parcel 1 of this partition plat.

Note 2. I visited this corner monument and found it in good condition but was only able to obtain an approximate GPS measurement due to the timber in the area. Only the record measurements to that corner are shown on this plat.

Note 3. The fence lines around this property appear to approximate the correct shape of the boundary except along the west line in Sections 6 and 7. In those areas the current fence line follows a convenience route which straightens the use arrangement along that side. There are remains of old fence lines which show that at some time in the past the fences used to more closely approximate the deed lines.

DEED REFERENCES

Book 40 Page 190
Book 100 Page 313
Book 137 Page 912
Instrument No. 941439
Instrument No. 941440
Instrument No. 950297
Instrument No. 960814
Instrument No. 961376
Instrument No. 982256
Instrument No. 982763
Instrument No. 042548
Instrument No. 042549
Instrument No. 0527330

BASIS OF BEARINGS

The bearings are based on the line from the N. 1/4 corner to the N.W. corner of Section 5. The bearings shown are true and were obtained by rotating the grid values obtained from GPS observations 1°03'00" clockwise.

REGISTERED
PROFESSIONAL
LAND SURVEYOR

Stephen K. Haddock

OREGON
JULY 9, 2001
STEPHEN K. HADDOCK
56295LS
RENEWS 6-30-07

Stephen K. Haddock
This is a true and exact copy.

PARTITION PLAT FOR
McDougal-King, LLC
P.O. Box 518
Creswell, OR 97426

LOCATION: Sections 5, 6, 7 & 8, T8S, R31E,
W.M., Grant County, Oregon.

PROJECT DATE: June 28, 2005.

SHEET 1 of 2

Project No. 2005-03

SCALE: 1" = 1000'

WITNESS TREE SURVEYING

Stephen K. Haddock, PLS
P.O. Box G
Pilot Rock, Oregon 97868
(541) 443-2922

I do hereby certify that this plat was received on the 24th day of October, 2005, at 9:10 o'clock A.M. and recorded as Land Partition Plat No. 2005-19 of Grant County Records.

Kathy McLean
GRANT COUNTY CLERK