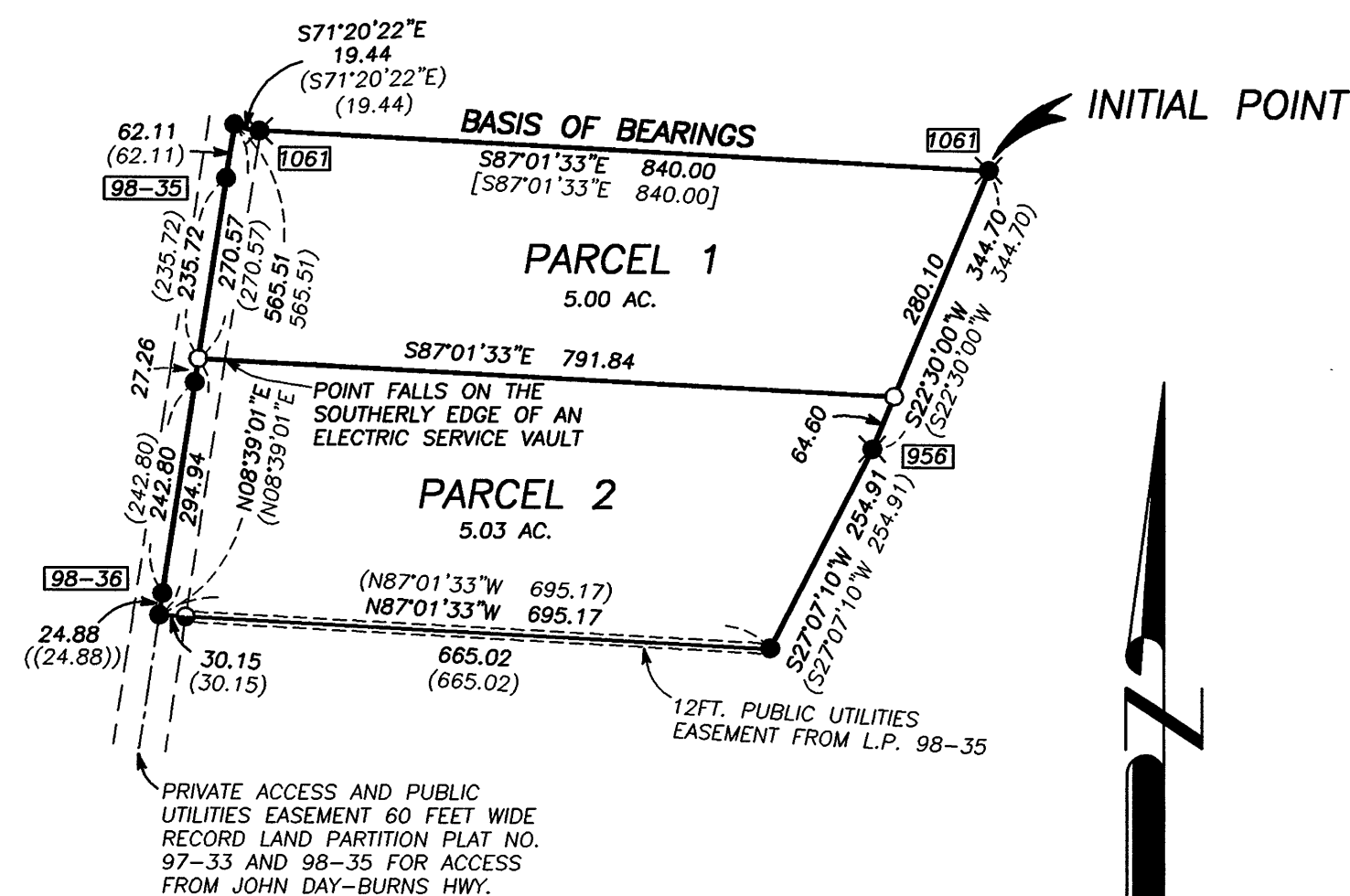


JULY 8, 2004



- FOUND 5/8" IRON PIN WITH ATTACHED YELLOW PLASTIC CAP MARKED BGB SURVEY MARKER FROM RECORD LAND PARTITION PLAT NO. 97-33 UNLESS OTHERWISE NOTED
- FOUND 5/8" IRON PIN WITH NO CAP SET IN LAND PARTITION PLAT NO. 97-33
- ✱ FOUND 5/8" IRON PIN WITH ATTACHED YELLOW PLASTIC CAP MARKED BGA SURVEY MARKER
- SET 5/8"x30" IRON PIN WITH ATTACHED YELLOW PLASTIC CAP MARKED BGB SURVEY MARKER
- ( ) RECORD BEARING AND DISTANCE FROM LAND PARTITION PLAT NO'S 97-33 AND 98-35
- [ ] RECORD BEARING AND DISTANCE FROM RECORD MAP OF SURVEY NO. 1061
- (( )) RECORD BEARING AND DISTANCE FROM LAND PARTITION PLAT NO 98-36

**SCALE: 1"=200'**

THE EXTERIOR BOUNDARY OF THIS LAND PARTITION WAS DETERMINED IN LAND PARTITION NO. 98-35 WHICH I SURVEYED IN JULY 1998. THESE MONUMENTS ARE BASICALLY STILL IN POSITION, ALTHOUGH WE FOUND THREE OF THEM BENT AND SLIGHTLY DISTURBED. WE RESET THEM TO THEIR ORIGINAL POSITION. WE SET IRON PINS ON THE DIVISION LINE BETWEEN PARCELS 1 AND 2 AT LOCATIONS APPROVED BY MR. JOHNSON, AS SHOWN HEREON.

7. EASEMENTS, RIGHTS OF WAY AND RESERVATIONS AS THE SAME MAY EXIST OR APPEAR OF RECORD.



July 22, 2004  
OFFICE OF COUNTY SURVEYOR

ATTEST: Kathy McManon

DEED RECORD BOOK	41	PAGE	590
	51		99
	88		148
	95		432
	134		677-679

I DO HEREBY CERTIFY THAT THIS IS A TRUE AND EXACT  
COPY OF LAND PARTITION PLAT NO. 2004-12  
Robert D. Baggett  
BAGETT-GRIFFITH AND BLACKMAN

*Jerry L. Johnson*  
JERRY L. JOHNSON

*Kimberly Gatterman*  
NOTARY PUBLIC FOR OREGON *Washington*  
MY COMMISSION EXPIRES *Sept 4, 2004*

