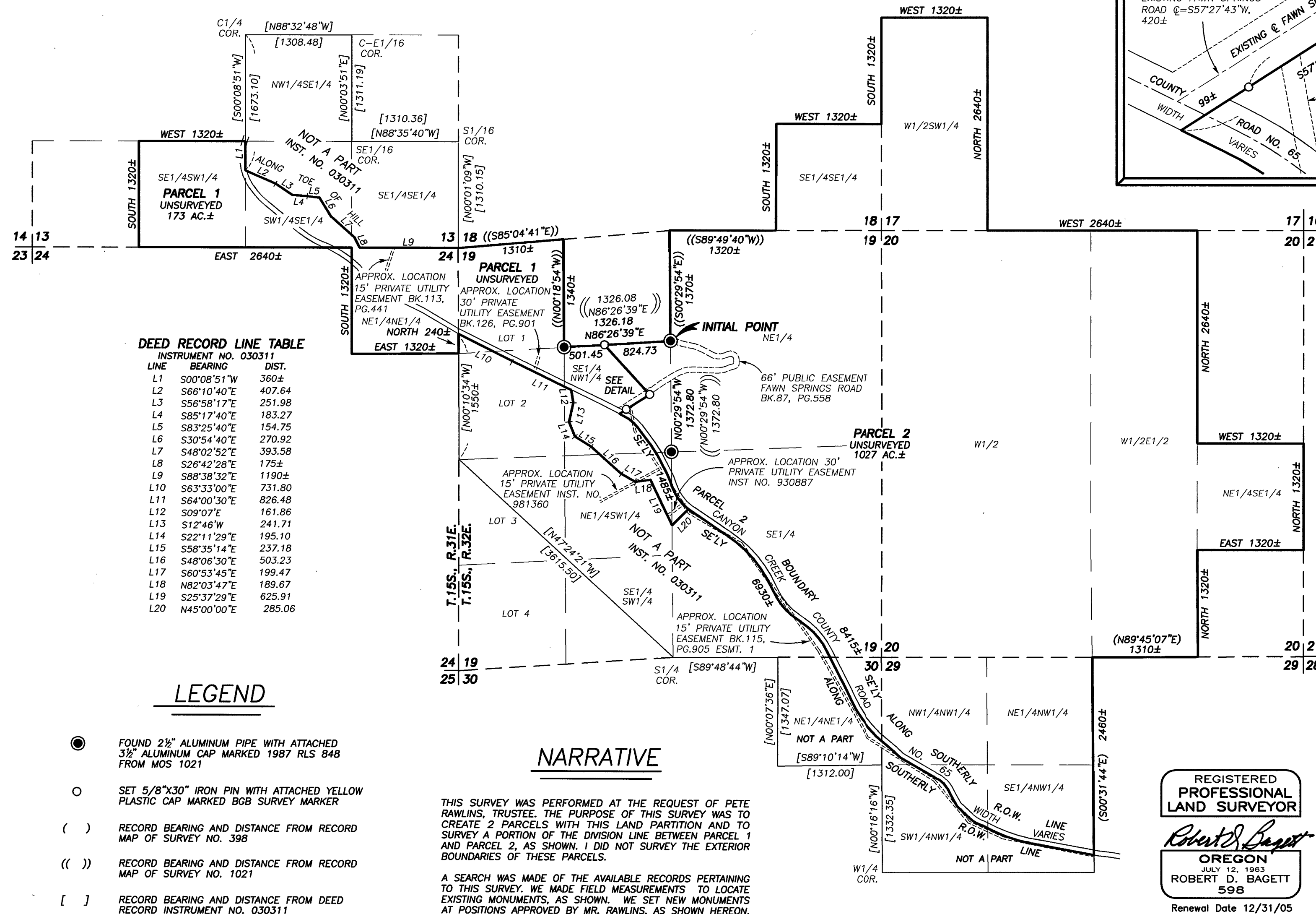


LAND PARTITION PLAT NO. 2004-04

SITUATED IN T.15S., R.31E., W.M.: THE SE1/4 AND THE SE1/4SW1/4 SEC. 13 AND IN THE NE1/4NE1/4 SEC. 24; T.15S., R.32E., W.M.: THE W1/2SW1/4 SEC. 17, THE SE1/4SE1/4 SEC. 18, THE NE1/4, SE1/4, SW1/4 AND NW1/4 SEC. 19, THE NE1/4, SE1/4, SW1/4 AND NW1/4 SEC. 20, THE NW1/4 SEC. 29 AND THE NE1/4NE1/4 SEC. 30;
GRANT COUNTY, OREGON

APRIL 23, 2004

DETAIL
SCALE: 1"=100'



CORRECTIONS MADE JAN. 12, 2005 AS PER AFFIDAVIT OF CORRECTION FILED AS INSTRUMENT NO. 20050096, DEED RECORDS.
Robert D. Bagett
GRANT COUNTY SURVEYOR

BASIS OF BEARINGS

RECORD MAP OF SURVEY NO. 1021
BETWEEN FOUND MONUMENTS AT THE
C1/4 AND CN1/16 CORNERS SEC. 19
SCALE: 1" = 1000'

- NOTES:**
1. THE UNSURVEYED SECTION AND SECTION SUBDIVISIONAL LINES SHOWN ARE PROTRACTED FOR GENERAL INFORMATION ONLY.
 2. THE LOCATIONS OF CANYON CREEK COUNTY ROAD NO. 65, UNSURVEYED ROADS AND EASEMENTS ARE APPROXIMATE.
 3. THE AREAS, UNSURVEYED BEARINGS AND DISTANCES ARE APPROXIMATE.
 4. WITH THE EXCEPTION OF THE SURVEYED DIVISION LINE BETWEEN PARCELS 1 AND 2, THE LINES AND AREAS MAPPED HEREON MAY CHANGE UPON EXECUTION OF AN ACTUAL SURVEY.