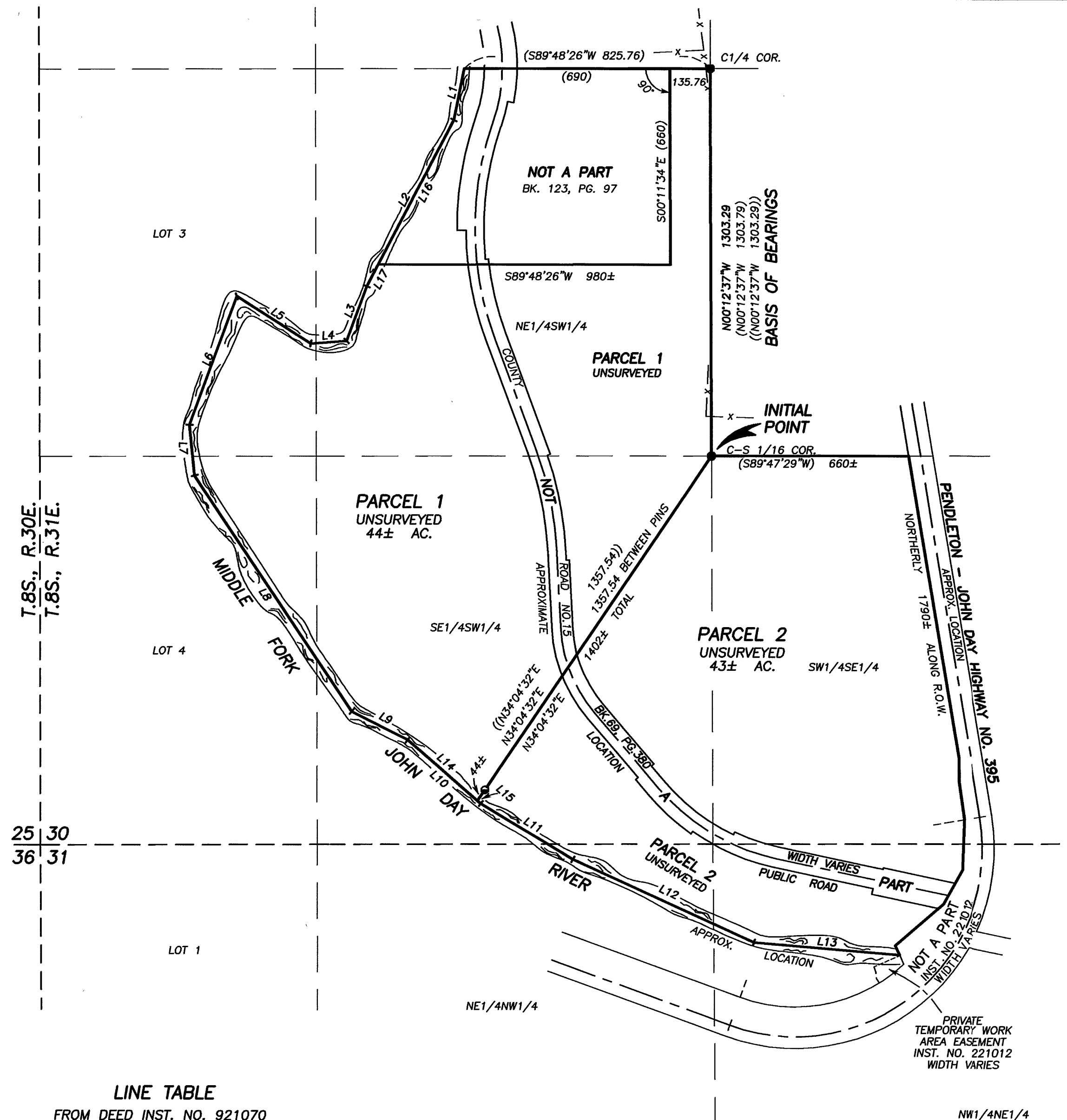


LAND PARTITION PLAT NO. 2003 11

SITUATED IN THE SW1/4SE1/4 AND THE SW1/4 SEC. 30 AND
THE NE1/4NW1/4 AND NW1/4NE1/4 SEC. 31,
T.8S., R.31E., W.M.,
GRANT COUNTY, OREGON

SEPTEMBER 12, 2003



BASIS OF BEARINGS

RECORD MAP OF SURVEY NO. 194
AS SHOWN

SCALE: 1" = 300'

REFERENCES

RECORD MAP OF SURVEY NO.'S 194 & 1654
DEED RECORD INSTRUMENT NO.'S 921070, 921081 & 221012
DEED RECORD BOOK 69 PAGE 380
123 PAGE 97
PRELIMINARY TITLE REPORT ORDER NO. 16924

LINE TABLE

FROM DEED INST. NO. 921070

LINE	BEARING	DIST.
L1	S11°35'W	177.0
L2	S27°30'W	632.0
L3	S20°10'W	197.0
L4	S86°00'W	120.0
L5	N57°18'36"W	295.08
L6	S20°05'33"W	462.42
L7	S06°00'E	170.0
L8	S33°40'E	951.99
L9	S63°00'E	210.0
L10	S49°10'E	325.0
L11	S59°00'E	360.0
L12	S65°30'E	670.0
L13	S85°10'E	299.34

CALCULATED LINES

L14	S49°10'E	310±
L15	S49°10'E	15±
L16	S27°30'W	550±
L17	S27°30'W	82±

LEGEND

- FOUND 5/8" IRON PIN WITH ATTACHED YELLOW PLASTIC CAP MARKED BGB SURVEY MARKER FROM MOS 1654
- FOUND 5/8" IRON PIN FROM MOS 194
- () RECORD BEARING AND DISTANCE FROM MOS 194
- (()) RECORD BEARING AND DISTANCE FROM MOS 1654
- X—X FENCE LINE

NOTES:

- THE SECTION AND SECTION SUBDIVISIONAL LINES SHOWN ARE PROTRACTED FOR GENERAL INFORMATION ONLY.
- THE LOCATIONS OF THE PENDLETON - JOHN DAY HIGHWAY NO. 395, COUNTY ROAD NO. 15 AND THE MIDDLE FORK OF THE JOHN DAY RIVER ARE APPROXIMATE.
- UNSURVEYED BEARINGS AND DISTANCES ARE OF RECORD OR APPROXIMATE.
- UNSURVEYED LINES AND THE AREAS MAPPED HEREON MAY CHANGE UPON EXECUTION OF AN ACTUAL SURVEY.

RECEIVED AND
FILED

Oct 1, 2003
OFFICE OF COUNTY SURVEYOR

Robert D. Baggett
ATTEST: *[Signature]*

REGISTERED
PROFESSIONAL
LAND SURVEYOR

Robert D. Baggett
OREGON
JULY 12, 1963
ROBERT D. BAGETT
598

Renewal Date 12/31/03