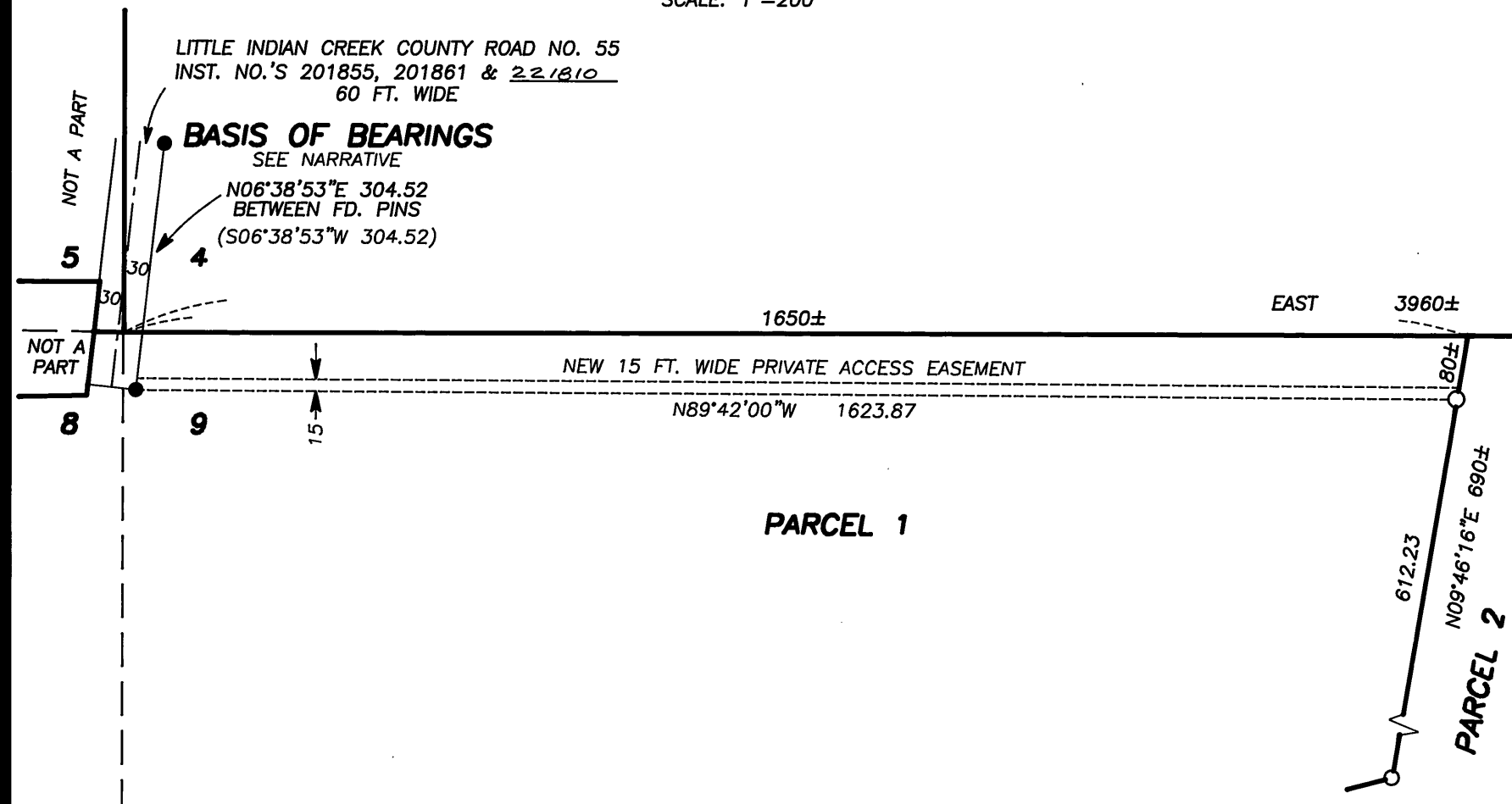


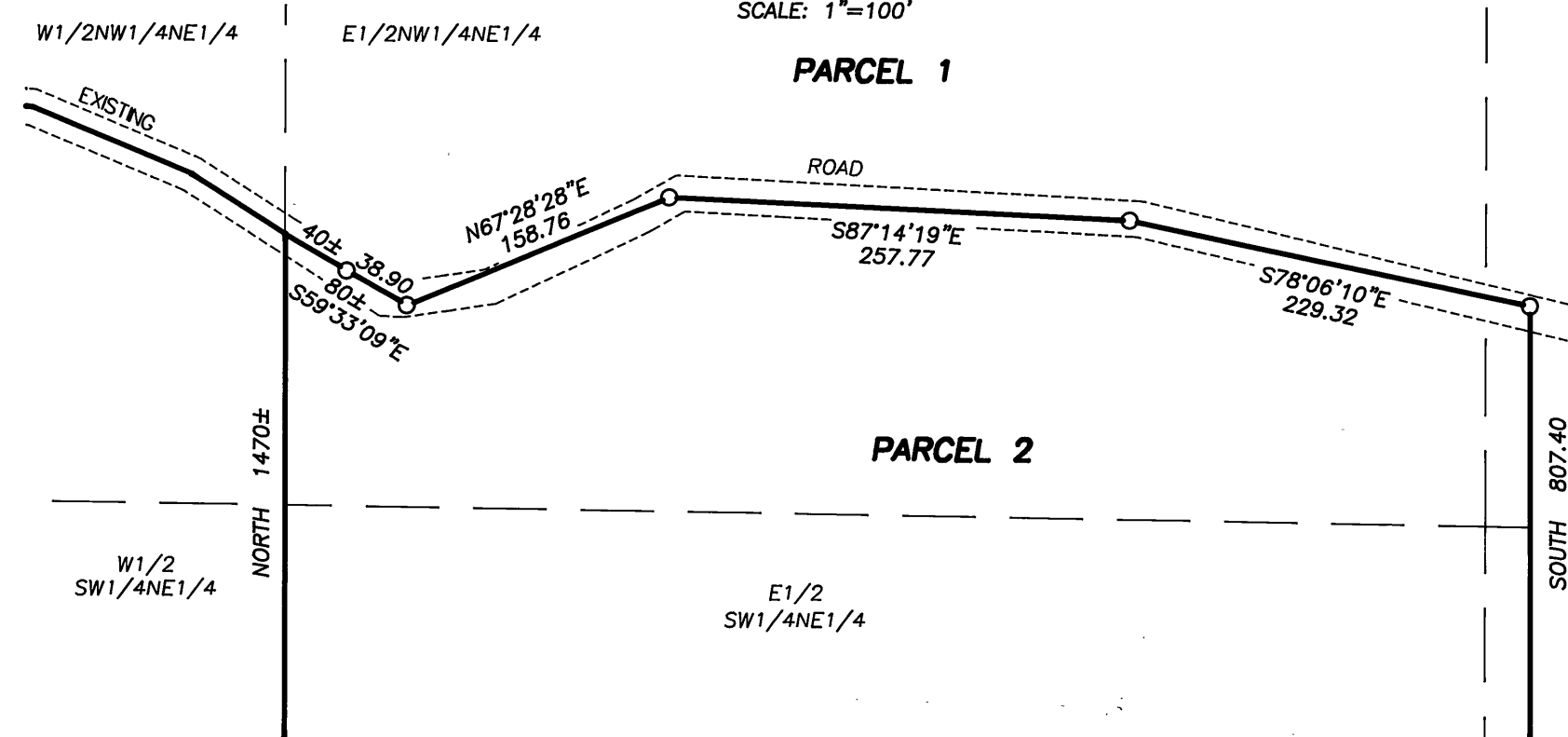
# LAND PARTITION PLAT NO. 2002-07

SITUATED IN THE SE1/4 SEC. 5, THE NE1/4 AND SE1/4 SEC. 8  
AND IN THE NE1/4 AND NW1/4 SEC. 9,  
T.14S., R.33E., W.M.,  
GRANT COUNTY, OREGON  
JUNE 13, 2002

**DETAIL "A"**  
SCALE: 1"=200'



**DETAIL "B"**  
SCALE: 1"=100'



## NOTES:

1. THE SECTION AND SECTION SUBDIVISIONAL LINES SHOWN ARE PROTRACTED FOR GENERAL INFORMATION ONLY.
2. ALL BEARINGS AND DISTANCES ARE APPROXIMATE.
3. THE LINES AND AREAS MAPPED HEREON MAY CHANGE UPON EXECUTION OF AN ACTUAL SURVEY, EXCEPT THE DIVISION LINE BETWEEN PARCELS 1 AND 2.

