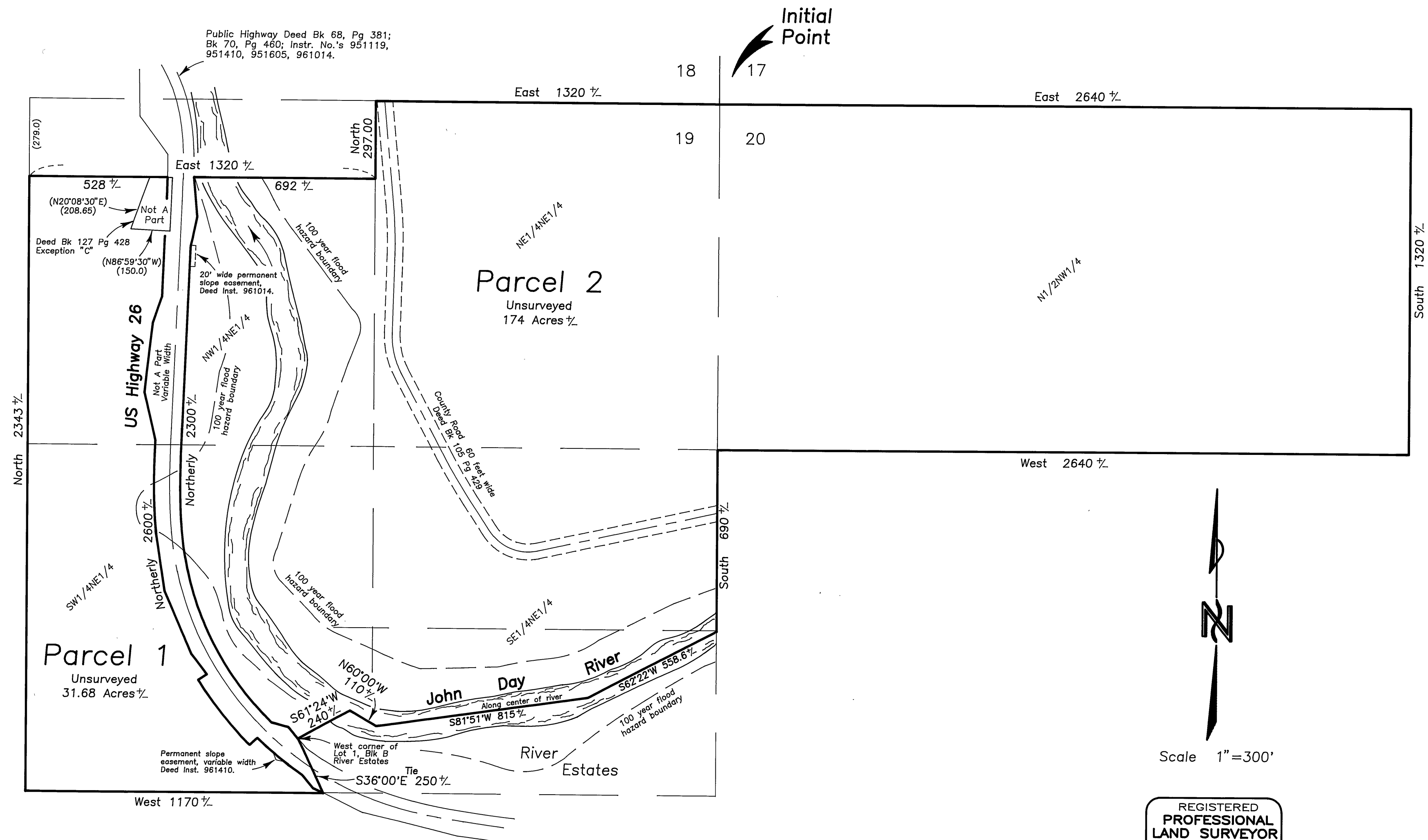


LAND PARTITION PLAT NO. 2000-5

Situated in the NE1/4 of Section 19 and in the
N1/2NW1/4 of Section 20, T13S, R29E, W.M.
Grant County, Oregon

March 1, 2000



NOTES:

- 1) The area for this partition is taken from the Grant County Assessor's records, and may vary when the lines of these parcels are determined by survey.
- 2) The section lines and subdivision of section lines are protracted and shown for informational purposes only.
- 3) The John Day River was not located and is shown in its approximate location.

REGISTERED
PROFESSIONAL
LAND SURVEYOR

[Signature]
OREGON
SEPT 19, 1995
JACK L. WATSON
2734
Renewal Date 6/30/2000