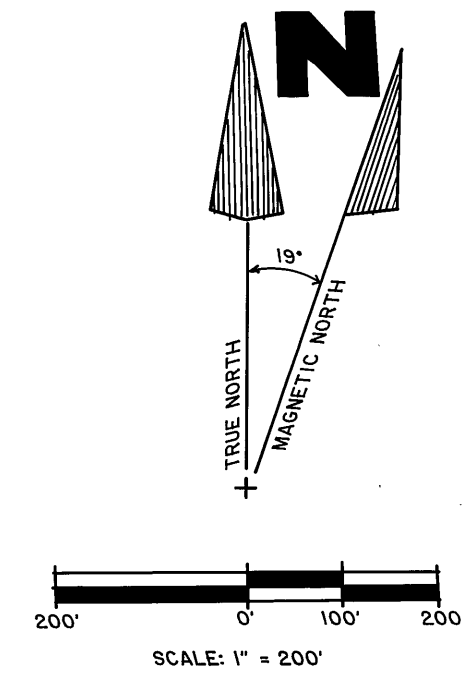
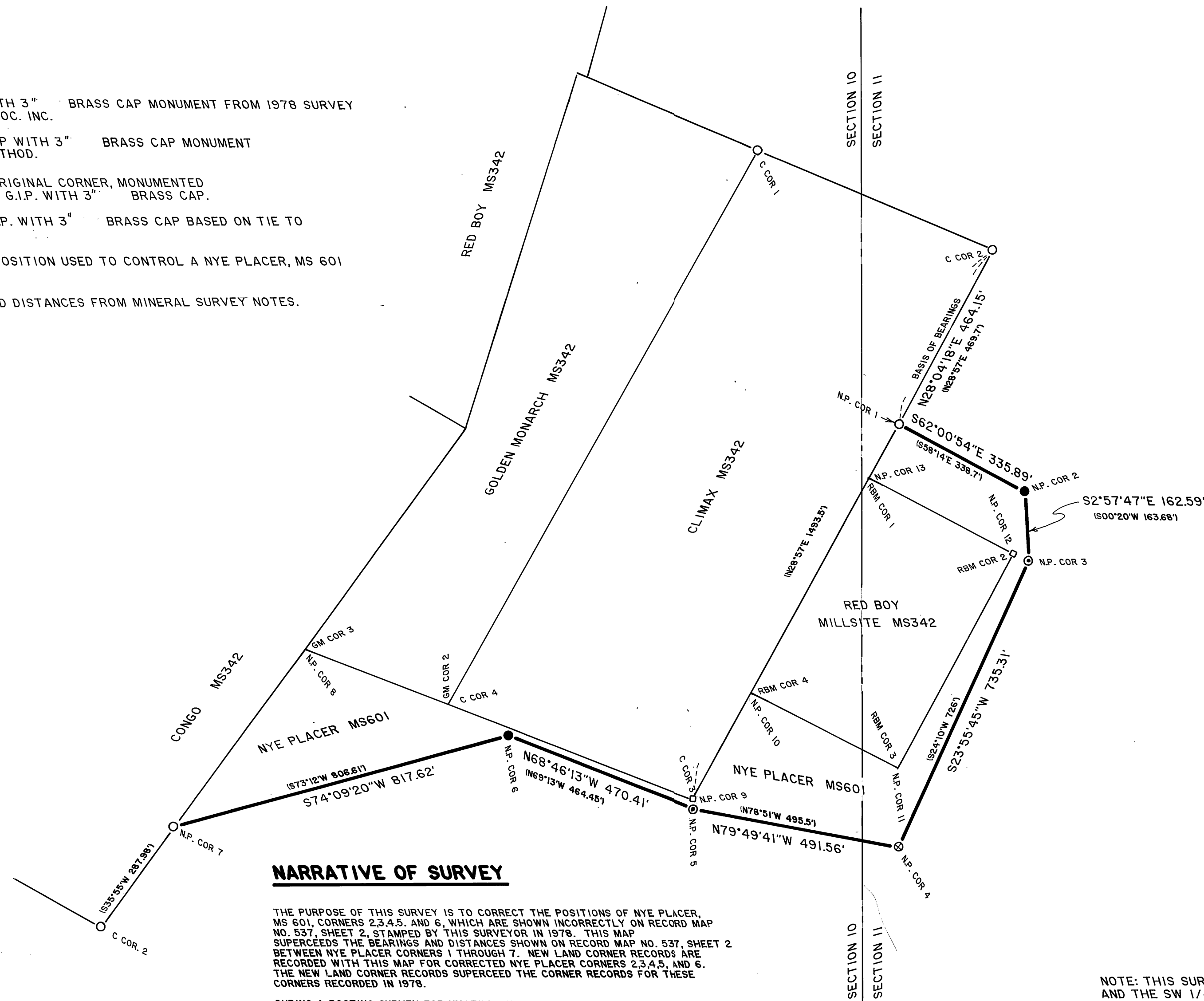


LEGEND

- - 2 1/2" BY 30" G.I.P. WITH 3" BRASS CAP MONUMENT FROM 1978 SURVEY BY WALLULIS AND ASSOC. INC.
- - SET 2 1/2" BY 30" G.I.P. WITH 3" BRASS CAP MONUMENT BY COMPASS RULE METHOD.
- ⊗ - FOUND EVIDENCE OF ORIGINAL CORNER, MONUMENTED WITH A 2 1/2" BY 30" G.I.P. WITH 3" BRASS CAP.
- ⊙ - SET 2 1/2" BY 30" G.I.P. WITH 3" BRASS CAP BASED ON TIE TO NEARBY CORNER.
- - RECOVERED CORNER POSITION USED TO CONTROL A NYE PLACER, MS 601 CORNER.
- (XOX) - RECORD BEARINGS AND DISTANCES FROM MINERAL SURVEY NOTES.



NARRATIVE OF SURVEY

THE PURPOSE OF THIS SURVEY IS TO CORRECT THE POSITIONS OF NYE PLACER, MS 601, CORNERS 2,3,4,5, AND 6, WHICH ARE SHOWN INCORRECTLY ON RECORD MAP NO. 537, SHEET 2, STAMPED BY THIS SURVEYOR IN 1978. THIS MAP SUPERCEDES THE BEARINGS AND DISTANCES SHOWN ON RECORD MAP NO. 537, SHEET 2 BETWEEN NYE PLACER CORNERS 1 THROUGH 7. NEW LAND CORNER RECORDS ARE RECORDED WITH THIS MAP FOR CORRECTED NYE PLACER CORNERS 2,3,4,5, AND 6. THE NEW LAND CORNER RECORDS SUPERCEDE THE CORNER RECORDS FOR THESE CORNERS RECORDED IN 1978.

DURING A POSTING SURVEY FOR UMATILLA NATIONAL FOREST IN LATE 1986, FAYETTE S. "SCOTT" MUNRO, L.S. 1832, RECOVERED A STONE MOUND AND SAWN WOOD POST NEAR THE NYE PLACER COR. 4 MONUMENT ESTABLISHED BY THIS SURVEYOR IN 1978. MR. MUNRO CONTACTED ME, I REVIEWED THE EVIDENCE AND DECIDED TO ACCEPT THE POSITION OF THE STONE MOUND FOR NYE PLACER CORNER 4. THIS CHANGED THE POSITIONS OF ADJACENT NYE PLACER CORNERS 2,3,5, AND 6. DURING THE CORRECTIVE SURVEY WORK, I DETERMINED TO USE SHORT CALCULATED RECORD TIES BETWEEN NYE PLACER CORNER 9 (CLIMAX COR. 3) AND NYE PLACER CORNER 12 (RED BOY MILLSITE COR. 2) TO REESTABLISH NYE PLACER CORNERS 5 AND 3 RESPECTIVELY. NYE PLACER CORNER 6 WAS REESTABLISHED BY COMPASS RULE METHOD BETWEEN FOUND NYE PLACER CORNER 7 AND REESTABLISHED NYE PLACER CORNER 5. NYE PLACER CORNER 2 WAS REESTABLISHED BY COMPASS RULE METHOD BETWEEN REESTABLISHED NYE PLACER CORNERS 1 AND 3. PRIOR TO USING THE COMPASS RULE METHOD, RECORD BEARINGS WERE ROTATED TO OBSERVED BEARINGS. A THROUGH SEARCH WAS MADE AT ALL REESTABLISHED CORNER POSITIONS FOR ORIGINAL EVIDENCE WITHOUT SUCCESS. BEARINGS ARE BASED ON THE OBSERVED SOLAR BEARING BETWEEN CLIMAX CORNER 2 AND NYE PLACER CORNER 1, AS SHOWN ON THE 1978 PLAT. MEASUREMENTS WERE MADE WITH T 16 THEODOLITE AND STEEL TAPE, BASED ON THE CONTROL SURVEY BY SCOTT MUNRO. MR. MUNRO'S MEASUREMENTS BETWEEN NYE PLACER CORNERS 1 THROUGH 7 ARE FOR PRACTICAL PURPOSES THE SAME AS THOSE OBSERVED IN 1978.

LISTED BELOW ARE THE BEARINGS AND DISTANCE MOVES BETWEEN 1978 MONUMENT POSITIONS AND POSITIONS OF CORRECTED MONUMENTS OF 1987:

1978 POSITION OF NYE PLACER CORNER 2 WAS MOVED N22°18'05"E 23.83' TO PRESENT POSITION, AND MONUMENTED.
 1978 POSITION OF NYE PLACER CORNER 3 WAS MOVED N39°52'50"E 29.97' TO PRESENT POSITION, AND MONUMENTED.
 1978 POSITION OF NYE PLACER CORNER 4 WAS MOVED N65°37'10"E 23.40' TO PRESENT POSITION AND MONUMENTED.
 1978 POSITION OF NYE PLACER CORNER 5 WAS MOVED S79°06'00"E 21.09' TO PRESENT POSITION AND MONUMENTED.
 1978 POSITION OF NYE PLACER CORNER 6 WAS MOVED S79°54'15"E 15.09' TO PRESENT POSITION AND MONUMENTED.

NOTE: THIS SURVEY IS LOCATED IN THE SE 1/4 OF SECTION 10 AND THE SW 1/4 OF SECTION 11, TWP 9S, R35E, WM, GRANT COUNTY, OREGON.

RECEIVED AND
FILED

MAY 29 1987

Office of County Surveyor
Grant County, Oregon
Surveyor: *William R. Wells*

REGISTERED
PROFESSIONAL
LAND SURVEYOR

With R. Wells
OREGON
JULY 22, 1977
WILLIAM R. WELLS
1106

5-11-87

RECORD OF SURVEY PLAT FOR UMATILLA NATIONAL FOREST

OF A PORTION OF NYE PLACER MS601
LOCATED IN SECTIONS 10 AND 11, T9S, R35E, WM,
GRANT COUNTY, OREGON.

SURVEYED BY: WILLIAM R. WELLS, PLS
P.O. BOX 1696, PENDLETON, OREGON
PHONE: 276-6362

DATE: MAY 11, 1987