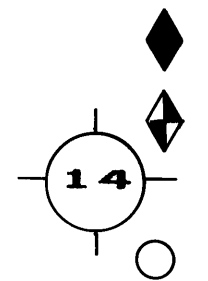


MAP OF SURVEY

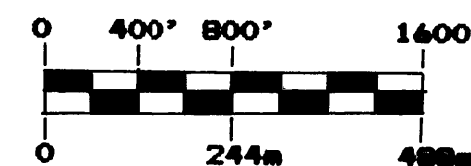
SUBDIVISION OF SECTIONS 11 & 14, T9S, R32E, WM

LEGEND

- Section Corners Previously Set
- Section & 1/4 Corners Set by Found Evidence
- C1/4 Corners Set by Survey
- 1/16 Corners Set by Survey
- Posted National Forest Boundary Lines
- NF Boundary Not Posted This Survey
- Section Lines
- Center Section Lines
- Projected Lines
- Legal Subdivision of USFS Property
- Record Bearing & Distance in Parentheses
- Certified Corner Record Index No.
See Corner Restoration Records



Basis for Bearings
Solar Observation
Assumed Magnetic Declination 18° 30'E



Monuments Set are 2" Aluminum Pipe with 3 1/4" Aluminum Cap

See NARRATIVE OF SURVEY on Map 2

PROOF OF RECORDING

The following CERTIFIED RECORDS OF LAND CORNER MONUMENTATION in T9S, R32 & 33E, WM, were received from Leland Lee Myers, PLS 699 with these Maps of Survey 1-3, to be entered into the official county surveyor records.

Corner Index Nos.	No. of Corners Monumented
T9S, R32E: E-19, G-17, G-18, G-19, G-21, J-17, J-18, J-19, K-17, K-18, L-17, L-19, L-21, N-19, P-17, R-17, R-19, R-21, R-23, R-25, T-17, T-21, T-23, T-25, U-23, U-25, V-21, V-23, V-25, Y-17 & Z-17	31
T9S, R33E: R-3, R-5, R-5 1/2, R-6, R-7, R-9, S-1, S-2, S-5 1/2, S-6, T-2, T-3, T-5, T-7, T-9, U-2, V-3, V-5, V-7, X-1, X-3, X-3 1/2, X-4, X-5, Y-1, Y-3, Y-3 1/2, Y 1/2-2, Y 1/2-3, Y 1/2-4, Y 1/2-1, Y 1/2-2, Z-1, Z-3 & Z-5	35
Total Corners Submitted With Maps 1-3	66

I hereby certify that the CERTIFIED RECORDS OF LAND CORNER MONUMENTATION listed above have been filed in the Office of the Grant County Surveyor this 23 day of Feb, 1987.

Robert D. Baggett
Grant County Surveyor

CERTIFICATION

I, Leland Lee Myers, a Professional Land Surveyor registered in the State of Oregon, office located at 587 E. Auburn St., P.O. Box 98, Sumpter, OR 97877, do hereby certify that I did perform this survey July 25 to October 17, 1986, as a contractor at the request of the USDA-Forest Service by Arm Cadastral Survey Contract No. 53-04H1-5-0149N and that the information shown hereon is correct to the best of my knowledge.

REGISTERED
PROFESSIONAL
LAND SURVEYOR

Leland Lee Myers
OREGON
JULY 9, 1985
LELAND LEE MYERS
699

RECEIVED AND
FILED

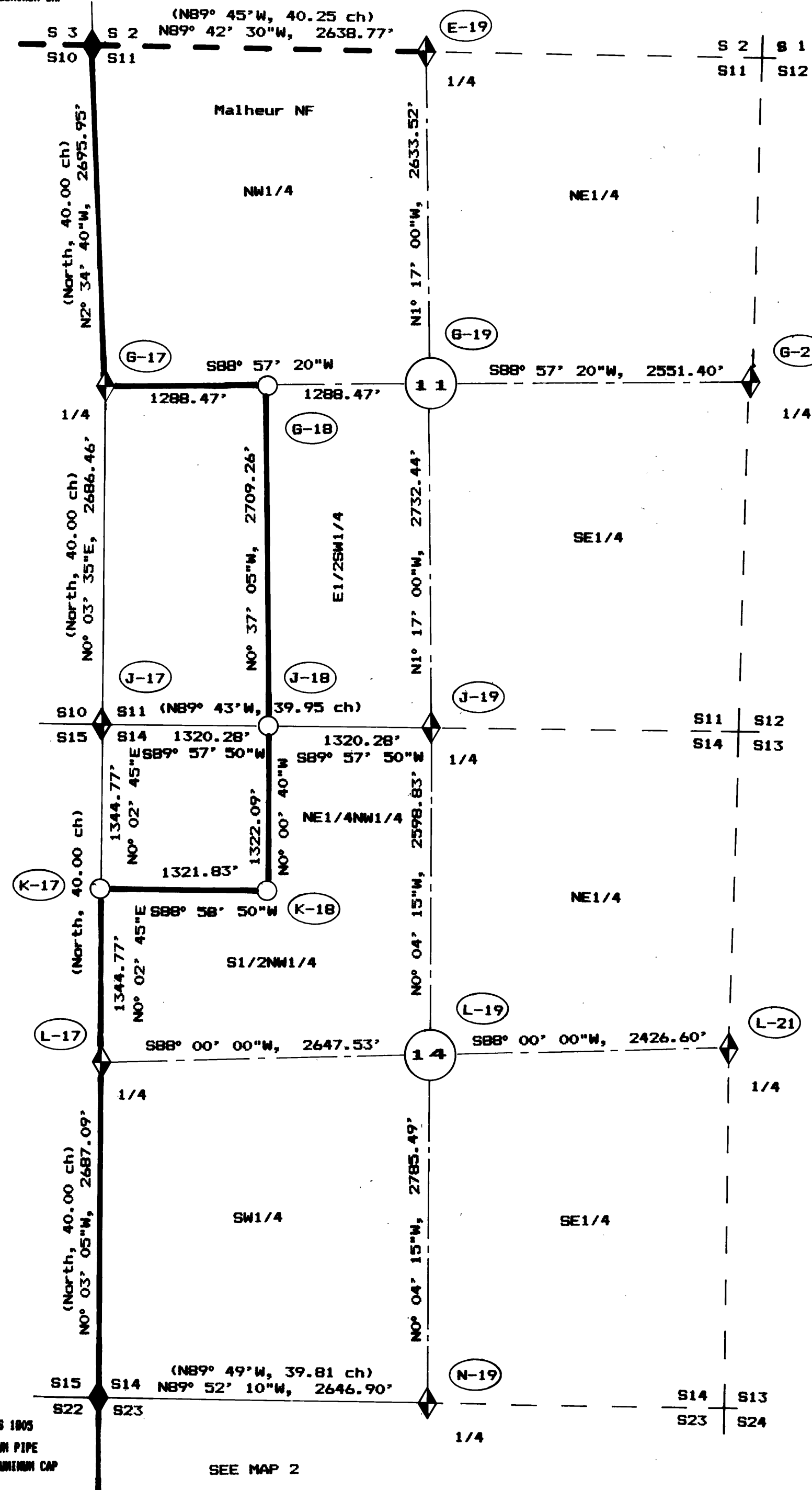
FEB 23 1987

OFFICE OF COUNTY SURVEYOR
Attest: *John W. Baggett*

MAP 1 OF 3

Umatilla NF

1985 NPLS 1910 2" ALUMINUM PIPE
WITH 2 1/2" ALUMINUM CAP



1979 OPLS 1805
2" ALUMINUM PIPE
WITH 3 1/4" ALUMINUM CAP

SEE MAP 2