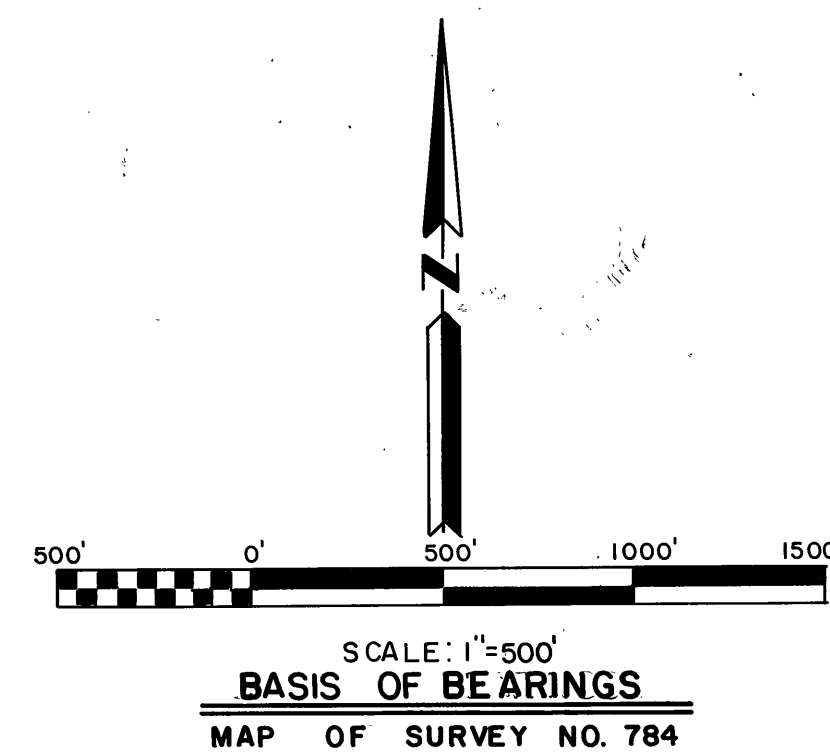
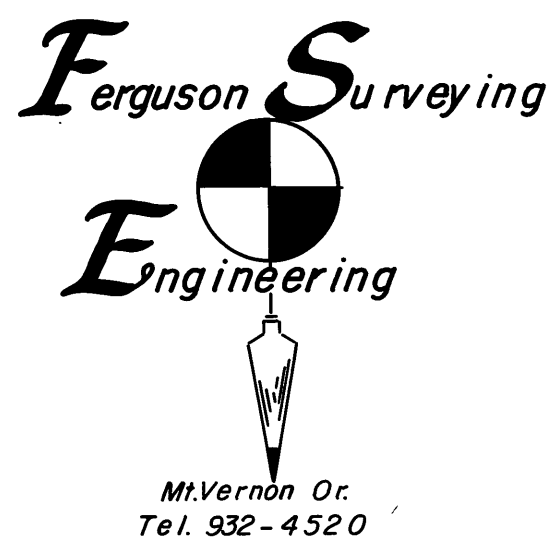


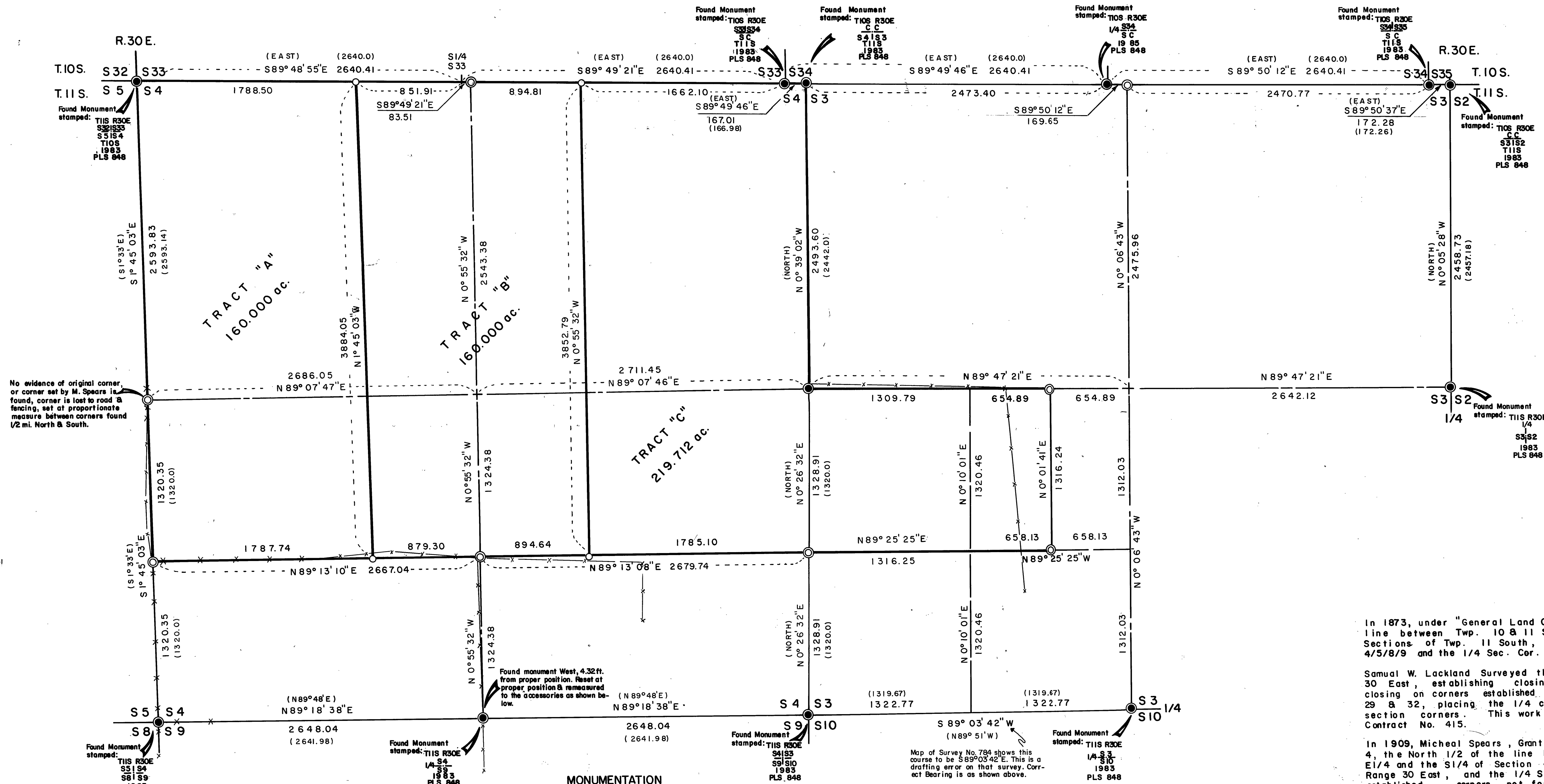
LOCATION OF TRACTS OF LAND
IN SECTIONS 3 & 4, T.11S, R.30E., W.M.
Grant County Oregon.

May, 1986
FOR: Fred Moore, Mt. Vernon OR.
Drawn By: Douglas M. Ferguson & Mollee Wood
Surveyed By: Douglas M. Ferguson, OR. PLS 848



LEGEND

- ⊙ Set 2-1/2" x 30" aluminum pipe, with 3-1/2" aluminum cap, stamped as shown below
- Found 3 1/2" aluminum capped monument, as shown on the map below Lt. (See Maps Of Survey 784 & 913)
- Set 5/8" x 30" iron pin with plastic cap stamped "PLS 848 SURVEY MARKEY"
- Existing fence line
- () Bearing or Distance of Record, as Reported by the original General Land Office Survey. (See "HISTORY" below)



NARRATIVE

This Survey is performed by agreement for Fred Moore, the purpose of which is the delineation of the boundaries of the following land. In T.11S., R.30E., Section 4., The North 1/2, and the North 1/2 of the South 1/2. Section 3., the Northwest 1/4 of the Southwest 1/4 and the West 1/2 of the Northeast 1/4 of the Southwest 1/4. The purpose is also to divide the above described land in to three tracts, as shown. In order to accomplish this it is necessary to re-establish the 1/4 Sec. Corner between S5/S4, the North Closing 1/4 Corner of Section 3, and the North Closing 1/4 Corner of Section 4, then to subdivide Sections 3 & 4 and divide the land in to the appropriate size tracts, as shown. This Survey is based on Map of Survey No. 784, as performed by this Surveyor, PLS 848, in 1983, the control network from that Map of Survey No. 784 is used and extended as required to perform this Survey, as such the Bearings and Distances as reported on that Survey are not shown hereon as there is no change with this being a continuation of the survey shown by Map of Survey No. 784

This Survey is performed in accordance with provisions of Chapters 3,4,5&6 of the "Bureau of Land Management", "Manual of Surveying Instructions" of 1973. The notes on the map and the CERTIFIED RECORD OF LAND CORNER MONUMENTATION, as referenced to this map and filed in the Office of the Grant County Surveyor are referred to here as a portion of this NARRATIVE.

Positional control for this survey is provided by a closed traverse network. LIETZ SDM 3E Electronic Tacheometer is used to obtain the measurements and HP-68B computer system is used to perform the computations. Field Notes and computations are on file in the office of "Ferguson Surveying & Engineering", Mt. Vernon Oregon.

HISTORY

In 1873, under "General Land Office" Contract No. 197, W.H. Byars Surveyed the line between Twp. 10 & 11 South, Range 30 East, and the West two tiers of Sections of Twp. 11 South, Range 30 East, including the Corners to sections 4/5/8/9 and the 1/4 Sec. Cor. 5/4.

Samuel W. Lackland Surveyed the East 4 tiers of Sections in Twp. 11 South, Range 30 East, establishing closing corners between Sections 4/3, 3/2, & 2/1, and closing on corners established by Byars, on the East lines of sections 8,8,17,20, 29 & 32, placing the 1/4 corners of those closing lines at midpoint between section corners. This work was performed in 1881, under General Land Office Contract No. 415.

In 1909, Micheal Spears, Grant County Surveyor retraced the exteriors of Section 4, the North 1/2 of the line between Sections 9 & 10, where he found the SE, SW, E1/4 and the S1/4 of Section 4, the standard corner Sec. 33/34, Twp. 10 South, Range 30 East, and the 1/4 Sec. 9/10, Twp. 11 South Range 30 East. He then re-established corners not found and subdivided Section 4. The Notes to this survey work is shown in Survey Record Book 1, Page 25, of the Grant County Clerks Records.

In 1983, this Surveyor, PLS 848, retraced and re-established the line between Twp. 10 & 11 South, Range 30 East, the exterior lines of Sections 3,4 & 10, Twp. 11 South, Range 30 East, and subdivided that Section 10, all as shown on Map of Survey No. 784, of the Grant County Survey Records.

In 1985, this Surveyor, PLS 848, performed a survey which conforms to the line between Twp. 10 & 11 South, Range 30 East, and Set the Standard South 1/4 Corner of Section 34, Twp. 10 South, Range 30 East, at the position as determined on Map of Survey No. 784 of the Grant County Survey Records. This Work is shown on Map of Survey No. 913, of the Grant County Survey Records.

MONUMENTATION

See standard "INDEX No." in the circle below and on the corresponding circle on the Map above. Refer to "CERTIFIED RECORD OF LAND CORNER MONUMENTATION" form, as referenced to This Map of Survey and filed in the office of the Grant County Surveyor. Those forms give complete details as to the history pertaining to these corners, as well as complete information as to the evidence found, method of establishment, description of monuments set & accessories established. Monumentation basically consists of the following: Monuments as shown in the LEGEND are stamped as shown below. Bearing Trees or other accessories are established as shown below, with Bearing Tree signs nailed above the blaze, and brass washers stamped "PLS 848" nailed on the blaze, above the BT scribing. Painted a 6" red band around each tree, at breast height.

- | | | |
|---|---|---|
| <p>T11S R30E S33/4 S34/4 S35/4 S36/4 S37/4 S38/4 S39/4 S40/4 S41/4 S42/4 S43/4 S44/4 S45/4 S46/4 S47/4 S48/4 S49/4 S50/4 S51/4 S52/4 S53/4 S54/4 S55/4 S56/4 S57/4 S58/4 S59/4 S60/4 S61/4 S62/4 S63/4 S64/4 S65/4 S66/4 S67/4 S68/4 S69/4 S70/4 S71/4 S72/4 S73/4 S74/4 S75/4 S76/4 S77/4 S78/4 S79/4 S80/4 S81/4 S82/4 S83/4 S84/4 S85/4 S86/4 S87/4 S88/4 S89/4 S90/4 S91/4 S92/4 S93/4 S94/4 S95/4 S96/4 S97/4 S98/4 S99/4 S100/4</p> | <p>T11S R30E S33/4 S34/4 S35/4 S36/4 S37/4 S38/4 S39/4 S40/4 S41/4 S42/4 S43/4 S44/4 S45/4 S46/4 S47/4 S48/4 S49/4 S50/4 S51/4 S52/4 S53/4 S54/4 S55/4 S56/4 S57/4 S58/4 S59/4 S60/4 S61/4 S62/4 S63/4 S64/4 S65/4 S66/4 S67/4 S68/4 S69/4 S70/4 S71/4 S72/4 S73/4 S74/4 S75/4 S76/4 S77/4 S78/4 S79/4 S80/4 S81/4 S82/4 S83/4 S84/4 S85/4 S86/4 S87/4 S88/4 S89/4 S90/4 S91/4 S92/4 S93/4 S94/4 S95/4 S96/4 S97/4 S98/4 S99/4 S100/4</p> | <p>T11S R30E S33/4 S34/4 S35/4 S36/4 S37/4 S38/4 S39/4 S40/4 S41/4 S42/4 S43/4 S44/4 S45/4 S46/4 S47/4 S48/4 S49/4 S50/4 S51/4 S52/4 S53/4 S54/4 S55/4 S56/4 S57/4 S58/4 S59/4 S60/4 S61/4 S62/4 S63/4 S64/4 S65/4 S66/4 S67/4 S68/4 S69/4 S70/4 S71/4 S72/4 S73/4 S74/4 S75/4 S76/4 S77/4 S78/4 S79/4 S80/4 S81/4 S82/4 S83/4 S84/4 S85/4 S86/4 S87/4 S88/4 S89/4 S90/4 S91/4 S92/4 S93/4 S94/4 S95/4 S96/4 S97/4 S98/4 S99/4 S100/4</p> |
|---|---|---|

RECEIVED AND
FILED

JUN 20 1986

OFFICE OF COUNTY SURVEYOR
Douglas M. Ferguson
Attest: [Signature]

