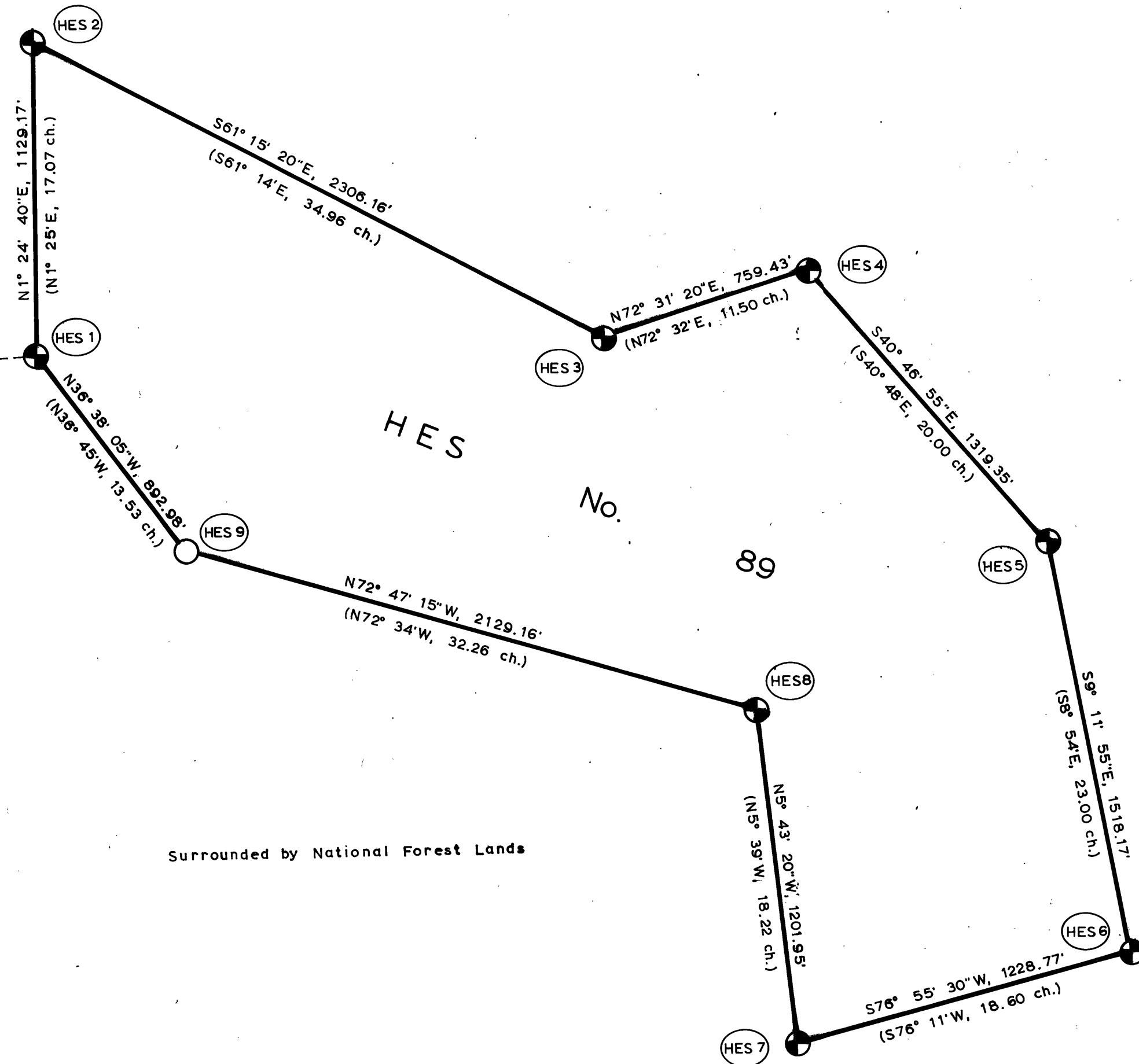


MAP OF SURVEY of Homestead Entry No. 89 in the Unsurveyed T11S, R35 1/2E, WM

T11S
R35E R35 1/2E

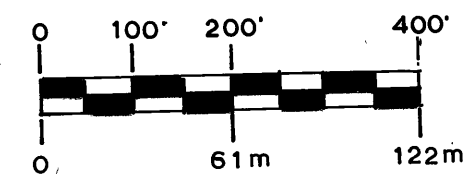
UNSURVEYED

S25 S28
S36 S33
SEE MAP 3



Basis for Bearings
Solar Observation

Assumed Magnetic Declination 18° 30' E



LEGEND

Found Section Corner

Homestead Entry Corners Set by Found Evidence

Homestead Entry Corner Set by Survey

All HES monuments are 2" Galvanized Pipe with 2 1/2" Brass Cap

Posted Property Lines

Tie Lines

Certified Corner Record Index No.
See Corner Restoration Records

Record Bearings & Distance in Parentheses

See separate Narrative of Survey for additional information.

CERTIFICATION

I, Leland Lee Myers, a Professional Land Surveyor in the State of Oregon, at PO Box 98, Sumpter, OR 97877, do hereby certify that I did perform this survey August 16-20, 1985, as a contractor at the request of the USDA-Forest Service by Contract No. 53-04H1-4-9667N and that the information shown hereon is correct to the best of my knowledge.

REGISTERED
PROFESSIONAL
LAND SURVEYOR

OREGON
JULY 9, 1985
LELAND LEE MYERS
699

RECEIVED AND
FILED

OCT 25 1985

Robert D. Boyer
Surveyor

MAP 2 OF 7

MAP OF SURVEY NO. 900