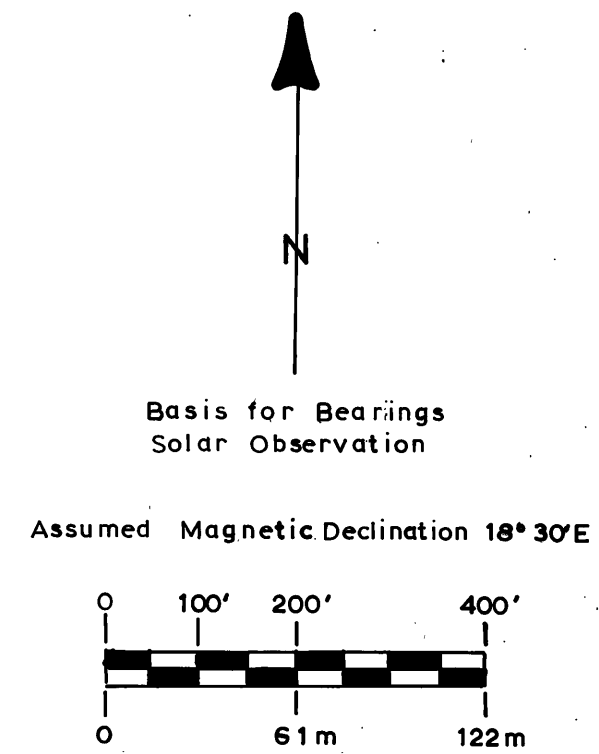
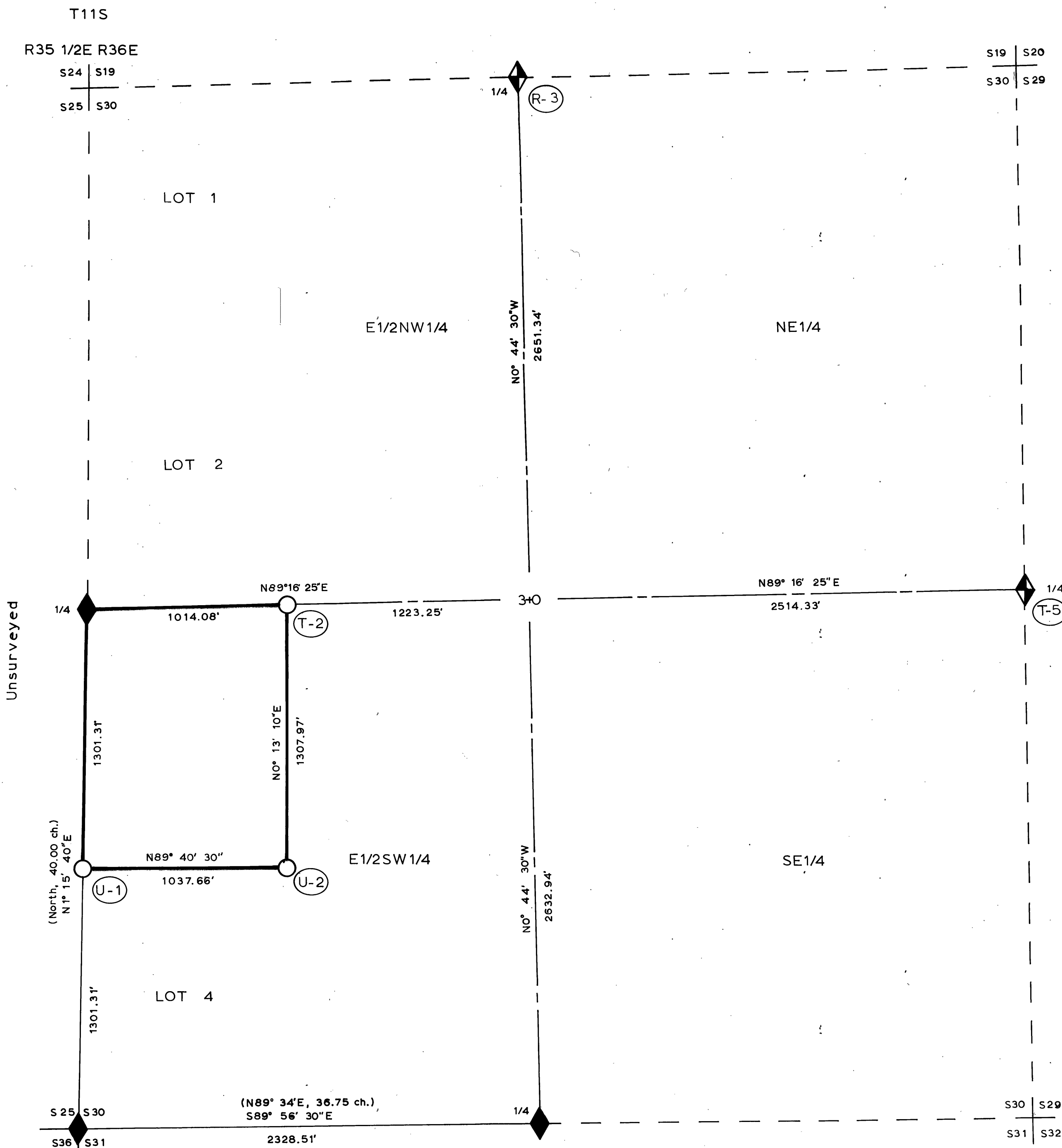


MAP OF SURVEY of Lot 3, Section 30, T11S, R36E, WM



LEGEND

- Section & 1/4 Corners Set 1979 by OPLS 1805
2" Aluminum Pipe with 3 1/4" Aluminum Cap
- Section & 1/4 Corners Set by Found Evidence
2" Aluminum Pipe with 3 1/4" Aluminum Cap
- 1/16 Corners Set by Survey - Same as Above
- Posted Property Lines
- Section Lines
- Center Section Lines
- Projected Lines
- Certified Corner Record Index No.
See Corner Restoration Records
- Legal Subdivision of USFS Property
- Record Bearing & Distance in Parentheses
(40.00 ch.)



See separate Narrative of Survey for additional information.

CERTIFICATION

I, Leland Lee Myers, a Professional Land Surveyor in the State of Oregon, at PO Box 98, Sumpter, OR 97877, do hereby certify that I did perform this survey August 13-17, 1985, as a contractor at the request of the USDA-Forest Service by Contract No. 53-04H1-4-9667N and that the information shown hereon is correct to the best of my knowledge.



RECEIVED AND FILED
OCT 25 1985

OF COUNTY SURVEYOR
Robert D. Bagot