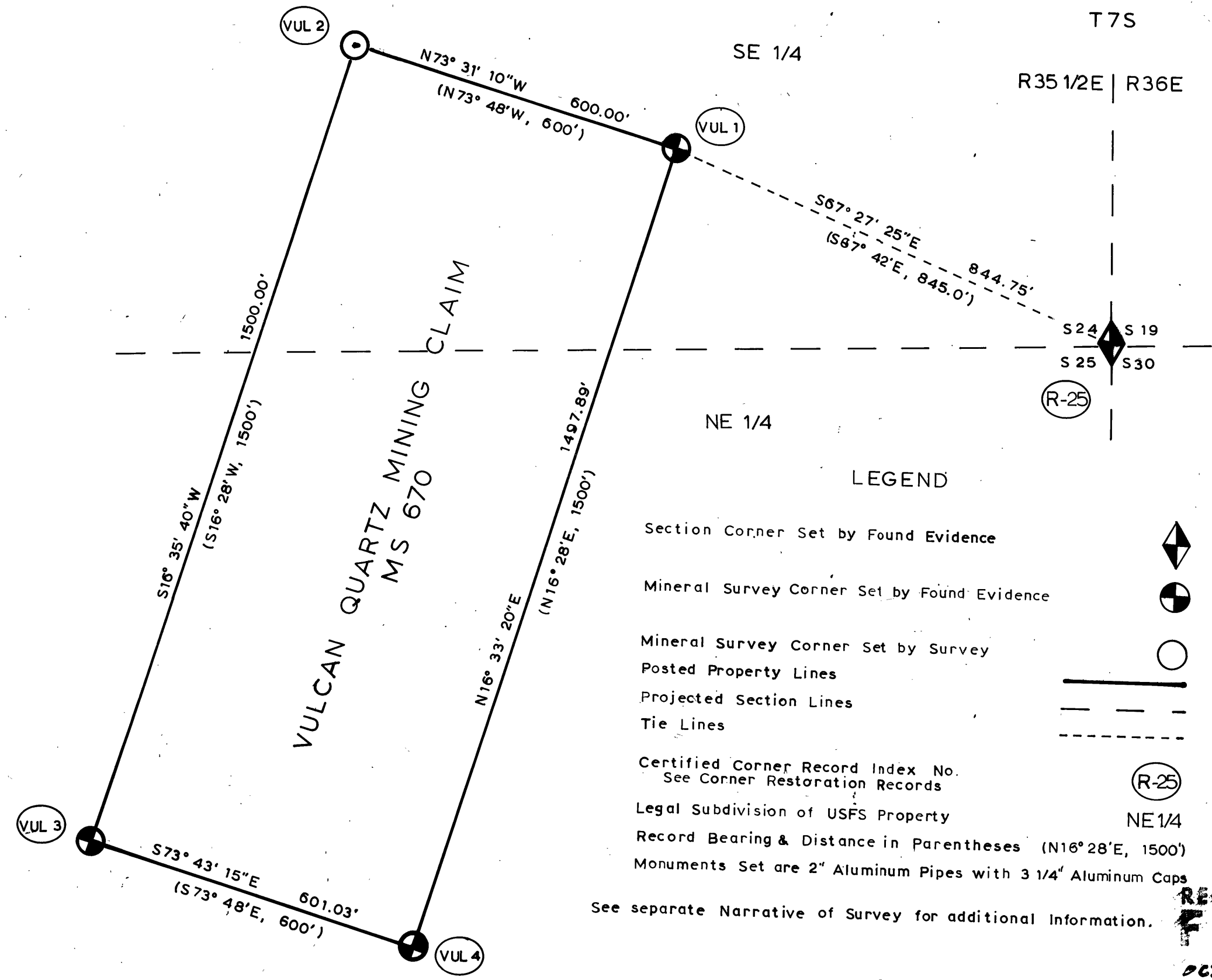
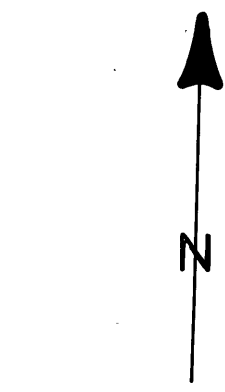


# MAP OF SURVEY of VULCAN QUARTZ MINING CLAIM in Sections 24 & 25, T7S, R35 1/2E, WM



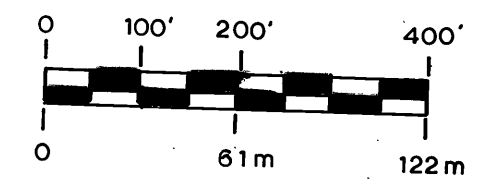
## LEGEND

- Section Corner Set by Found Evidence
- Mineral Survey Corner Set by Found Evidence
- Mineral Survey Corner Set by Survey
- Posted Property Lines
- Projected Section Lines
- Tie Lines
- Certified Corner Record Index No. See Corner Restoration Records
- Legal Subdivision of USFS Property
- Record Bearing & Distance in Parentheses (N16° 28' E, 1500')
- Monuments Set are 2" Aluminum Pipes with 3 1/4" Aluminum Caps
- See separate Narrative of Survey for additional Information.



Basis for Bearings  
Solar Observation

Assumed Magnetic Declination 18° 30' E



## CERTIFICATION

I, Leland Lee Myers, a Professional Land Surveyor in the State of Oregon, at PO Box 98, Sumpter, OR 97877, do hereby certify that I did perform this survey on July 17 & 18, 1985, as a contractor at the request of the USDA-Forest Service by Contract No. 53-04M3-3-2928 and that the information shown hereon is correct to the best of my knowledge.

REGISTERED  
PROFESSIONAL  
LAND SURVEYOR

*Leland Lee Myers*

OREGON  
JULY 9, 1965  
LELAND LEE MYERS  
699

RECEIVED AND  
FILED

OCT 16, 1985

CLERK OF COUNTY SURVEYOR  
*Robert D. Byrd*  
Attest: *John L. Smith*