

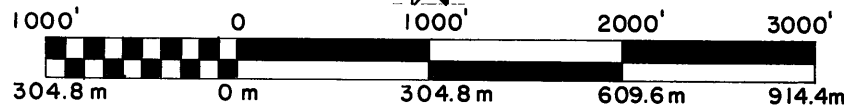
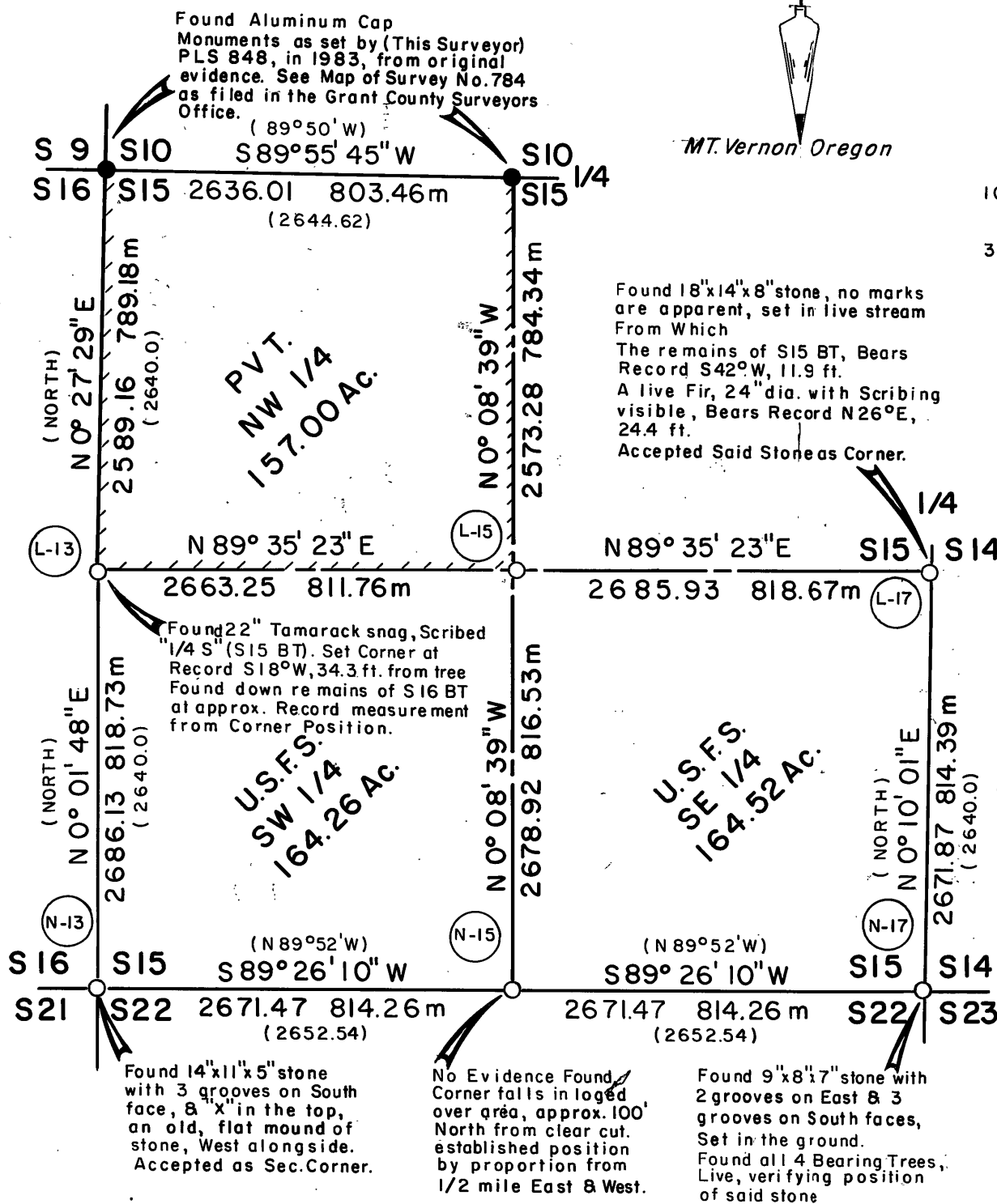
Subdivision Section 15
T.11S., R.30E., W. M.
Grant County Oregon
Aug. 1985

By: Douglas M. Ferguson & Kenneth H. Delano

Ferguson Surveying
Engineering

MT. Vernon Oregon

MAG. DEC. = 20° E.



SCALE: 1"=1000'

BASIS OF BEARINGS

Map of Survey No. 784, as on file in the office of the Grant County Surveyor. True meridian along the West line of Section 15.

LEGEND

- Found 3-1/2" Aluminum Cap Monument of Record, See Map of Survey No. 784, as filed in the Grant County Surveyors Office.
- Set 2 1/2" 30" Aluminum Pipe, with 3-1/2" Aluminum Cap. (see MONUMENTATION on this map, below Lt.)
- () Record Bearing or Distance from original G. L. O. Survey

Property line, marked by setting steel posts with "FOREST BOUNDARY" signs at maximum intervals of \approx 200'

MONUMENTATION

See standard U.S.F.S. "INDEX" number, in circle, on the map. Monuments are stamped as shown below. Nailed Bearing Tree signs above blaze, warning signs on back & brass washers stamped "PLS 848" on blaze, above BT scribe on each tree. Set steel posts with warning and boundary signs, on line, approx. 5 ft. from each corner. One post at controlling corners, within 5' of the corner.

See "CERTIFIED" RECORD OF LAND CORNER MONUMENTATION" forms as on file in the office of the Grant County Surveyor, for complete history, description of evidence found, monument set and accessories established.

HISTORY

Section 15 was originally surveyed by Samuel W. Lackland, in Sept., 1881, under General Land Office Contract No. 415.

In 1983, this surveyor, Douglas M. Ferguson, PLS 848, retraced and monumented the North line of Sec. 15 (See Map of Survey No. 784, as on file in the office of the Grant Co. Surveyor).

NARRATIVE

This survey is performed under contract for the Malheur National Forest, the purpose of which is the monumentation and marking of the Forest Boundary & controlling corners of Sec. 15. All controlling corners are found except the South 1/4 cor, which is lost to logging & therefore proportioned as shown.

Pertinent provisions of the Bureau of Land Management, "Manual of Surveying Instructions," of 1973 are followed in the performance of this survey, in particular, Chapters Four, Five & Six.

Positional control for this survey is provided by a closed traverse network. LIETZ SDM 3-E Total Station Electronic Distance Measuring Equipment & HP-86B Computer System are used to obtain the measurements and perform the computations. Field notes and computations are on file in the office of "Ferguson Surveying & Engineering, Mt. Vernon Oregon.

I, Douglas M. Ferguson, Registered Professional Land Surveyor in the State of Oregon, Hereby certify that this plat, notes and records hereon or attached are a correct representation of the survey I performed during Aug., 1985, for the U.S. Forest Service, in accordance with the statutes of the State of Oregon and articles of my contract, No. 53-04H1-A-9664N

Douglas M. Ferguson, Ore. PLS 848

RECEIVED AND
FILED

OCT 16 1985

OFFICE OF COUNTY SURVEYOR
Robert O. Baggett
Attest: [Signature]

REGISTERED
PROFESSIONAL
LAND SURVEYOR

OREGON
JULY 12, 1968
DOUGLAS M. FERGUSON
848