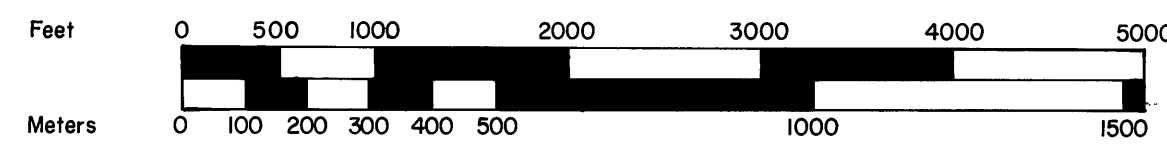


Scale: 1" = 1000'

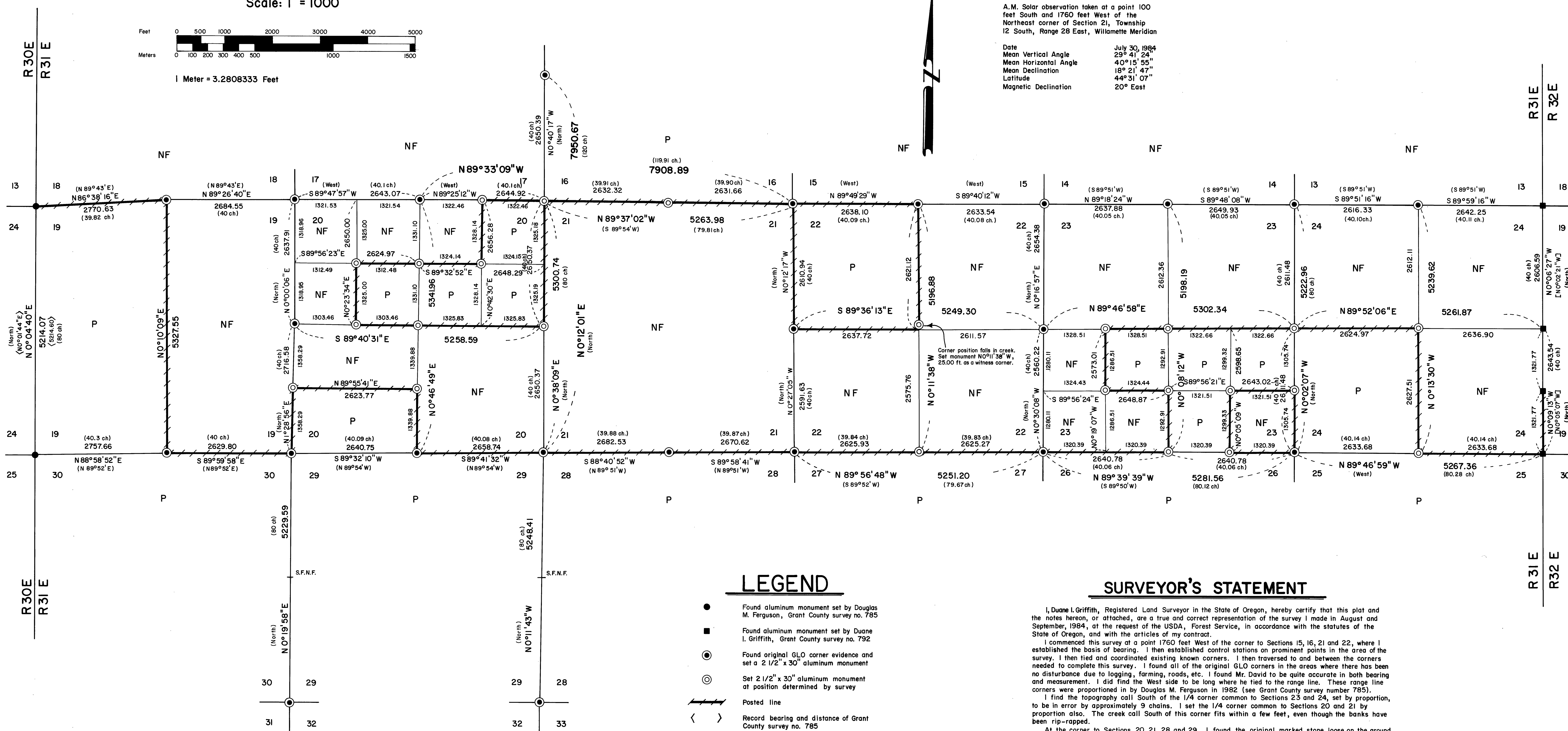


1 Meter = 3.2808333 Feet

## BASIS OF BEARING

A.M. Solar observation taken at a point 100 feet South and 1760 feet West of the Northeast corner of Section 21, Township 12 South, Range 28 East, Willamette Meridian

Date July 30, 1984  
Mean Vertical Angle 29° 41' 24"  
Mean Horizontal Angle 40° 15' 55"  
Mean Declination 18° 21' 47"  
Latitude 44° 31' 07"  
Magnetic Declination 20° East



## LEGEND

- Found aluminum monument set by Douglas M. Ferguson, Grant County survey no. 785
- Found aluminum monument set by Duane I. Griffith, Grant County survey no. 792
- Found original GLO corner evidence and set a 2 1/2" x 30" aluminum monument
- Set 2 1/2" x 30" aluminum monument at position determined by survey
- Posted line
- Record bearing and distance of Grant County survey no. 785
- Record bearing of Grant County survey no. 792
- Record bearing and distance of original GLO survey
- S.F.N.F. Corner searched for but not found
- NF National Forest land
- P Non-Forest land

## SURVEYOR'S STATEMENT

I, Duane I. Griffith, Registered Land Surveyor in the State of Oregon, hereby certify that this plat and the notes hereon, or attached, are a true and correct representation of the survey I made in August and September, 1984, at the request of the USDA, Forest Service, in accordance with the statutes of the State of Oregon, and with the articles of my contract.

I commenced this survey at a point 1760 feet West of the corner to Sections 15, 16, 21 and 22, where I established the basis of bearing. I then established control stations on prominent points in the area of the survey. I then tied and coordinated existing known corners. I then traversed to and between the corners needed to complete this survey. I found all of the original GLO corners in the areas where there has been no disturbance due to logging, farming, roads, etc. I found Mr. David to be quite accurate in both bearing and measurement. I did find the West side to be long where he tied to the range line. These range line corners were proportioned in by Douglas M. Ferguson in 1982 (see Grant County survey number 785).

I find the topography call South of the 1/4 corner common to Sections 23 and 24, set by proportion, to be in error by approximately 9 chains. I set the 1/4 corner common to Sections 20 and 21 by proportion also. The creek call South of this corner fits within a few feet, even though the banks have been rip-rapped.

At the corner to Sections 20, 21, 28 and 29, I found the original marked stone loose on the ground, in a fence line. There was wire wrapped around the stone. It appears to have been used as a weight. At the fence corner, there is a 20 inch diameter pine stump scribed S20 T123 R31E. I am unable to date these marks by ring count. There was the remains of a mound of stone Southeast of this unrecorded bearing tree. I ran South to the corner to Sections 28, 29, 32 and 33, (the 1/4 corner corner common to Sections 28 and 29 was not found). At this Section corner, I found the original marked stone in a mound of stone. It appears to me there was a fence jack built over the mound. Approximately 120 feet West I found a stone of call size in the fence line. This stone is marked for this corner. The stone is of a very soft material and the grooves are very deep. This does not fit Mr. David's pattern of marking. For the corner common to Sections 20, 21, 28 and 29, I therefore accept the remains of the mound of stone as the position of the original corner due to the overall harmony of bearings and distances North, South, East and West.

At the corner to Sections 19, 20, 29 and 30 I found a stone of call size in a dim mound of stone. The stone is flaking badly and makes the marks very hard to determine. I ran South one mile to the corner to Sections 29, 30, 31 and 32 as shown (the 1/4 corner common to Sections 29 and 30 was not found). Due to the harmonious relationship and the fact that it is the only rock in the area of call size, I accept this stone as the original corner stone to Sections 19, 20, 29 and 30.

I tied this survey to the survey I made in Township 12 South, Range 32 East in the fall of 1983, at the East line of Section 24. Due to a different basis of bearing, I show a record bearing for Township 12 South, Range 32 East.

I found no unusual conditions in this survey.

## National Forest Lands

- Section 13
- Section 14
- Section 15
- Section 17
- Section 18
- Section 19 - The East 1/2
- Section 20 - The Southeast 1/4, the North 1/2 of the Southwest 1/4, the Southwest 1/4 of the Northwest 1/4, the North 1/2 of the Northwest 1/4 and the Northwest 1/4 of the Northeast 1/4
- Section 21
- Section 22 - The South 1/2 and the Northeast 1/4
- Section 23 - The North 1/2, the Southeast 1/4 of the Southwest 1/4, the South 1/2 of the Southwest 1/4 and the Northwest 1/4 of the Southwest 1/4
- Section 24 - The East 1/2 and the Northwest 1/4

## History of Surveys

The South half of Township 12 South, Range 31 East, both subdivision and exterior, was established by John B. David under GLO contract number 131 dated June 8, 1869.

The North half of Township 12 South, Range 31 East was subdivided by Herman D. Gradon under GLO contract number 416 dated August 19, 1891.

The West line of Section 19, Township 12 South, Range 31 East was remonumented in 1982 by Douglas M. Ferguson (Grant County Survey number 785)

The East line of Section 24, Township 12 South, Range 31 East was remonumented in 1983 by Duane I. Griffith (Grant County Survey number 792)

NOTE:  
For monumentation information, see remonumentation sheets filed separately.

RECEIVED AND  
FILED

FEB 11 1985

OFFICE OF COUNTY SURVEYOR  
Attest: *Deane Griffith, R.L.S.*

*Duane I. Griffith*  
Duane I. Griffith, OPLS 644  
Baggett, Griffith and Associates  
P.O. Box 576  
La Grande, OR 97850

<b>BAGETT - GRIFFITH &amp; ASSOCIATES</b> La Grande, Oregon Map of Survey		
Survey in Township 12 South, Range 31 East of the Willamette Meridian		
GRANT COUNTY, OREGON		
SURVEYED FOR	Malheur National Forest	
SURVEYED BY	d.i.g.	8-9/84
Scale: 1"=1000'	Drawn by: r.g.r.	1/85