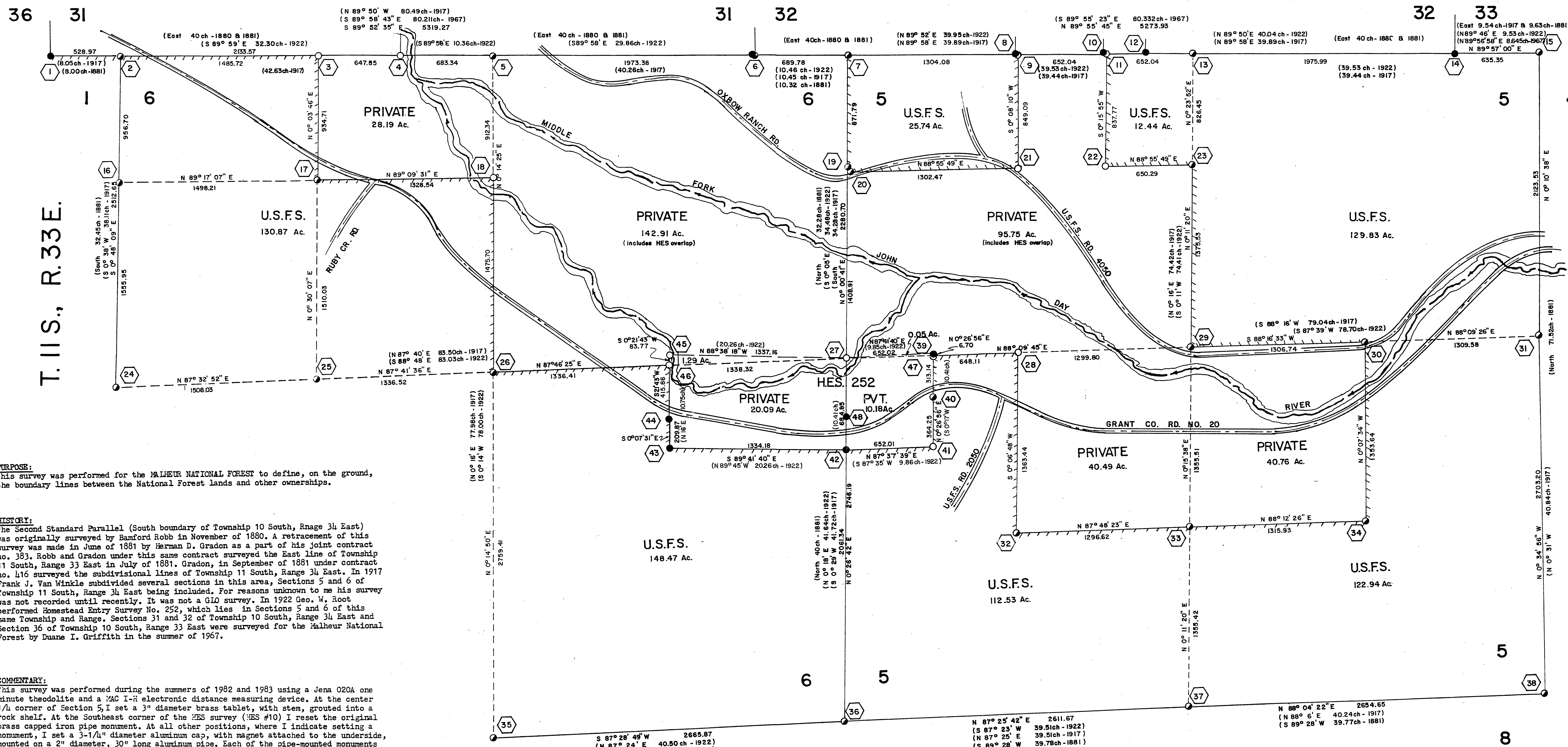


T. 10 S., R. 34 E.



PURPOSE:
This survey was performed for the MALHEUR NATIONAL FOREST to define, on the ground, the boundary lines between the National Forest lands and other ownerships.

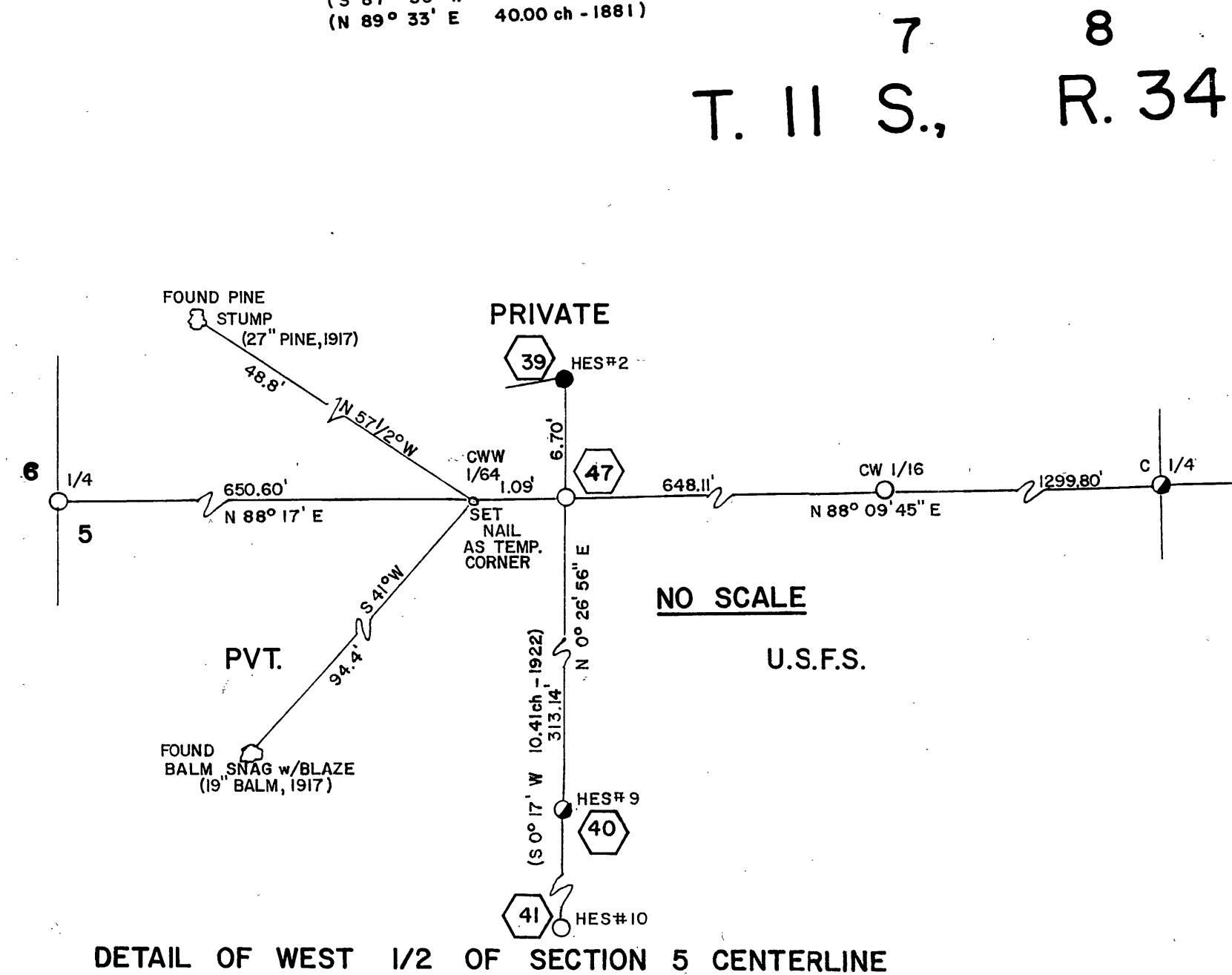
HISTORY:
The Second Standard Parallel (South boundary of Township 10 South, Range 34 East) was originally surveyed by Sanford Robb in November of 1880. A retracement of this survey was made in June of 1881 by Herman D. Graden as a part of his joint contract no. 383, Robb and Graden under this same contract surveyed the East line of Township 11 South, Range 33 East in July of 1881. Graden, in September of 1881 under contract no. 416 surveyed the subdivisional lines of Township 11 South, Range 34 East. In 1917 Frank J. Van Winkle subdivided several sections in this area, Sections 5 and 6 of Township 11 South, Range 34 East being included. For reasons unknown to me his survey was not recorded until recently. It was not a GLO survey. In 1922 Geo. W. Root performed Homestead Entry Survey No. 252, which lies in Sections 5 and 6 of this same Township and Range. Sections 31 and 32 of Township 10 South, Range 34 East and Section 36 of Township 10 South, Range 33 East were surveyed for the Malheur National Forest by Duane I. Griffith in the summer of 1967.

COMMENTARY:
This survey was performed during the summers of 1982 and 1983 using a Jena 020A one minute theodolite and a MAC I-R electronic distance measuring device. At the center 1/4 corner of Section 5, I set a 3" diameter brass tablet, with stem, grouted into a rock shaft. At the Southeast corner of the HES plat (HES #10) I reset the original brass capped iron pipe monument. At all other positions, where I indicate setting a monument, I set a 3-1/4" diameter aluminum cap, with magnet attached to the underside, mounted on a 2" diameter, 30" long aluminum pipe. Each of the pipe-mounted monuments is surrounded by a mound of stones. All of the monuments have a minimum of two accessories, either bearing trees, 5/8" by 30" iron rods with caps, or both. All bearings from accessories to monuments were taken with a hand compass with the declination set at 19° East (I found that the apparent declination varies from 18° to 20° East in this area). Where original stone monuments were found (either GLO or Van Winkle) the new monument has been set at the original position of the stone and the stone has been either buried "upside-down" alongside, or has become "upside-down" a part of the stone mound surrounding the new monument.

In retracing the 2nd Standard Parallel (South line of Township 10 South) I was unable to reconcile monumented corners with the calls of the HES plat which conformed quite closely to the calls of Van Winkle's survey of some five years prior. Examination of the plats of the 1967 survey wherein monuments were set on the Township line tended to indicate that the information available from the HES plat and from Van Winkle's survey may not have been used in the setting of the monument marking the Standard Corner of Sections 31 and 32 of Township 10 South, Range 34 East. By locating this corner at the distances and bearings from the two original bearing trees as found by Van Winkle I am able to very closely match the calls of both Van Winkle and the HES plat for the entire length of the line running from the Standard Township corner East to the closing corner between Sections 5 and 6 of Township 11 South, Range 34 East, and I also find less discrepancy from the original survey.

Monumentation of the HES was found not to conform to the section subdivision lines as the plat indicated it should. The HES plat indicates that the East-West centerlines of Sections 5 and 6 would run from their common point at the 1/4 corner between the two sections to the 1/4 corner positions East and West at the approximate locations indicated by the original GLO plat, rather than their true positions, which are considerably different by field measure. After consultation with the BLM Office in Portland and an examination of the ownerships it was decided that, because the lands to the North of the HES had been previously patented, an overlap did exist, and that the HES surveyor had not protected the prior patents.

At many of the computed positions of the subdivisional corners I found evidence of Van Winkle's survey. I set monuments at these computed positions and related the Van Winkle evidence to them. The close proximity of Van Winkle's corner positions prompted a total re-evaluation of this project. After reviewing the comments of the Portland BLM Office and the procedures used by Van Winkle to establish his corner positions it was decided that the Van Winkle corners, by virtue of their long standing, possible usage, and actual usage, should be held as the true corners. In June of 1983 I changed the positioning of several of my previously set monuments to reflect this decision.



T. 11 S., R. 34 E.

SCALE: 1" = 400'
0 400 800 FT
0 100 243.84 M.
3.28083 FT = 1 METER

LEGEND:
● - MONUMENT SET FROM EVIDENCE
● - BRASS CAPPED MONUMENT FOUND
○ - MONUMENT SET
--- LINE POSTED
GLO - GENERAL LAND OFFICE
U.S.F.S. - UNITED STATES FOREST SERVICE
() - BEARING AND/OR DISTANCE OF RECORD

Mean Magnetic Variation = 19°E

Basis of Bearings for this survey is a set of Solar observations taken near the one-quarter corner between Sections 5 and 6.

I, William F. Ringnald, a Registered Professional Land Surveyor in the State of Oregon, hereby certify that this plat and the notes hereon are a true and correct representation of a survey I performed during the summers of 1982 and 1983, for the United States Forest Service, in accordance with the State of Oregon statutes and the articles of the contract.

REGISTERED PROFESSIONAL LAND SURVEYOR
W.F. Ringnald
OREGON
JULY 14, 1987
WM. F. RINGNALDA
815

RECORD OF SURVEY PLAT
FOR THE U.S. FOREST SERVICE
SECTIONS 5 & 6, T.11S., R.34E., W.M.
GRANT CO., OREGON

JULY 20, 1983
Corrected Nov. 21, 1983
Updated December 1984

SHEET 1 OF 2
JOB NO. 82 - 23

CONTRACT NO. 53-04H1-2-8930N, R6-82-125N

FIELD NOTES ARE IN BOOKS 1-5,
HES CADASTRAL SURVEY
AZIMUTH SURVEYING & ENGINEERING
1560 LANCASTER DR. NE, SALEM, OREGON 97301

RECEIVED AND FILED
JAN 18 1985
OFFICE OF COUNTY SURVEYOR
Robert D. Smith
Attest: Jamie Lawrence

MAP OF SURVEY No. 853