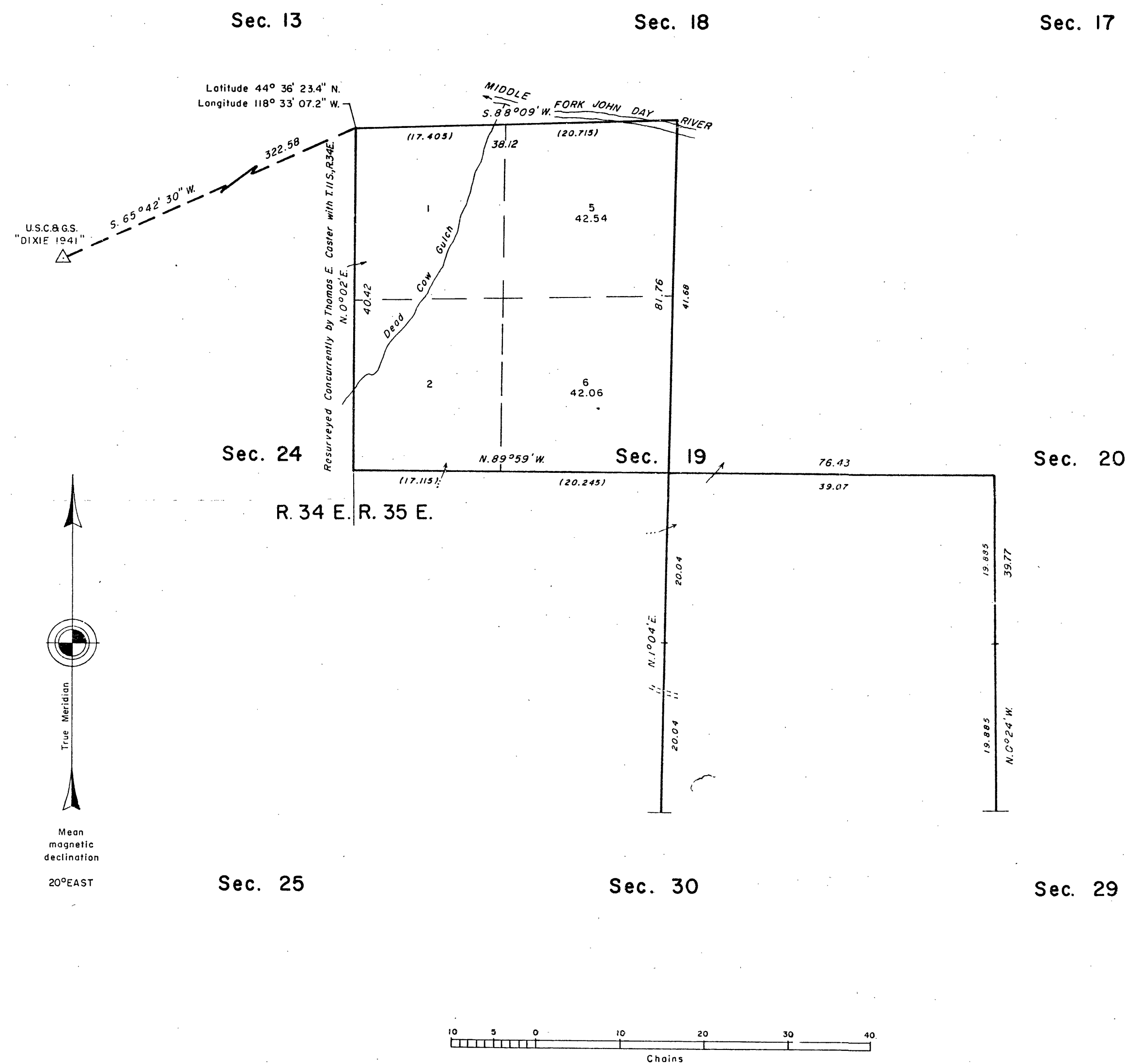


**TOWNSHIP 11 SOUTH, RANGE 35 EAST, OF THE WILLAMETTE MERIDIAN, OREGON**  
**DEPENDENT RESURVEY AND SUBDIVISION OF SECTION 19**



A history of surveys is contained in the field notes.

This plat represents a dependent resurvey of a portion of the subdivisional lines, T. 11 S., R. 35 E., Willamette Meridian, Oregon, and the subdivision of section 19.

Except as shown hereon, the lottings and areas are as shown on the plat approved November 7, 1881.

The survey was executed by Thomas E. Caster, Cadastral Surveyor, beginning May 15, 1984, and completed June 5, 1984, pursuant to Special Instructions dated March 7, 1984, under Group No. 1196, Oregon.

Timber in this area consists of fir, ponderosa pine, lodgepole pine, and larch.

UNITED STATES DEPARTMENT OF THE INTERIOR  
 BUREAU OF LAND MANAGEMENT  
 Portland, Oregon December 14, 1984

This plat is strictly conformable to the approved field notes, and the survey, having been correctly executed in accordance with the requirements of law and the regulations of this Bureau, is hereby accepted.

For the Director

*William W. Glenn*  
 Chief Cadastral Surveyor of Oregon

RECEIVED AND  
 FILED

JAN 7 1985

OFFICE OF COUNTY SURVEYOR

Attest: *Thomas E. Caster*