

OCHOCO NATIONAL FOREST
SAWMILL CADASTRAL SURVEY
CONTRACT NO. 53-04H1-3-9360N
PAULINA RANGER DISTRICT

SURVEY OF LINE BETWEEN SECTIONS 10 AND 11,
TOWNSHIP 14 SOUTH, RANGE 26 EAST, W.M.,
GRANT COUNTY, OREGON
W.O. 83-411D

LEGEND

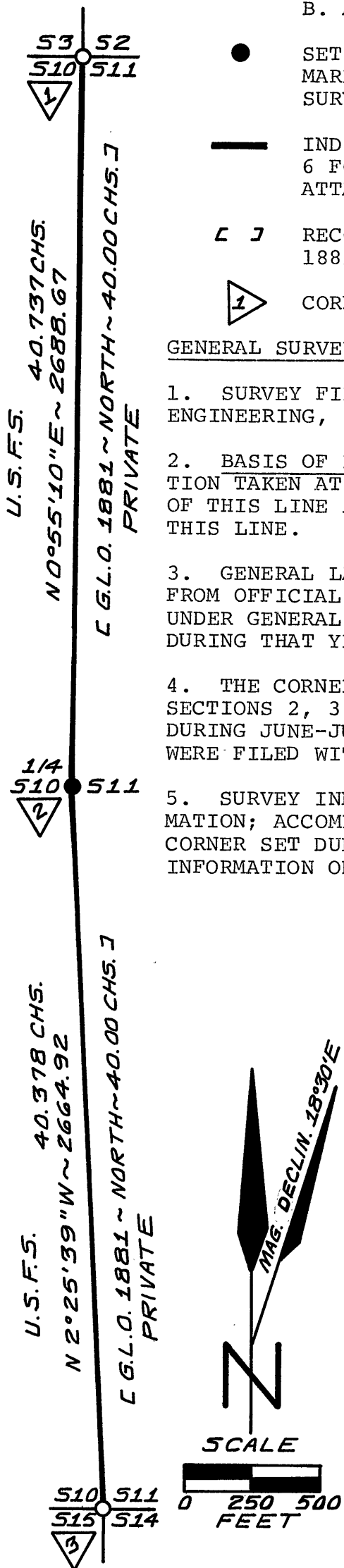
- FOUND 2 1/2" O.D. ALUMINUM PIPE WITH 3 1/4" ALUMINUM CAP BY DAVID B. ARMSTRONG, LS 1026.
- SET A 2 1/2" O.D. X 30" LONG ALUMINUM PIPE WITH 3 1/4" ALUMINUM CAP MARKED AS PER THE B.L.M. MANUAL OF INSTRUCTIONS 1973 DURING THIS SURVEY - CAP MARKINGS SHOWN ON CORNER SUMMARY.
- INDICATES U.S.F.S. PROPERTY BOUNDARY POSTED UNDER THIS CONTRACT WITH 6 FOOT LONG STEEL FENCE POSTS WITH U.S.F.S. PROPERTY BOUNDARY SIGNS ATTACHED (54-2).
- [] RECORD SURVEY INFORMATION, ORIGINAL G.L.O. BY MARK A. FULLERTON IN 1881.
- 1 CORNER MONUMENT NUMBER - SEE SHEET 2 FOR ADDITIONAL INFORMATION.

GENERAL SURVEY NOTES

1. SURVEY FIELD NOTES ARE ON FILE IN THE OFFICE OF ARMSTRONG SURVEYING & ENGINEERING, INC., 378 EAST SECOND STREET, PRINEVILLE, OREGON - ONE BOOK.
2. BASIS OF BEARINGS - BEARINGS FOR THIS SURVEY ARE BASED ON SOLAR OBSERVATION TAKEN AT THE CORNER COMMON TO SECTIONS 10, 11, 14 AND 15 AT THE SOUTH END OF THIS LINE AND VERIFIED BY SOLAR OBSERVATION TAKEN NEAR THE NORTH END OF THIS LINE.
3. GENERAL LAND OFFICE RECORD FOR SUBDIVISION OF T. 14 S., R. 26 E., W.M., FROM OFFICIAL NOTES AND PLAT BY MARK A. FULLERTON, DEPUTY SURVEYOR, PERFORMED UNDER GENERAL LAND OFFICE CONTRACT NO. 395 DATED MAY 25, 1881, AND CONDUCTED DURING THAT YEAR.
4. THE CORNER COMMON TO SECTIONS 10, 11, 14 AND 15 AND THE CORNER COMMON TO SECTIONS 2, 3, 10 AND 11 WERE REMONUMENTED BY DAVID B. ARMSTRONG, LS 1026, DURING JUNE-JULY, 1982, AND CERTIFIED RECORDS OF LAND CORNER MONUMENTATION WERE FILED WITH THE GRANT COUNTY SURVEYOR ON SEPTEMBER 3, 1982.
5. SURVEY INFORMATION - SEE ACCOMPANYING SHEET OF CORNER ACCESSORY INFORMATION; ACCOMPANYING CERTIFIED RECORD OF LAND CORNER MONUMENTATION FOR THE CORNER SET DURING THIS SURVEY; AND ATTACHED SURVEY NARRATIVE FOR ADDITIONAL INFORMATION ON PROCEDURES AND/OR CONDITIONS ENCOUNTERED DURING THIS SURVEY.

SURVEYOR'S CERTIFICATION

I, DAVID B. ARMSTRONG, A REGISTERED PROFESSIONAL LAND SURVEYOR IN THE STATE OF OREGON, ON THE BASIS OF MY KNOWLEDGE, INFORMATION, AND BELIEF, CERTIFY THAT THIS PLAT, SURVEY NARRATIVE AND CERTIFIED CORNER RECORDS AND/OR NOTES ARE A CORRECT REPRESENTATION OF A SURVEY PERFORMED DURING AUGUST-SEPTEMBER, 1984, AT THE REQUEST OF THE U.S.D.A., FOREST SERVICE, IN ACCORDANCE WITH STATUTES OF THE STATE OF OREGON AND ARTICLES OF CONTRACT NO. 53-04H1-3-9360N WITH ARMSTRONG SURVEYING & ENGINEERING, INC..



RECORDATION

OFFICE OF COUNTY SURVEYOR, COUNTY OF GRANT, STATE OF OREGON. I HEREBY CERTIFY THAT THE WITHIN INSTRUMENT WAS FILED FOR RECORD ON THE 23 DAY OF NOV., 1984.

Robert D. Sager
GRANT COUNTY SURVEYOR

ARMSTRONG SURVEYING & ENGINEERING, INC.
378 EAST SECOND STREET
PRINEVILLE, OREGON 97754
PHONE (503) 447-7791

SHEET 1 OF 2

REGISTERED
PROFESSIONAL
LAND SURVEYOR

David B. Armstrong
11/7/84 OREGON
AUGUST 22, 1973
DAVID B. ARMSTRONG
1026

W.O. 83-411D

MAP OF SURVEY NO. 845