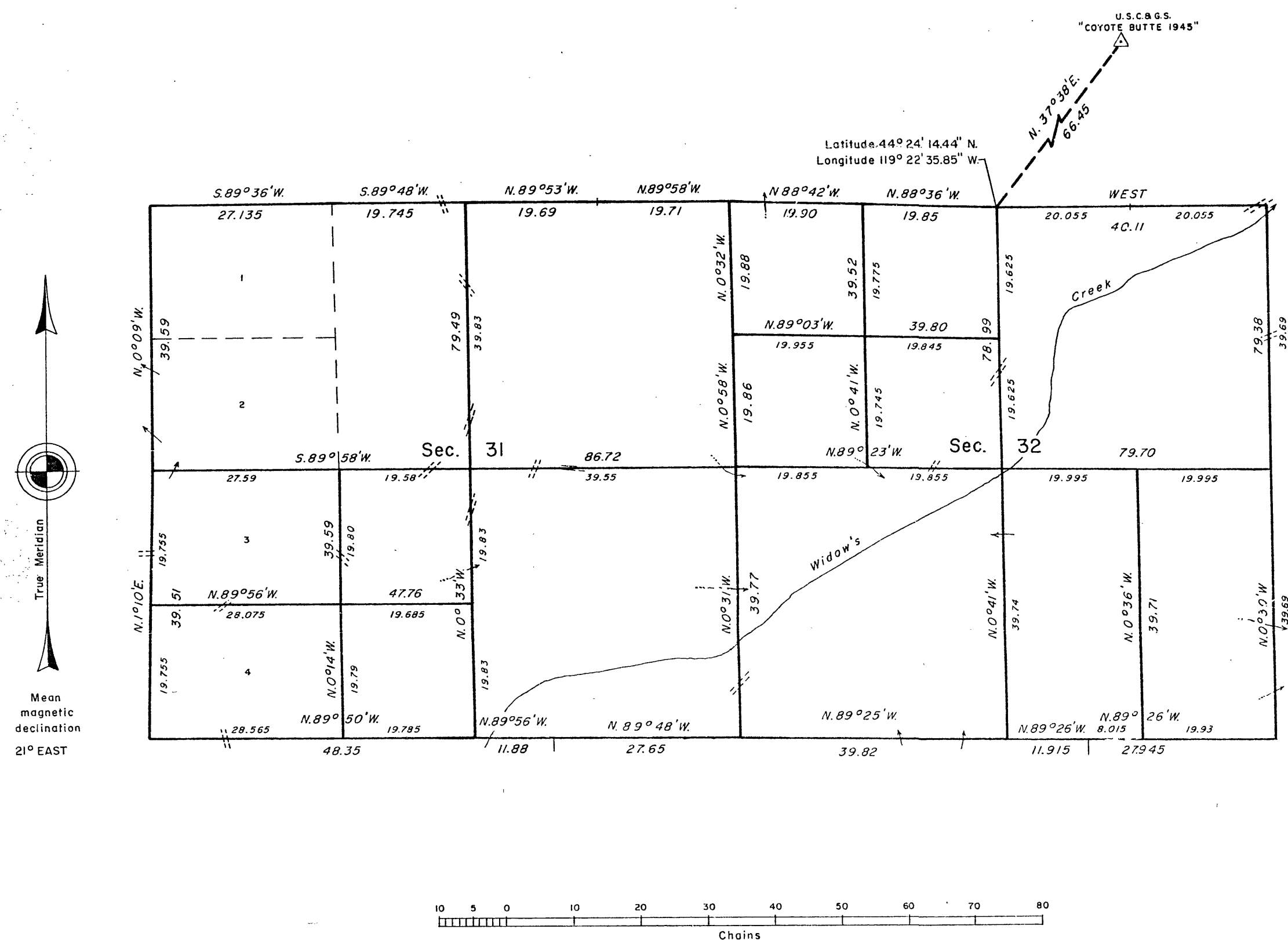


TOWNSHIP 13 SOUTH, RANGE 28 EAST, OF THE WILLAMETTE MERIDIAN, OREGON

DEPENDENT RESURVEY, CORRECTIVE DEPENDENT RESURVEY, AND SUBDIVISION OF SECTIONS



A history of surveys is contained in the field notes.

This plat represents a dependent resurvey of a portion of the south and west boundaries and subdivisional lines, and the corrective dependent resurvey of the east one-half mile between sections 29 and 32, T. 13 S., R. 28 E., Willamette Meridian, Oregon, designed to restore the corners in their true original locations according to the best available evidence, and the subdivision of sections 31 and 32.

The lottings and areas are as shown on the plat approved March 31, 1874.

The survey was executed by Scott R. McIntyre, Cadastral Surveyor, beginning June 17, 1982, and completed August 10, 1982, pursuant to Special Instructions dated June 14, 1982, and Instruction Memorandum dated August 10, 1982, for Group No. 1112, Oregon.

Timber in this area consists of juniper, pine, and fir.

UNITED STATES DEPARTMENT OF THE INTERIOR
BUREAU OF LAND MANAGEMENT
Portland, Oregon September 28, 1984

This plat is strictly conformable to the approved field notes, and the survey, having been correctly executed in accordance with the requirements of law and the regulations of this Bureau, is hereby accepted.

For the Director

William W. Glenn

Chief Cadastral Surveyor of Oregon

RECEIVED AND
FILED

NOV 23 1984

OFFICE OF COUNTY SURVEYOR

Robert D. Begett
Attest: *Carol Van Dyke* Co. Clk.