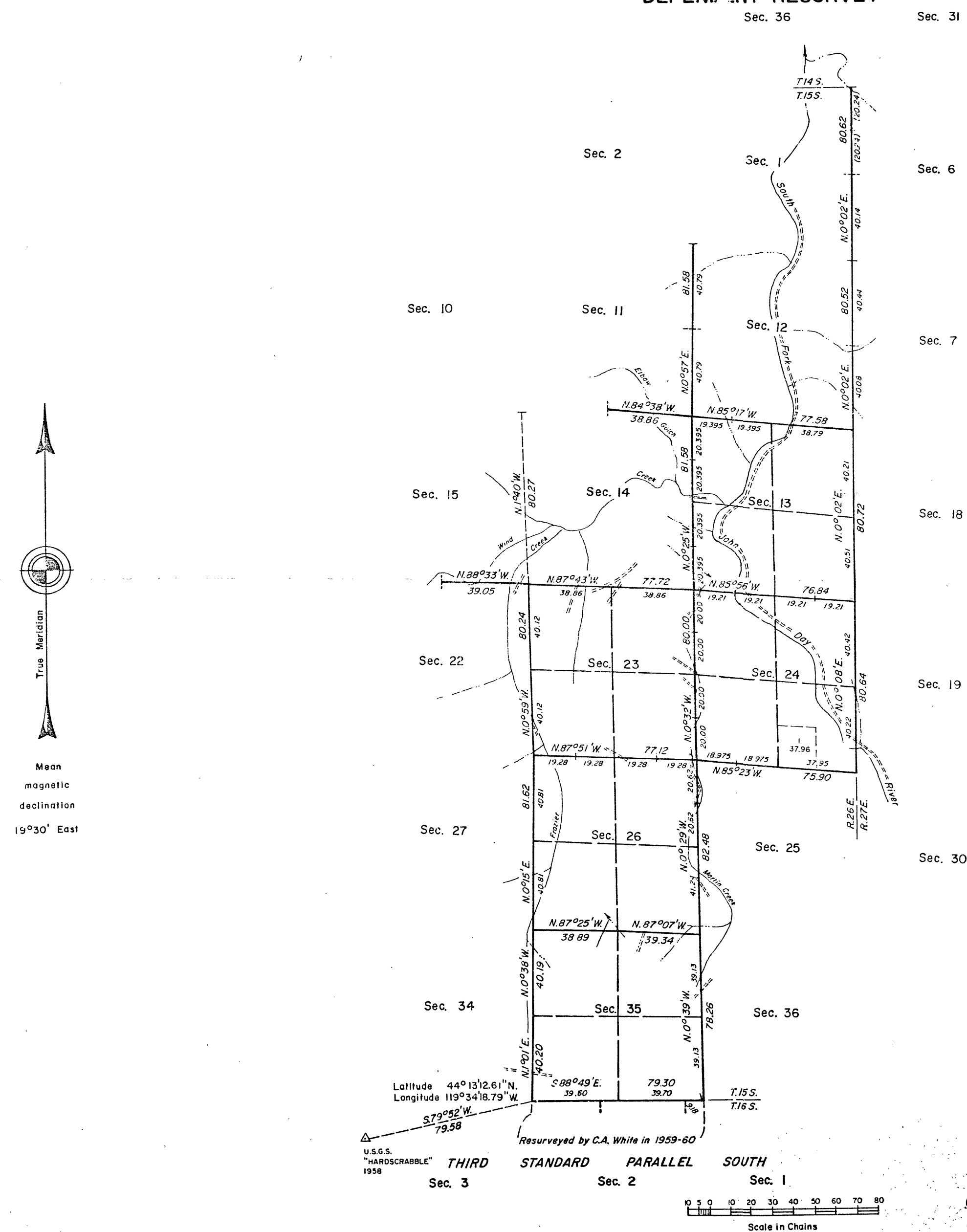


TOWNSHIP 15 SOUTH, RANGE 26 EAST, OF THE WILLAMETTE MERIDIAN, OREGON.

DEPENDENT RESURVEY



A history of surveys is contained in the field notes.

This plat represents a dependent resurvey of a portion of the east boundary and subdivisional lines, T. 15 S., R. 26 E., Willamette Meridian, Oregon, designed to restore the corners in their true original locations according to the best available evidence.

The lottings and areas are as shown on the plat approved March 7, 1882.

The survey was executed by Thomas E. Casinger and Rick E. Tawney, Cadastral Surveyors, beginning September 30, 1980, and completed June 12, 1981, pursuant to Special Instructions dated September 19, 1980, for Group No. 1041, Oregon.

Timber in this area consists of pine, fir, juniper, and willow.

UNITED STATES DEPARTMENT OF THE INTERIOR
BUREAU OF LAND MANAGEMENT
Portland, Oregon May 25, 1984

This plat is strictly conformable to the approved field notes, and the survey, having been correctly executed in accordance with the requirements of law and the regulations of this Bureau, is hereby accepted.

For the Director

William W. Glenn

Chief Cadastral Surveyor of Oregon

RECEIVED AND
FILED

JUL 20 1984

OFFICE OF COUNTY SURVEYOR

Robert D. Beyer
Attest: *Carol A. Cocek*