

NOTES

FOR ADDITIONAL INFORMATION ON CORNERS SEARCHED AND MONUMENTED SEE FORMS RW-7100-57 AND FSM 7191.4 FILED HEREWITH.

FIELD BOOK REFERENCE - TRAVERSE BOOKS 5, 6, AND 7, OF THE GREENHORN MINES CADASTRAL SURVEY.

① - HAMBLETON'S MONUMENT FOR COR A-4 BEARS S32°02'W-7.1' FROM FOUND AND MONUMENTED ORIGINAL CORNER. HAMBLETON'S MONUMENT FOR THE INTERSECTION OF THE WEST LINE OF ACCIDENTAL NO. 2 AMENDED AND THE EAST LINE OF ALTONA BEARS S29°58'W-1.1' FROM TRUE INTERSECTION - REMONUMENTED HAMBLETON'S POSITION.

② - HAMBLETON'S MONUMENT FOR GR COR 1 BEARS N28°53'E-9.5' FROM MONUMENTED CORNER SET BY THIS SURVEY.

③ - HAMBLETON'S MONUMENT FOR THE INTERSECTION BEARS S83°16'W-13.1' FROM MONUMENTED INTERSECTION SET BY THIS SURVEY.

④ - HAMBLETON'S MONUMENT FOR THE INTERSECTION BEARS N16°55'W-9.3' FROM MONUMENTED INTERSECTION SET BY THIS SURVEY.

⑤ - HAMBLETON'S MONUMENT FOR GR COR 2 BEARS S37°19'W-1.5' FROM FOUND AND MONUMENTED ORIGINAL CORNER.

⑥ - HAMBLETON'S MONUMENT BEARS S 5 1/2°W-3' FROM CORNER POSITION OF A-COR 2 MONUMENTED BASED ON FOUND ORIGINAL BEARING TREE.

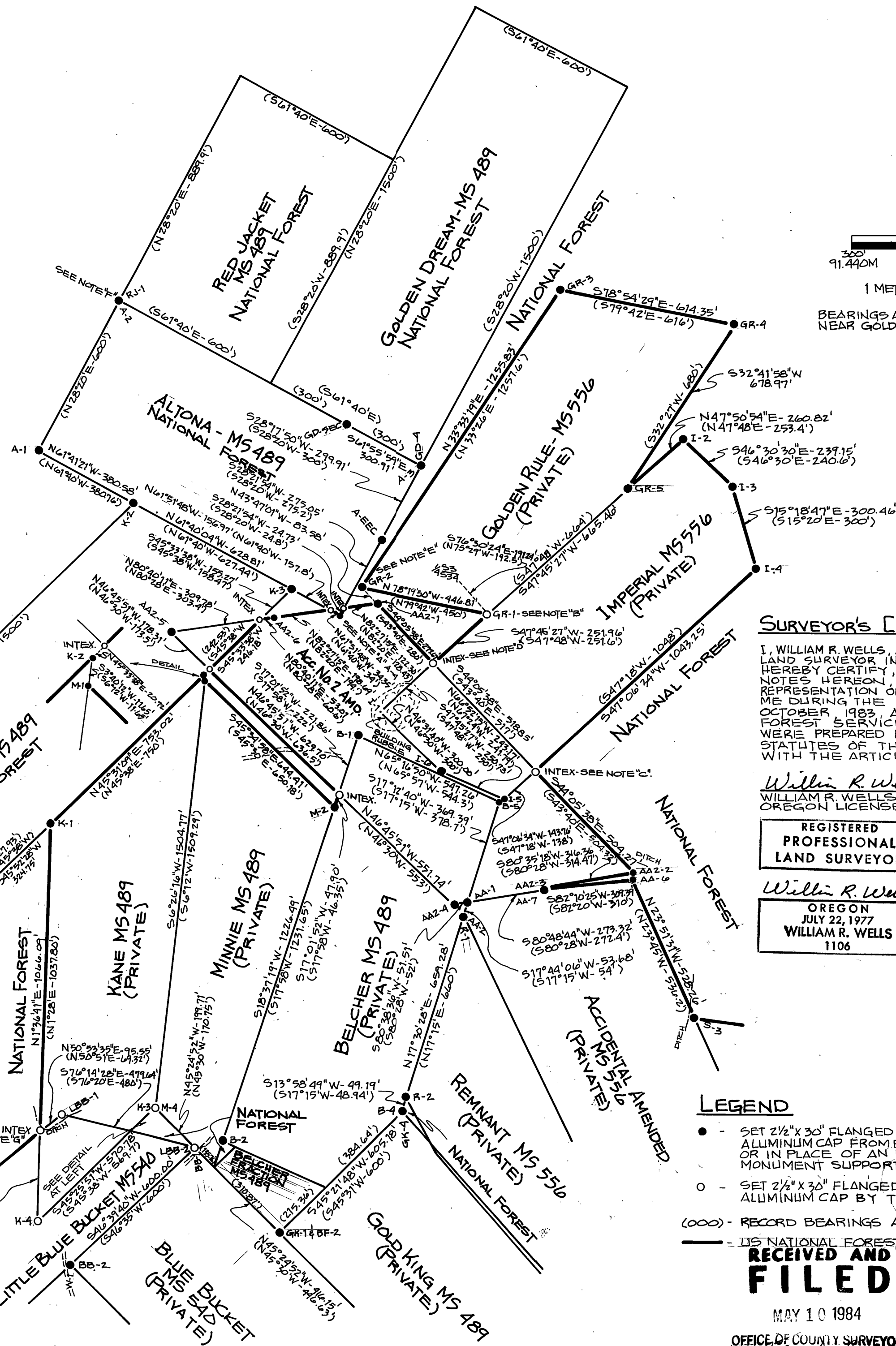
⑦ - HAMBLETON'S MONUMENT FOR THE INTERSECTION BEARS N63°07'E-51.0' FROM MONUMENTED INTERSECTION SET BY THIS SURVEY.

SEE SHEET #2 FOR NARRATIVE OF SURVEY.

AREAS:

AAZ-2 TO AAZ-3 TO AA-6 TO AAZ-2 = 0.0311 ACRES.
I-2 TO GR-4 TO GR-5 TO I-2 = 0.931 ACRES.
GR-2 TO GR-1 TO INTERSECTION TO AAZ-1 TO GR-2 = 1.046 ACRES.
A-4 TO INTERSECTION TO INTERSECTION TO A-4 = 0.010 ACRES.
BB-1 TO M-4 TO INTERSECTION TO BB-1 = 0.276 ACRES.
K-2 TO M-1 TO M-2 TO INTERSECTION TO INTERSECTION TO K-2 = 0.931 ACRES.

CLOSING BEARINGS FOR AREAS:
AA-6 TO AAZ-2 - N 30°12'16"E-11.11'
I-2 TO GR-4 - N 23°38'04"E-432.62'
AAZ-1 TO GR-2 - N 43°47'01"W-83.58'
INTERSECTION TO INTERSECTION (NEAR A-4) - N 82°21'17"E-42.40'
K-2 TO INTERSECTION - N 45°33'38"E-20.72'



SURVEYOR'S CERTIFICATION

I, WILLIAM R. WELLS, A REGISTERED PROFESSIONAL LAND SURVEYOR IN THE STATE OF OREGON, HEREBY CERTIFY, THAT THIS PLAT AND THE NOTES HEREON, OR ATTACHED, ARE A CORRECT REPRESENTATION OF A SURVEY PERFORMED BY ME DURING THE MONTHS OF SEPTEMBER AND OCTOBER 1983, AT THE REQUEST OF THE USDA, FOREST SERVICE. SAID PLAT AND NOTES WERE PREPARED IN ACCORDANCE WITH THE STATUTES OF THE STATE OF OREGON AND WITH THE ARTICLES OF THE CONTRACT.

William R. Wells
WILLIAM R. WELLS, PLS
OREGON LICENSE NO. 1106

REGISTERED
PROFESSIONAL
LAND SURVEYOR

William R. Wells
OREGON
JULY 22, 1977
WILLIAM R. WELLS
1106

LEGEND

- SET 2 1/2" X 30" FLANGED ALUMINUM PIPE WITH 2 1/2" ALUMINUM CAP FROM EXISTING ORIGINAL EVIDENCE OR IN PLACE OF AN EXISTING SUBSTANDARD MONUMENT SUPPORTED BY ORIGINAL EVIDENCE.
- SET 2 1/2" X 30" FLANGED ALUMINUM PIPE WITH 2 1/2" ALUMINUM CAP BY TRAVERSE SURVEY.

(000) - RECORD BEARINGS AND DISTANCES.

— US NATIONAL FOREST BOUNDARY - BOUNDARY POSTED.

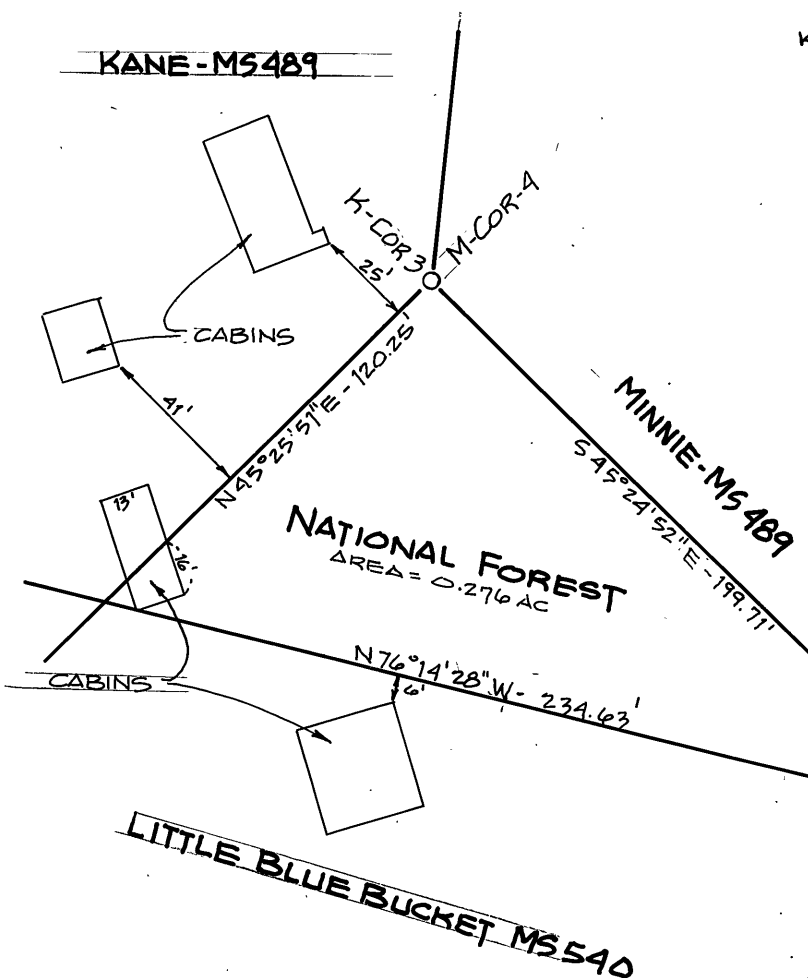
**RECEIVED AND
FILED**

MAY 10 1984

OFFICE OF COUNTY SURVEYOR

Robert W. Smith
Attest: *James E. Sanderson*

KANE-MS489



DETAIL SHOWING BUILDINGS
NEAR MINNIE COR. 4
SCALE: 1" = 50'

NOTE: BUILDINGS WERE TIED WITH STAFF COMPASS AND CHAIN FROM M-COR. 4.

MATCH TO SHEET #2

WALLULIS PROJECT NO:

AGENCY PROJECT NO:

PROJECT:

GREENHORN MINES
CADASTRAL SURVEY
WALLOWA-WHITMAN
NATIONAL FOREST
LOCATED IN SECTION 34, T9S
R.35E, W.M.1 AND SECTION
3, T10S, R.35E, W.M.1, GRANT
COUNTY, OREGON.

WALLULIS & ASSOCIATES, INC
ENGINEERING & PLANNING

SCALE: 1" = 300'

DATE: 12-22-83

DES BY:

DR BY: W/RW

CK BY: W/RW

TITLE:
MS 489
MS 540
MS 556
MS 636

REVISIONS

DRAWING:

SHEET 1 OF 2

MAP OF SURVEY NO. 811