

Scale 1"=500'

NARRATIVE: This survey was performed at the request of Dave Stout to delineate the tract of land shown hereon which he intends to acquire from his parents, the present owners.

A search was made of the available records pertaining to this survey. Field measurements were made to locate existing monuments. New monuments were set in accordance with the evidence found as shown hereon.

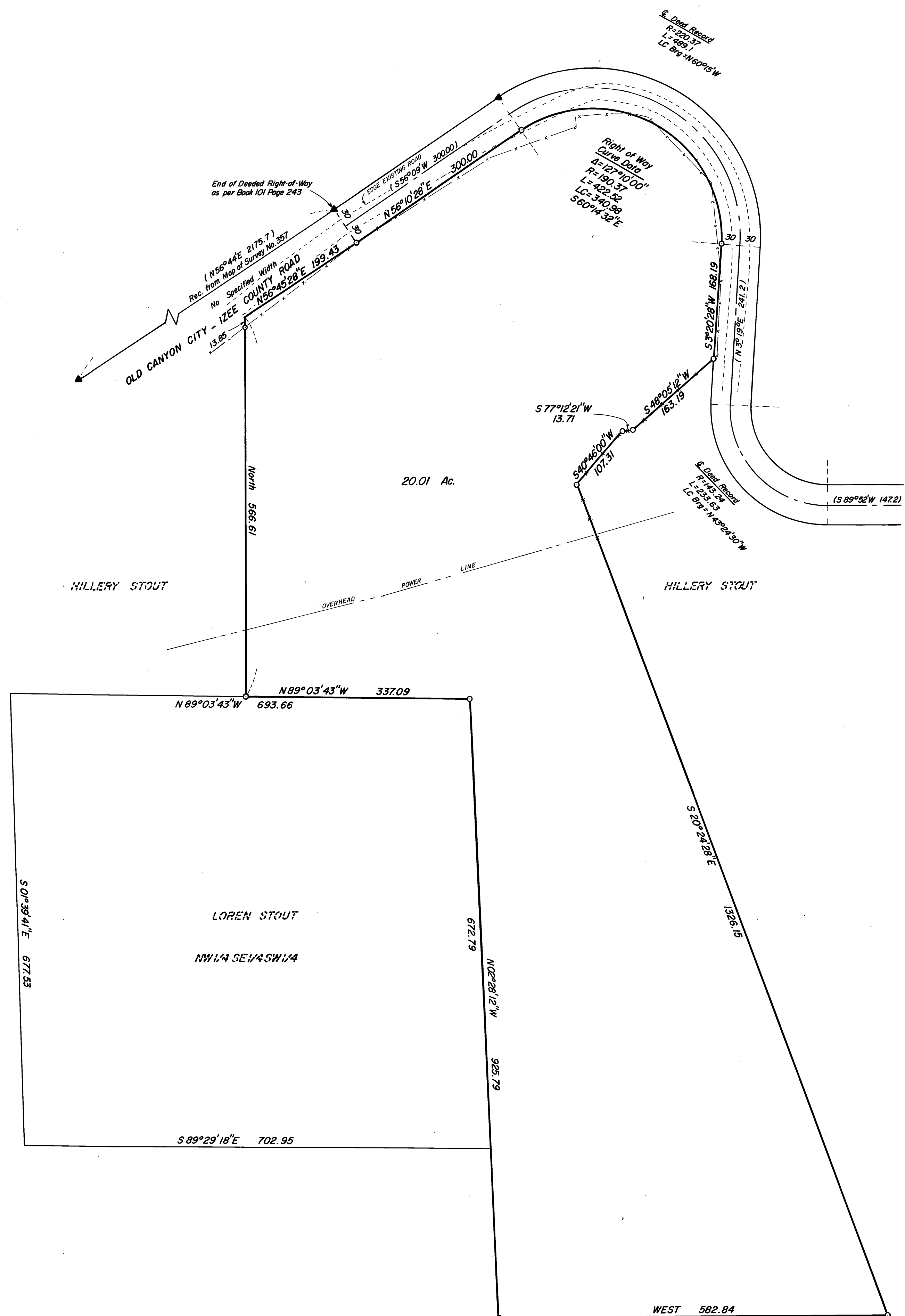
It was necessary to subdivide the southwest 1/4 of section 2 to determine the location of a portion of the westerly boundary of this tract as it borders the north and west line of the NW 1/4 SE 1/4 SW 1/4 which is owned by Loren Stout.

All the section corners and 1/4 section corners controlling the location of the SW 1/4 were found with the exception of the west 1/4 corner. After detailed research and a diligent search on the ground without finding the record monument, I declared it lost. I established the West 1/4 corner at single proportionate measure between the found monument at the SW corner of the section and the closing corner monument between sections 2 and 3. The SW corner of this section was set at proportionate distance by Michael Spears, Grant County Surveyor, in June 1909 recorded in Surveyors Record Book No. 1, Page 28. This corner was remonumented by the BLM in 1968. The closing corner is the original GLO stone monument which Spears measured to and which I remonumented, (see filed corner monumentation records). Owing to a discrepancy of 2.79 chains between Spears' measurement and the GLO measurement on the west line of section 2, I am bound to use Spears measurement for the proportionate position of the W 1/4 corner instead of the GLO measure. Spears 59.21 chains, GLO 56.42 chains, My measurement 59.0124 chains.

Spears used GLO record of 56.60 chains on the west line of section 2. The GLO record available to me indicates 56.42 chains. Spears' proportionate half miles are 41.80 chains which I used for the record distance between the SW corner section 2 and the W 1/4 corner to calculate my proportionate position of the W 1/4 corner. W.F. White, County Surveyor, set a 16x12x8 inch stone for the closing corner between sections 2 and 3 in 1896. As per Surveyors Record Book B, Page 19. He then ran south GLO record bearing and distance and set a 8x20x24 inch stone for the 1/4 corner between section 2 and 3, same Book and Page. Then in 1897 he apparently found the original closing corner stone between sections 2 and 3 which he described as being a marked stone 24x22x14 inches, Surveyors Record Book 1, Page 50. He says nothing further about either the closing corner or the 1/4 corner which he previously had set.

REGISTERED
PROFESSIONAL
LAND SURVEYOR

ROBERT D. BAGETT
JULY 12, 1983
598



BASIS OF BEARINGS
MAP OF SURVEY NO. 532

LEGEND

- Found Grant County Surveyor Brass Cap
- Found BLM Brass Cap
- ✕ Found 1-1/2" pipe driven into a 2" pipe
- ▲ Found 1/2" iron pin as per survey no. 357
- Found Grant County Surveyor Brass Disc grouted in bedrock
- ⊙ Set 1-1/2"x30" iron pipe with brass cap
- Set 5/8"x30" iron pin with attached yellow plastic cap marked B-G-A SURVEY MARKER
- x — x Fence line
- () Deed Record bearing and distance

REFERENCES

Record Map of Survey No.'s 357, 532, 684
Deed Record Book 101 Page 243
110 980
123 551
Surveyors Record Book 1 Page 28
1 50
B 19
GLO Field Notes

**RECEIVED AND
FILED**

APR 9 1984

OFFICE OF COUNTY SURVEYOR
Robert D. Bagett
Attest: [Signature]

BAGETT - GRIFFITH & ASSOCIATES
John Day, Oregon

Map of Survey
A tract of land situated in
SW 1/4 Section 2, T14S, R31E, W.M.
GRANT COUNTY, OREGON
SURVEYED FOR DAVE STOUT
SURVEYED BY R.D.B. & J.L.W. 3/21/84
Scale: 1"=100' Drawn by: J.L.W. 3/22/84

RECORD MAP OF SURVEY NO. 805