

MAY 13 1983

Attest: *Samia L. Lawrence*

Robert D Baggett

OREGON
JULY 12, 1963
ROBERT D. BAGETT
598

BASIS OF BEARINGS

SOLAR OBSERVATION

LEGEND

- Found Grant County Surveyor Brass Cap
- Found 5/8" iron pin as shown
- Set 5/8" x 30" iron pin with attached yellow plastic cap marked B-G-A SURVEY MARKER

REFERENCES

Map of survey no. 160,161,310,545,676,761

See recorded remonumentation sheets for section and 1/4 section corner information.



BAGETT - GRIFFITH & ASSOCIATES
John Day, Oregon

MAP OF SURVEY
OF THE
S1/2SE1/4NW1/4 SECTION 21, T13S, R31E, WM

GRANT COUNTY, OREGON

SURVEYED FOR	<i>BILL PATTERSON</i>
--------------	-----------------------

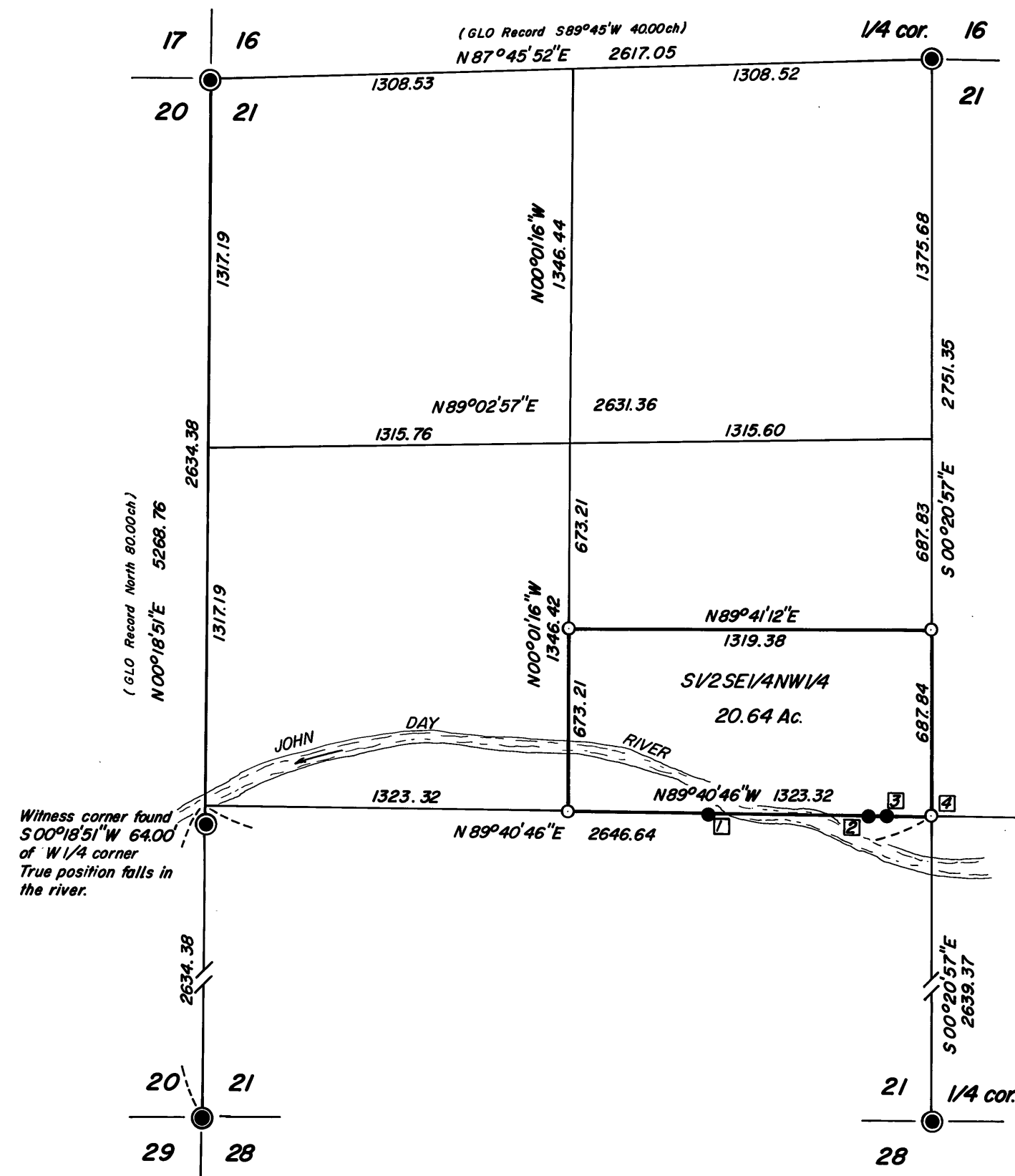
SURVEYED BY	<i>R.D.B. & J.L.W.</i>
-------------	----------------------------

4/8/83

Scale: $1'' = 500'$ Drawn by: J.L.W.

4/12/83

MAP OF SURVEY NO. 767



- ⑦ Found 5/8" iron pin N 89°40'46" W B16.24' from C1/4 cor. and 0.95' North of the South line NW 1/4
- ⑧ Found 5/8" iron pin N 89°40'46" W 226.25' from C1/4 cor. and 1.22' North of the South line NW 1/4
- ⑨ Found 5/8" iron pin N 89°40'46" W 161.71' from C1/4 cor. and 1.09' South of the South line NW 1/4
- ⑩ No monument found at the center of section 21 due to construction by heavy equipment.

PORTLAND PRECISION INSTRUMENT