

SURVEY FOR
U.S. FOREST SERVICE
GIMLET OLIVE CADASTRAL
CONTRACT NO. 53-04M3-2-2789
SECTION 35, T9S, R35E, W.M.
GRANT COUNTY, OREGON

PAGE 1 OF 2

SCALE 1" = 500'
500 0 500
152.40 M 152.40 M
1 METER = 3.28083 ft.

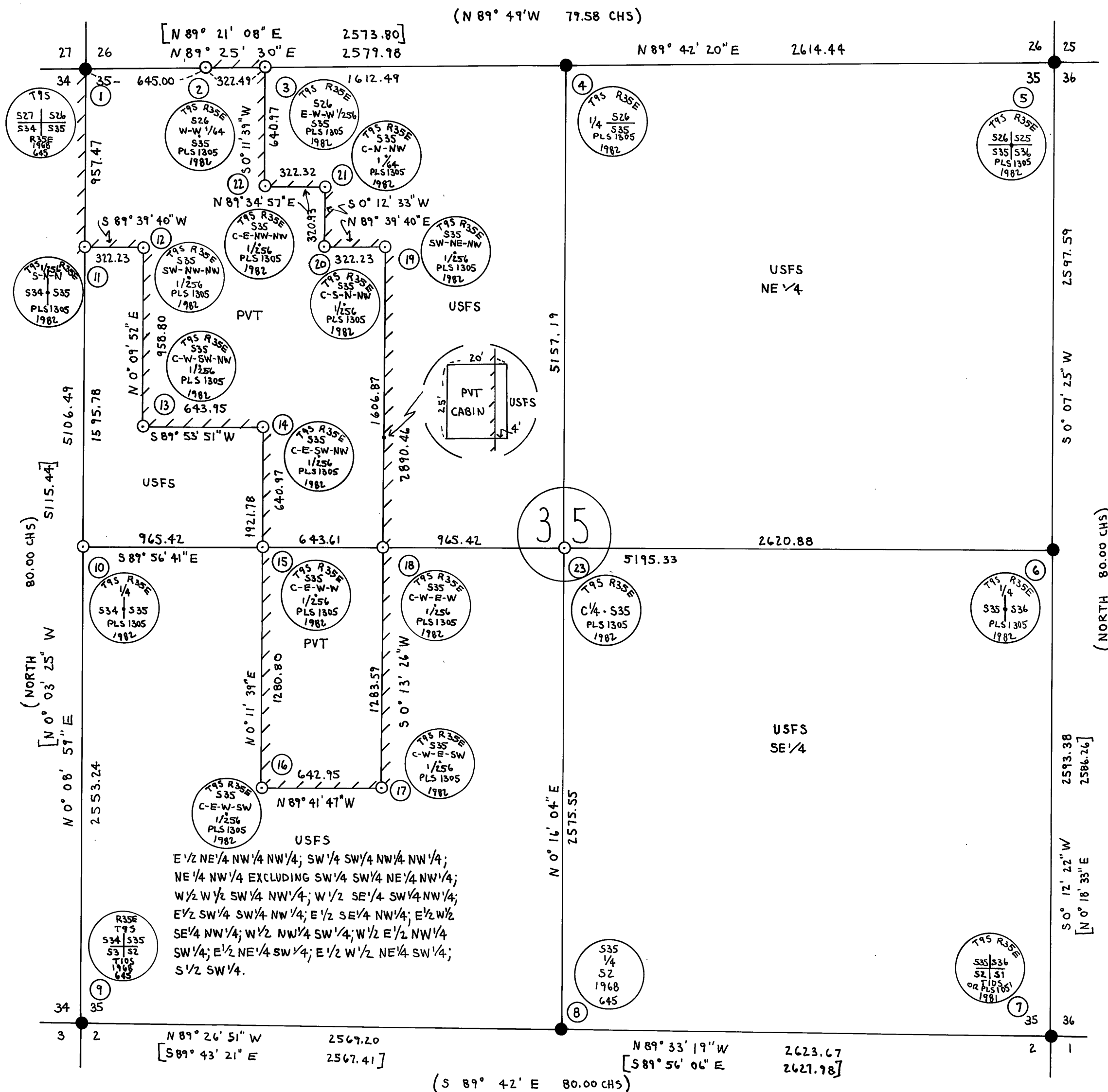
NOVEMBER 24, 1982

Bearings from
solar observation



LEGEND

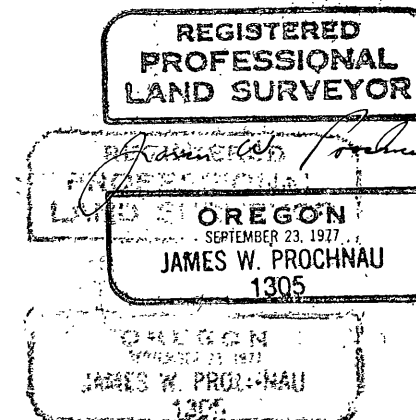
- CORNER EVIDENCE FOUND
- CORNER SET BY SURVEY
- PROPERTY LINE POSTED WITH 6 FT. STEEL POSTS AND USFS SIGNS 54-2
- [] BEARINGS AND DISTANCES OF RECORD BY JAMES HAMBLETON CS 486 1977
- () BEARINGS AND DISTANCES OF RECORD FROM ORIGINAL GLO SURVEY



NARRATIVE: THIS SURVEY IS A CLOSED TRAVERSE BY T-16 THEODOLITE AND DI-4 EDM, AND T-1 THEODOLITE AND 300 FT. TAPE, MADE BY JACKSON AND PROCHNAU, INC. P.O. BOX 177 ALBANY, OREGON 97321. BASIS OF BEARINGS IS A SOLAR OBSERVATION. THE TOWNSHIP EXTERIOR AND SUBDIVISIONAL LINES WERE ORIGINALLY SURVEYED BY HERMAN D. GRADON IN 1884. A SUBDIVISION OF THE SECTION WAS DONE BY JAMES HAMBLETON, LS 645, IN 1968. HAMBLETON'S SUBDIVISIONAL CORNERS WERE FOUND TO BE OUT OF POSITION AND THE TRUE POSITION OF THESE CORNERS WERE MONUMENTED BY THIS SURVEY. THE NORTH WEST CORNER (COR. NO. 1) WAS SET BY HAMBLETON FROM MINING CLAIM TIES AND FOUND TO BE IN THE CORRECT POSITION. THE WEST 1/4 (COR. NO. 10) WAS SET BY PROPORTIONAL MEASURE BY THIS SURVEY FOLLOWING A THOROUGH SEARCH OF THE AREA.

"I, JAMES W. PROCHNAU, A REGISTERED LAND SURVEYOR IN THE STATE OF OREGON, HEREBY CERTIFY THAT THIS PLAT AND THE NOTES HEREON, OR ATTACHED, ARE A CORRECT REPRESENTATION OF A SURVEY I PERFORMED DURING JUNE-NOVEMBER 1982 FOR THE U.S. FOREST SERVICE, IN ACCORDANCE WITH THE STATUTES OF THE STATE OF OREGON AND WITH THE ARTICLES OF MY CONTRACT."

JAMES W. PROCHNAU
P.L.S. 1305, OREGON



RECEIVED AND
FILED

JAN 25 1983

OFFICE OF COUNTY SURVEYOR
Attest: *[Signature]*

MAP OF SURVEY NO. 747