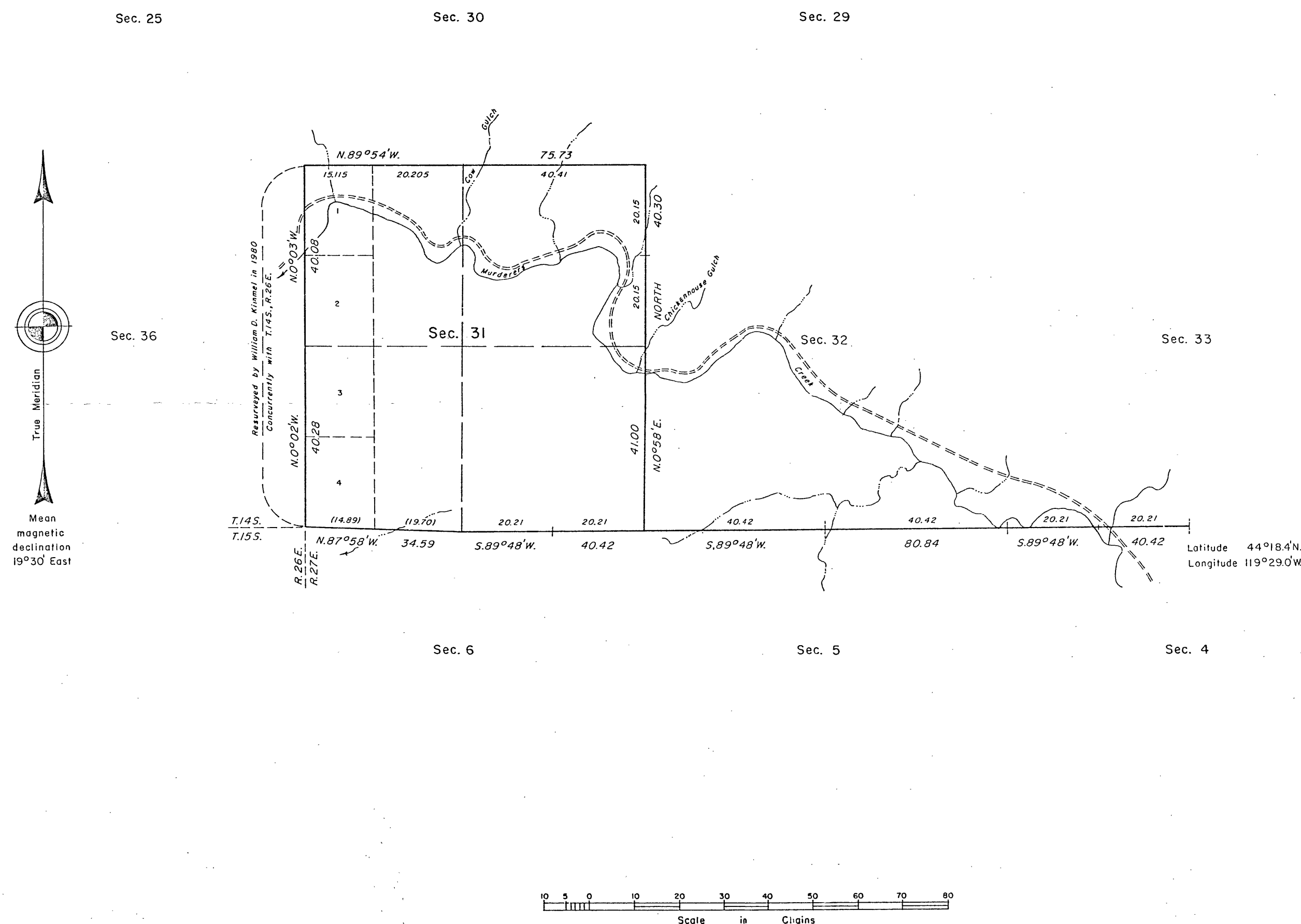


## TOWNSHIP 14 SOUTH, RANGE 27 EAST, OF THE WILLAMETTE MERIDIAN, OREGON.

DEPENDENT RESURVEY



A history of surveys is contained in the field notes.

This plat represents a dependent resurvey of a portion of the south boundary and subdivisional lines designed to restore the corners in their true original locations according to the best available evidence, T. 14 S., R. 27 E., Willamette Meridian, Oregon.

The lottings and areas are as shown on the plat approved March 10, 1882.

Survey executed by William D. Kimmel, Cadastral Surveyor, beginning April 2, 1980, and completed May 9, 1980, pursuant to Special Instructions dated February 27, 1980, for Group No. 1013 Oregon.

Timber in this area consists of juniper, pine, and fir.

UNITED STATES DEPARTMENT OF THE INTERIOR  
BUREAU OF LAND MANAGEMENT  
Portland, Oregon August 26, 1982

This plat is strictly conformable to the approved field notes, and the survey, having been correctly executed in accordance with the requirements of law and the regulations of this Bureau, is hereby accepted.

For the Director

William W. Glenn

Chief Cadastral Surveyor of Oregon

RECEIVED AND  
FILED

SEP 22 1982

OFFICE OF COUNTY SURVEYOR

Attest: *[Signature]*

MAP OF SURVEY NO. 731