

NOTE:

Found scribed post, loose, leaning against tree 13± feet Westerly of proportionate position. I feel that the post is disturbed from its original position. I therefore use the proportionate position as shown.

NOTE:

Searches were made at every 40.18 chains for section and 1/4 section corners. A post with pits and a mound of earth was originally set. None were found(except as noted).

BASIS OF BEARING

A.M. and P.M. Solar observation taken at a point 850 feet East of the Northwest corner of Section 32

	AM	PM
Date	9/11/81	9/10/81
Mean vert. angle	21°36'34"	24°49'31"
Mean declination	4°25'56"	4°40'54"
Mean horiz. angle	165°16'13"	340°14'39"

Latitude	44°08'55"
Magnetic declination	20° East

LEGEND

- Found aluminum monument set by survey number 710 as filed in the office of the Grant County Surveyor
- ⊙ Set 2 1/2"x30" aluminum pipe with aluminum cap at proportionate distance
- () Record bearing and distance from G.L.O. field notes

NOTE:

For monumentation information, see monumentation sheets filed separately.

NARRATIVE: This survey was ordered by the MALHEUR NATIONAL FOREST. Our firm had previously traversed from the southwest corner of section 30 to the west 1/4 corner of section 6 Township 16 South, Range 32 East, under forest service contract during the fall of 1981. I located the control at the said west 1/4 corner of section 6, and traversed to the positions as marked, and closed back to the beginning. I set the monuments at the single proportionate positions as shown. I find no unusual problems with this survey.

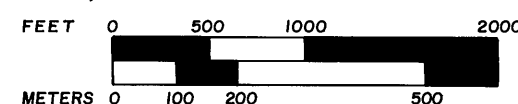
SURVEYOR'S STATEMENT

I, Gregory T. Blackman, Registered Land Surveyor in the State of Oregon, hereby certify that this plat and the notes hereon, or attached are a true and correct representation of the survey I made during May, 1982, for the U.S. Forest Service in accordance with the statutes of the State of Oregon and with the articles of my contract.

The positions of the monuments set by this survey were established by single proportion from the found monuments to the North and South as shown. These monuments were set by survey number 710.

Gregory T. Blackman
 Gregory T. Blackman
 Bagett, Griffith and Associates
 P.O. Box 576
 La Grande, OR 97850

Scale: 1" = 1000'



1 meter = 3.2808333 feet

REGISTERED
PROFESSIONAL
LAND SURVEYOR

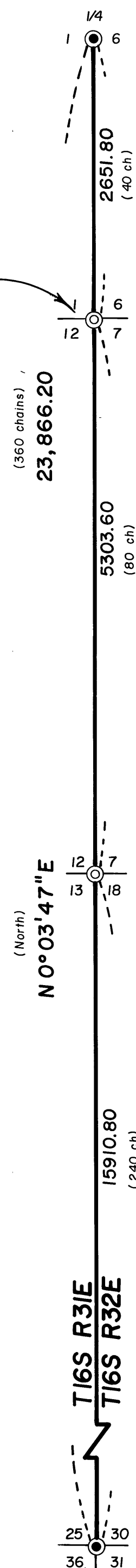
Gregory T. Blackman
 OREGON
 JULY 13, 1973
 GREGORY T. BLACKMAN
 991

RECEIVED AND
FILED

JUN 8 1982

OFFICE OF COUNTY SURVEYOR

Robert D. Baggett
 Robert D. Baggett



BAGETT - GRIFFITH & ASSOCIATES La Grande, Oregon Map of Survey		
Survey in Township 16 South, between Ranges 31 and 32 East of the Willamette Meridian GRANT COUNTY, OREGON		
SURVEYED FOR	Malheur National Forest	
SURVEYED BY	g.t.b. - d.i.g. - r.g.r.	5/82
Scale: 1" = 1000'	Drawn by: r.g.r.	5/82