

NOTE:

Searches were made at every 40.18 chains for section and 1/4 section corners. A post with pits and a mound of earth was originally set. None were found.

BASIS OF BEARING

A.M. and P.M. Solar observation taken at a point 850 feet East of the Northwest corner of Section 32

Date	A.M.	P.M.
9/11/81	9/10/81	
Mean vert angle	21°36'34"	24°49'31"
Mean declination	4°25'56"	4°40'54"
Mean horiz. angle	165°16'13"	340°14'39"

Latitude 44°08'55"
Magnetic declination 20° East

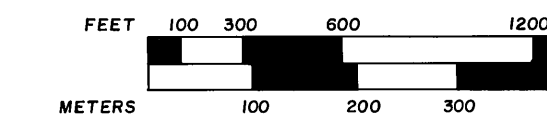
LEGEND

- Found 1" iron pipe with 2" brass cap set by OPLS 848
- ⊙ Found aluminum monument set by Forest Service
- ⊙ Found original G.L.O. corner evidence, set 2 1/2" x 30" aluminum pipe with aluminum cap
- ⊙ Set 2 1/2" x 30" aluminum pipe with aluminum cap at proportionate distance
- () Record bearing and distance from G.L.O. field notes
- National Forest Boundary, posted
- NF National Forest lands
- P Privately owned lands

Note:

For monumentation information, see monumentation sheets filed separately.

Scale: 1" = 600'



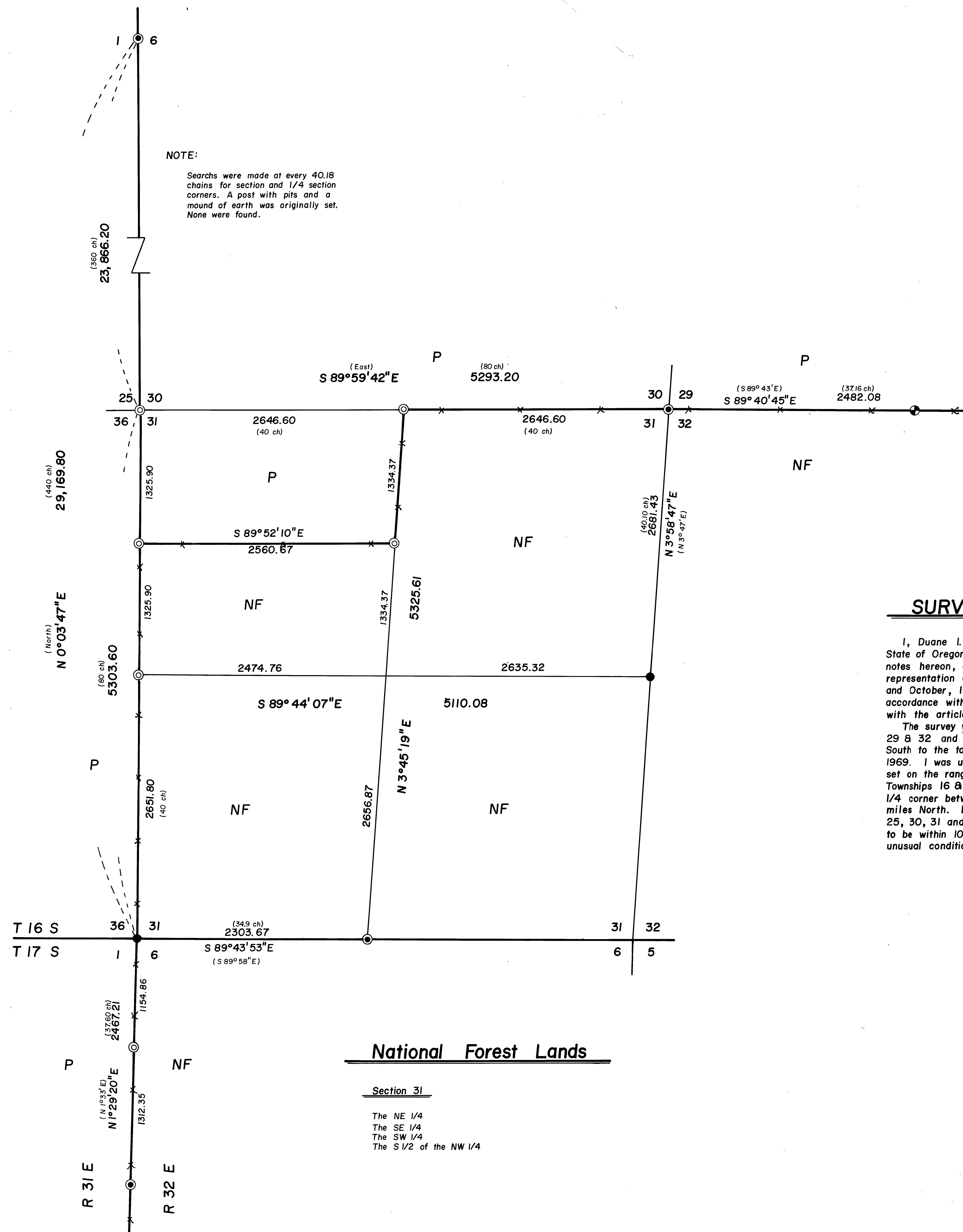
1 Meter = 3.2808333 Feet

SURVEYORS STATEMENT

I, Duane I. Griffith, Registered Land Surveyor in the State of Oregon, hereby certify that this plat and the notes hereon, or attached are a true and correct representation of the survey I made during September and October, 1981, for the U.S. Forest Service in accordance with the statutes of the State of Oregon and with the articles of my contract.

The survey was started at the 1/4 corner to Sections 29 & 32 and run West to the range line. I then run South to the township corner which was remonumented in 1969. I was unable to find any of the original corners set on the range line between the township corner to Townships 16 & 17 South, Ranges 31 & 32 East, and the 1/4 corner between Sections 1 & 6, five and one half miles North. I therefore proportion the corner to Sections 25, 30, 31 and 36. I find the creek call 1/2 mile North to be within 10 feet of its location. I find no other unusual conditions.

Duane I. Griffith
Duane I. Griffith
Baggett, Griffith and Associates
P.O. Box 576
La Grande, OR 97850



National Forest Lands

Section 31
The NE 1/4
The SE 1/4
The SW 1/4
The S 1/2 of the NW 1/4

RECEIVED AND FILED
DEC 24 1981
OFFICE OF COUNTY SURVEYOR
Attest: *[Signature]*

REGISTERED PROFESSIONAL LAND SURVEYOR
Duane I. Griffith
OREGON
DUANE I. GRIFFITH
644

BAGETT - GRIFFITH & ASSOCIATES La Grande, Oregon		
Map of Survey Survey in Section 31, Township 16 South, Range 32 East of the Willamette Meridian		
GRANT COUNTY, OREGON		
SURVEYED FOR	Malheur National Forest	
SURVEYED BY	d.i.g. - g.t.b. - r.g.r.	9 & 10/81
Scale: 1" = 600'	Drawn by: d.i.g. - r.g.r.	10/81