



BASIS OF BEARINGS

Solar Observation

LEGEND

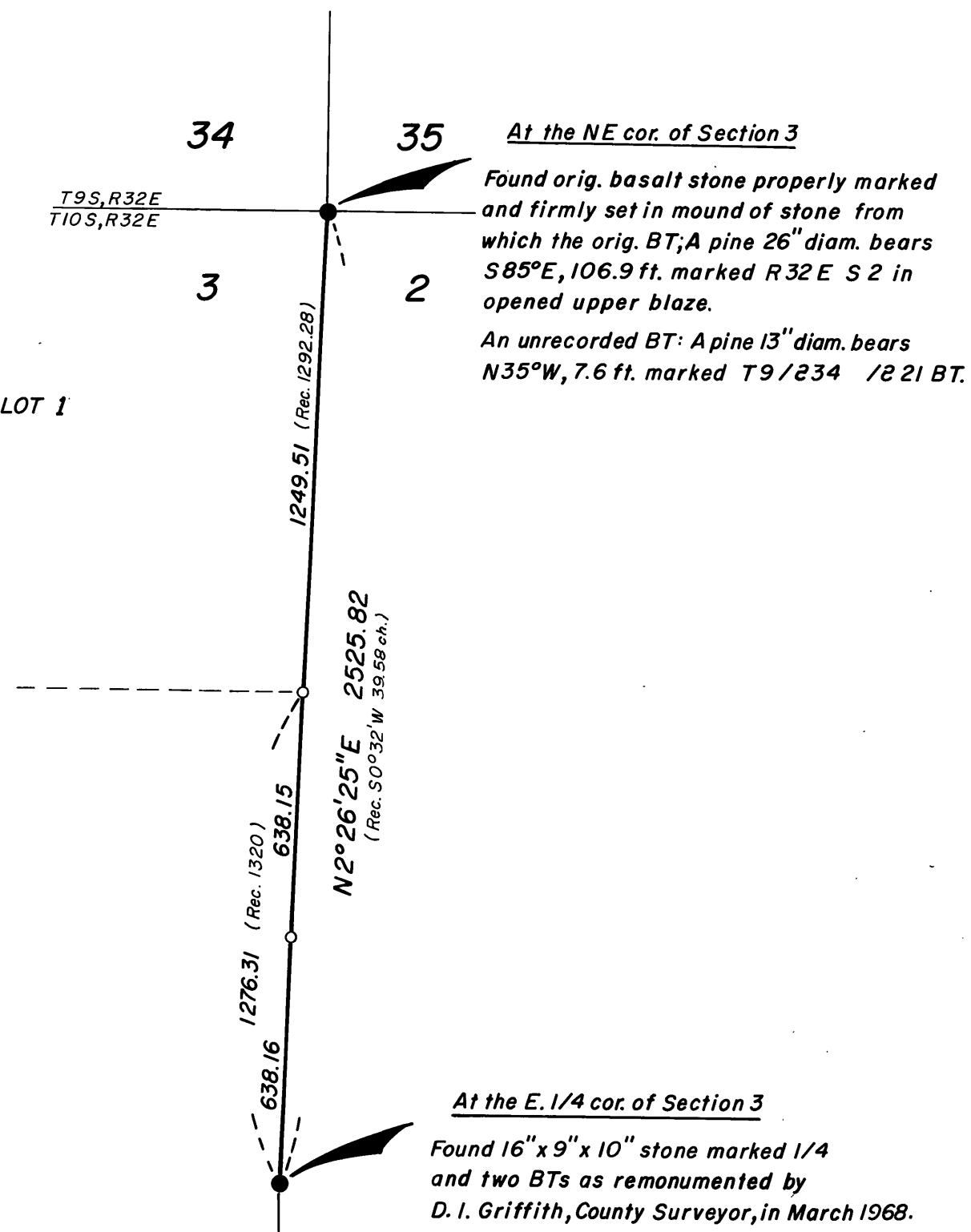
- Found monument of record
- Set 5/8" x 30" iron pin with attached plastic cap, marked B-G-A SURVEY MARKER

NARRATIVE:

This survey was performed at the request of Neil Marks to establish the SE corner of Gov't. lot 1, Section 3 and the SE corner of the NE 1/4 SE 1/4 NE 1/4, of Section 3.

A search was made of the available records pertaining to this survey. Field measurements were made to locate existing monuments at the E 1/4 corner and the NE corner of Section 3. New monuments were set at single proportionate measure between the found corners as shown hereon.

GOV'T. LOT 1



RECEIVED AND
FILED

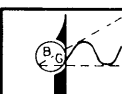
SEP 14 1981

OFFICE OF COUNTY SURVEYOR

Robert D. Baggett
Neil Marks

REGISTERED
PROFESSIONAL
LAND SURVEYOR

Robert D. Baggett
OREGON
JULY 12, 1963
ROBERT D. BAGETT
598

 BAGETT - GRIFFITH & ASSOCIATES John Day, Oregon		
MAP OF SURVEY		
N 1/2 of the E. bdy. of Section 3		
T10S, R32E, WM		
GRANT COUNTY, OREGON		
SURVEYED FOR	NEIL MARKS	
SURVEYED BY	RDB & WAP	8/27/81
Scale: 1" = 400'	Drawn by: WAP	8/28/81