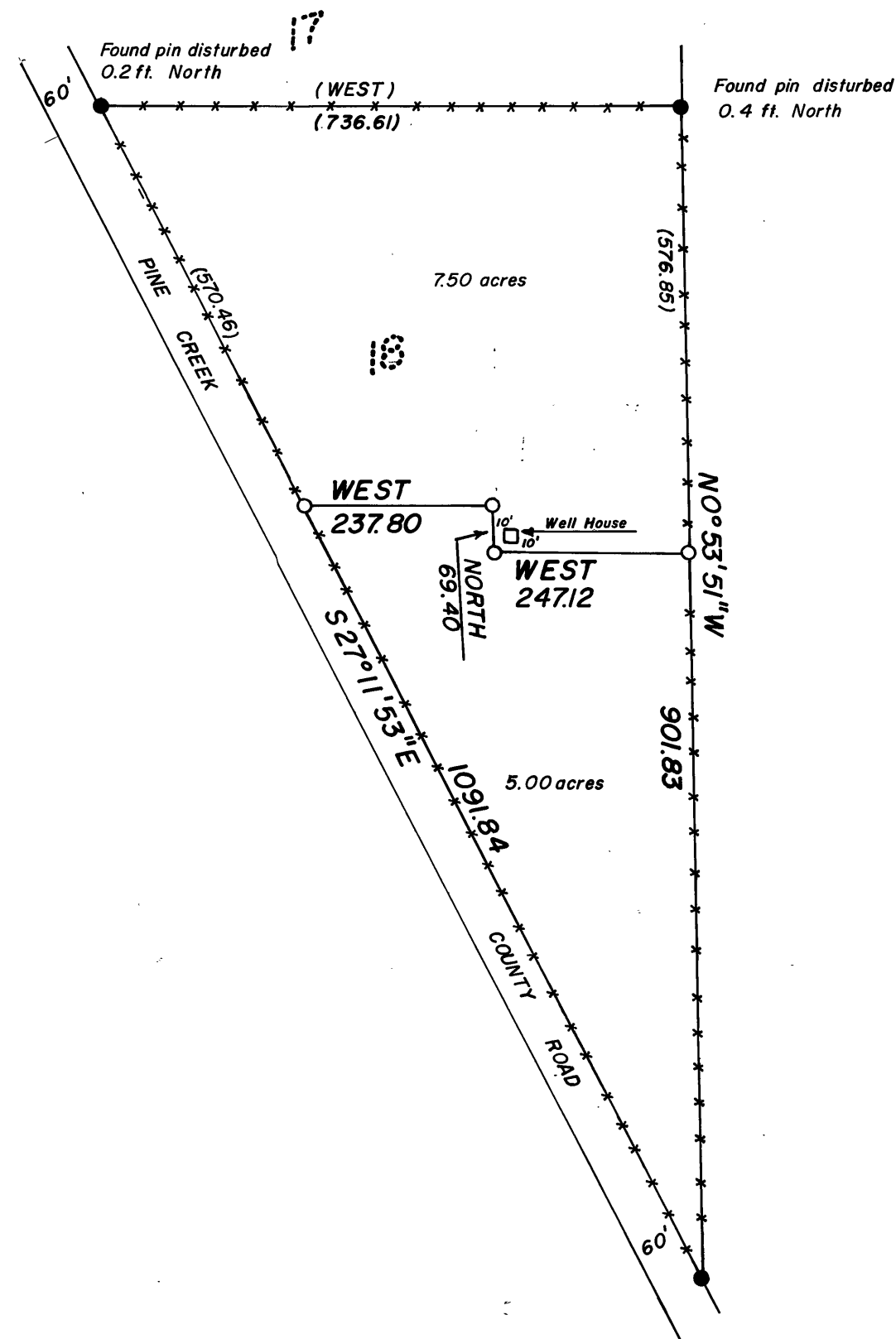


NARRATIVE

This survey was made at the request of John Milne to divide Lot 18 Pine Creek Park Subdivision into two parcels.

A search was made of the available records pertaining to this survey, field measurement were made to locate existing monuments. New monuments were set in accordance with the evidence found. The two monuments on the north line of said lot 18 have been disturbed in fencing operations and the NW cor. of said lot may also have been disturbed due to a buried telephone cable installation.



BASIS OF BEARINGS

PINE CREEK PARK SUBDIVISION PLAT

LEGEND

- Found monument of record
- Set 5/8" x 30" iron pin with attached plastic cap marked B-G-A SURVEY MARKER
- () Record bearing & distance
- Existing fenceline

REFERENCE MATERIAL

PINE CREEK PARK SUBDIVISION PLAT

RECEIVED AND
FILED

JUL 1 1981

OFFICE OF COUNTY SURVEYOR

Robert D. Bagett

AUG 1 1981

REGISTERED
PROFESSIONAL
LAND SURVEYOR

Robert D. Bagett

OREGON
JULY 12, 1963
ROBERT D. BAGETT
598

BAGETT - GRIFFITH & ASSOCIATES John Day Oregon Map of Survey		
DIVISION OF LOT 18, BLOCK 1, PINE CREEK PARK SUBDIVISION IN SEC. 26 T 13 S, R 32 E, W.M. GRANT COUNTY, OREGON		
SURVEYED FOR	JOHN MILNE	
SURVEYED BY	RDB-ARC	JUNE '81
Scale: 1"=20'	Drawn by: ARC	JUNE '81