

BASIS OF BEARINGS:

SOLAR OBSERVATION
Note: 32808 Ft = 100 Meter

LEGEND

- Set 3"x30" Galv. Iron Pipe With 3" Brass Cap For Corner Monument
- Found Brass Cap Monument of Record
- ▬ National Forest Boundary Posted (Steel Posts & Signs Set of max. 400' Intervals)
- () Record Bearing & Distance from Original G.L.O. Survey
- () Record Bearing & Distance from Map of Survey No. 599, as on file in the Office of the Grant County Surveyor.
- x— Fence Line

HISTORY

SURVEY METHOD: Electronic Distance Measuring Equipment & Theodolite, Running random Twp. through known(found) corners and providing control for the establishment of the required corners & marking of property line.

Township subdivision & exterior originally surveyed in 1881 by F.W. Campbell, under General Land Office Contract No. 380 in 1968 corners where Monumented by the Bureau of Land Management, as shown Lt. (B.L.M.)

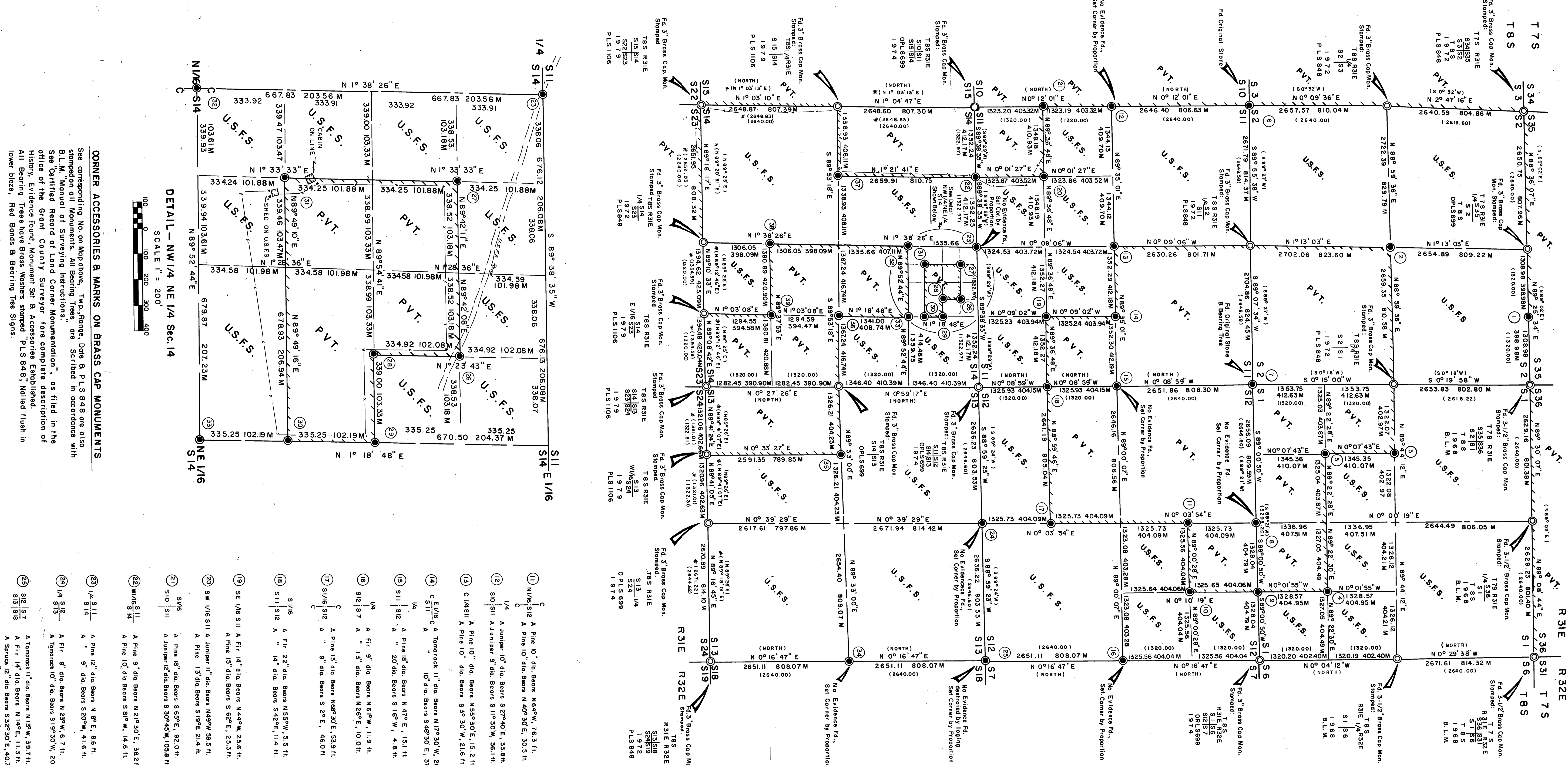
In 1972 Corners as shown Lt. where Monumented by this Surveyor (P.L.S. 648)

In 1974 Corners as shown Lt. where Monumented By P.L.S. 639

In 1979 Portions of this Township where Surveyed & Corners Monumented by P.L.S. 1106.(See Map of Survey No. 599 as on file in the Office of the Grant County Surveyor.)

I, Douglas M. Ferguson, Registered Professional Land Surveyor in the State of Oregon, hereby certify that this plat and the notes hereon, or attached, are a correct representation of the survey performed, during June - November 1980, for the U.S. Forest Service, in accordance with the statutes of the State of Oregon and with the articles of my contract.

Douglas M. Ferguson
Registered Professional Land Surveyor
Oregon License 848



DETAIL - NW 1/4 NE 1/4 Sec. 14

SCALE 1" = 200'

CORNER ACCESSORIES & MARKS ON BRASS CAP MONUMENTS

See corresponding No. on Map above, Twp. Range, Date & P.L.S. 648 cap also stamped on all monuments. All bearing trees, are Scribbled in accordance with B.L.M. Manual of Surveying Instructions.

See Certified Record of Land Corner Monumentation, as filed in the Office of the Grant County Surveyor for complete description of history, Evidence Found, Monument Set & Accessories Established.

All Bearing Trees have Brass Washers stamped "P.L.S. 648" Nailed flush in lower discs, Red Bands & Bearing Tree Signs.

- 1 E 1/2 S35 A Pine 9" dia. Beers N 44° E, 33.6 ft.
- 2 C 1/4 S2 A Pine 15" dia. Beers N 7° E, 73.6 ft.
- 3 C W 1/8 S1 A Pine 15" dia. Beers N 22° W, 45.0 ft.
- 4 SE 1/8 S1 A Steel Post Beers South, 6.0 ft.
- 5 SW 1/8 S1 A Pine 10" dia. Beers N 66° 30' E, 76.1 ft.
- 6 S 1/2 S1 A Pine 14" dia. Beers N 18° E, 18.7 ft.
- 7 S 2 1/2 S1 A Pine 15" dia. Beers N 22° W, 45.0 ft.
- 8 1/4 S1 A Steel Post Beers West, 34.5 ft.
- 9 1/4 S1 A Pine 10" dia. Beers N 6° E, 19.7 ft.
- 10 NE 1/8 S1 A Pine 18" dia. Beers N 56° E, 28.8 ft.
- 11 N 1/2 S12 A Fir 18" dia. Beers S 46° 30' E, 13.7 ft.
- 12 S 2 1/2 S1 A Pine 15" dia. Beers N 22° W, 45.0 ft.
- 13 A Steel Post Beers S 45° E, 5.9 ft.
- 14 1/4 S1 A Pine 10" dia. Beers N 6° E, 19.7 ft.
- 15 NE 1/8 S1 A Pine 18" dia. Beers N 56° E, 28.8 ft.
- 16 1/4 S1 A Pine 10" dia. Beers N 6° E, 19.7 ft.
- 17 A Pine 13" dia. Beers S 45° E, 4.8 ft.
- 18 A Fir 22" dia. Beers N 53° W, 3.5 ft.
- 19 A Fir 9" dia. Beers N 69° W, 10.9 ft.
- 20 A Pine 13" dia. Beers S 19° E, 21.4 ft.
- 21 A Pine 18" dia. Beers N 42° W, 25.6 ft.
- 22 A Pine 15" dia. Beers S 62° E, 25.3 ft.
- 23 A Pine 13" dia. Beers S 19° E, 21.4 ft.
- 24 A Fir 22" dia. Beers N 53° W, 3.5 ft.
- 25 A Fir 9" dia. Beers N 69° W, 10.9 ft.
- 26 A Pine 13" dia. Beers S 19° E, 21.4 ft.
- 27 A Fir 22" dia. Beers N 53° W, 3.5 ft.
- 28 A Fir 9" dia. Beers N 69° W, 10.9 ft.
- 29 A Pine 13" dia. Beers S 19° E, 21.4 ft.
- 30 A Fir 22" dia. Beers N 53° W, 3.5 ft.
- 31 A Fir 9" dia. Beers N 69° W, 10.9 ft.
- 32 A Pine 13" dia. Beers S 19° E, 21.4 ft.
- 33 A Fir 22" dia. Beers N 53° W, 3.5 ft.
- 34 A Fir 9" dia. Beers N 69° W, 10.9 ft.
- 35 A Pine 13" dia. Beers S 19° E, 21.4 ft.
- 36 A Fir 22" dia. Beers N 53° W, 3.5 ft.
- 37 A Fir 9" dia. Beers N 69° W, 10.9 ft.
- 38 A Pine 13" dia. Beers S 19° E, 21.4 ft.
- 39 A Fir 22" dia. Beers N 53° W, 3.5 ft.
- 40 A Fir 9" dia. Beers N 69° W, 10.9 ft.
- 41 A Pine 13" dia. Beers S 19° E, 21.4 ft.
- 42 A Fir 22" dia. Beers N 53° W, 3.5 ft.
- 43 A Fir 9" dia. Beers N 69° W, 10.9 ft.
- 44 A Pine 13" dia. Beers S 19° E, 21.4 ft.
- 45 A Fir 22" dia. Beers N 53° W, 3.5 ft.
- 46 A Fir 9" dia. Beers N 69° W, 10.9 ft.
- 47 A Pine 13" dia. Beers S 19° E, 21.4 ft.
- 48 A Fir 22" dia. Beers N 53° W, 3.5 ft.
- 49 A Fir 9" dia. Beers N 69° W, 10.9 ft.
- 50 A Pine 13" dia. Beers S 19° E, 21.4 ft.
- 51 A Fir 22" dia. Beers N 53° W, 3.5 ft.
- 52 A Fir 9" dia. Beers N 69° W, 10.9 ft.
- 53 A Pine 13" dia. Beers S 19° E, 21.4 ft.
- 54 A Fir 22" dia. Beers N 53° W, 3.5 ft.
- 55 A Fir 9" dia. Beers N 69° W, 10.9 ft.
- 56 A Pine 13" dia. Beers S 19° E, 21.4 ft.
- 57 A Fir 22" dia. Beers N 53° W, 3.5 ft.
- 58 A Fir 9" dia. Beers N 69° W, 10.9 ft.
- 59 A Pine 13" dia. Beers S 19° E, 21.4 ft.
- 60 A Fir 22" dia. Beers N 53° W, 3.5 ft.
- 61 A Fir 9" dia. Beers N 69° W, 10.9 ft.
- 62 A Pine 13" dia. Beers S 19° E, 21.4 ft.
- 63 A Fir 22" dia. Beers N 53° W, 3.5 ft.
- 64 A Fir 9" dia. Beers N 69° W, 10.9 ft.
- 65 A Pine 13" dia. Beers S 19° E, 21.4 ft.
- 66 A Fir 22" dia. Beers N 53° W, 3.5 ft.
- 67 A Fir 9" dia. Beers N 69° W, 10.9 ft.
- 68 A Pine 13" dia. Beers S 19° E, 21.4 ft.
- 69 A Fir 22" dia. Beers N 53° W, 3.5 ft.
- 70 A Fir 9" dia. Beers N 69° W, 10.9 ft.
- 71 A Pine 13" dia. Beers S 19° E, 21.4 ft.
- 72 A Fir 22" dia. Beers N 53° W, 3.5 ft.
- 73 A Fir 9" dia. Beers N 69° W, 10.9 ft.
- 74 A Pine 13" dia. Beers S 19° E, 21.4 ft.
- 75 A Fir 22" dia. Beers N 53° W, 3.5 ft.
- 76 A Fir 9" dia. Beers N 69° W, 10.9 ft.
- 77 A Pine 13" dia. Beers S 19° E, 21.4 ft.
- 78 A Fir 22" dia. Beers N 53° W, 3.5 ft.
- 79 A Fir 9" dia. Beers N 69° W, 10.9 ft.
- 80 A Pine 13" dia. Beers S 19° E, 21.4 ft.
- 81 A Fir 22" dia. Beers N 53° W, 3.5 ft.
- 82 A Fir 9" dia. Beers N 69° W, 10.9 ft.
- 83 A Pine 13" dia. Beers S 19° E, 21.4 ft.
- 84 A Fir 22" dia. Beers N 53° W, 3.5 ft.
- 85 A Fir 9" dia. Beers N 69° W, 10.9 ft.
- 86 A Pine 13" dia. Beers S 19° E, 21.4 ft.
- 87 A Fir 22" dia. Beers N 53° W, 3.5 ft.
- 88 A Fir 9" dia. Beers N 69° W, 10.9 ft.
- 89 A Pine 13" dia. Beers S 19° E, 21.4 ft.
- 90 A Fir 22" dia. Beers N 53° W, 3.5 ft.
- 91 A Fir 9" dia. Beers N 69° W, 10.9 ft.
- 92 A Pine 13" dia. Beers S 19° E, 21.4 ft.
- 93 A Fir 22" dia. Beers N 53° W, 3.5 ft.
- 94 A Fir 9" dia. Beers N 69° W, 10.9 ft.
- 95 A Pine 13" dia. Beers S 19° E, 21.4 ft.
- 96 A Fir 22" dia. Beers N 53° W, 3.5 ft.
- 97 A Fir 9" dia. Beers N 69° W, 10.9 ft.
- 98 A Pine 13" dia. Beers S 19° E, 21.4 ft.
- 99 A Fir 22" dia. Beers N 53° W, 3.5 ft.
- 100 A Fir 9" dia. Beers N 69° W, 10.9 ft.

RECEIVED AND FILED
JAN 12 1981
OFFICE OF COUNTY SUPERVISOR
GRANT COUNTY, OREGON
DORIS M. FERGUSON

REGISTERED PROFESSIONAL LAND SURVEYOR
DOUGLAS M. FERGUSON

FERGUSON SURVEYING & ENGINEERING
Map of Survey
SUBDIVISION OF SECTIONS
T 8 S, R 31 E
GRANT COUNTY, OREGON
For: Unclassified National Forest By: D.M. Ferguson
Date: 1980
Sheet 1 of 1
Scale: 1" = 1000'
Drawn By: D.M. F.

MAP OF SURVEY NO. 645