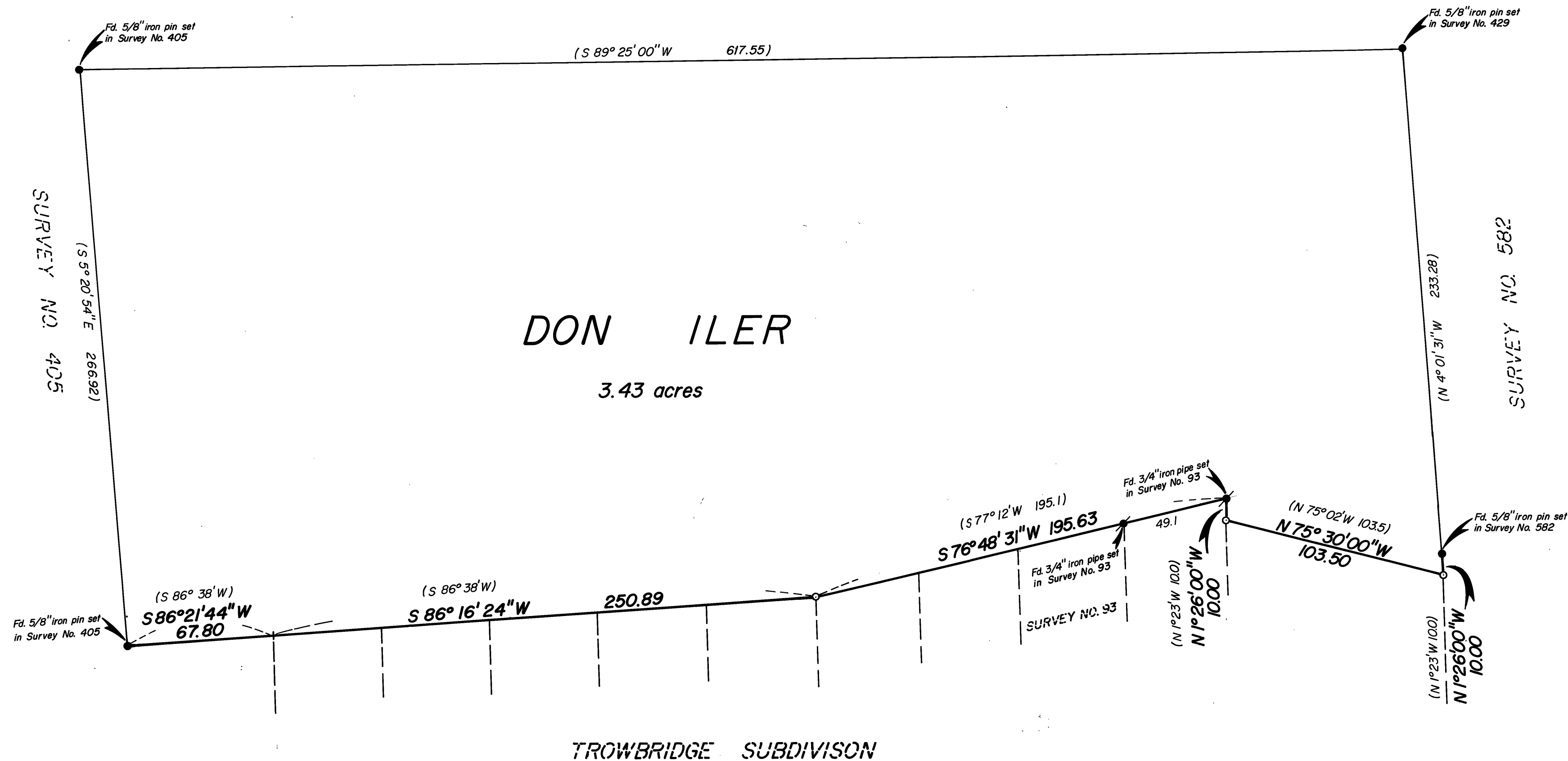


SURVEY NO. 429



BASIS OF BEARINGS
SOLAR OBSERVATION

LEGEND

- Found 3/4" iron pipe, monument of record
- Found 5/8" iron pin, monument of record
- Set 5/8" x 30" iron pin
- Record bearing and distance

REFERENCES

Map of Survey Nos. 93, 405, 429, and 582
TROWBRIDGE SUBDIVISION plat

**RECEIVED AND
FILED**

OCT 31 1980

OFFICE OF COUNTY SURVEYOR

Robert D. Bagett
Attest: *John L. ...*

NARRATIVE:

This survey was performed at the request of Don Iler to locate the south line of his property situated in the NE 1/4 SW 1/4 of Section 23, T. 13 S., R. 31 E., W.M., City of John Day, Grant Co. Oregon.

A search was made of the available records pertaining to this survey. Field measurements were made to locate existing monuments. New monuments were set in accordance with the evidence found as shown hereon.

REGISTERED
PROFESSIONAL
LAND SURVEYOR

Robert D. Bagett
OREGON
JULY 12, 1983
ROBERT D. BAGETT
598

BAGETT - GRIFFITH & ASSOCIATES John Day Oregon		
A LINE SITUATED IN THE NE 1/4 SW 1/4 OF SECTION 23, T. 13 S., R. 31 E., W.M. CITY OF JOHN DAY GRANT COUNTY, OREGON		
SURVEYED FOR	DON ILER	
SURVEYED BY	R.D.B. & G.L.E.	9/11/80
Scale: 1" = 40'	Drawn by: G.L.E.	9/29/80