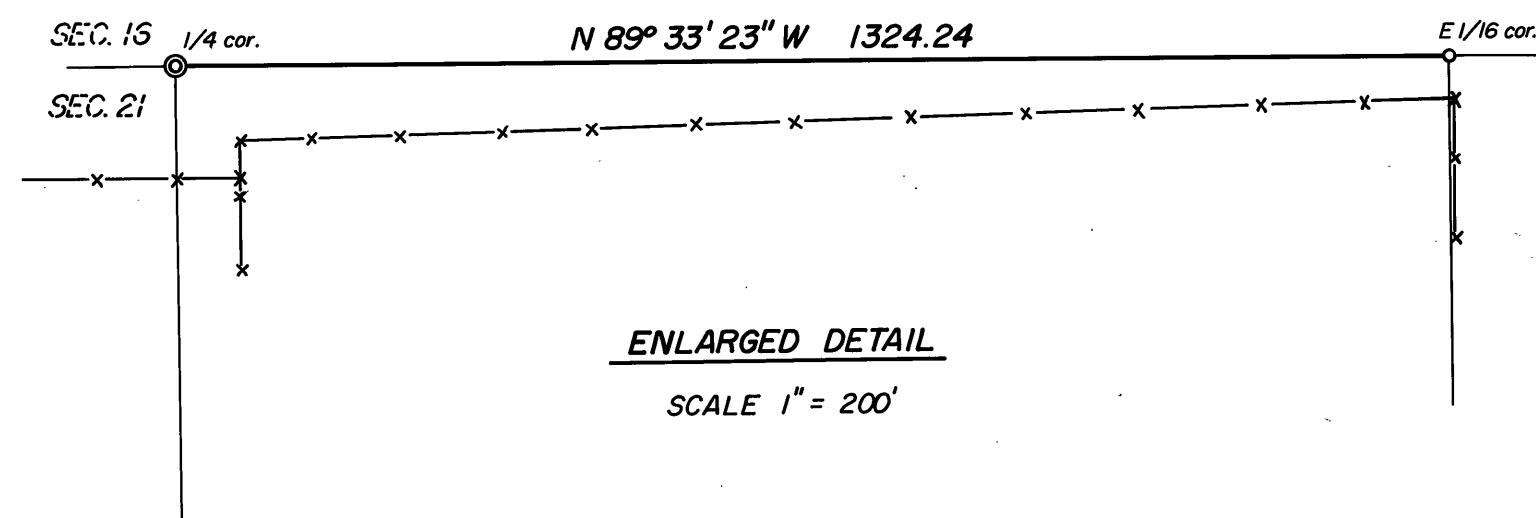
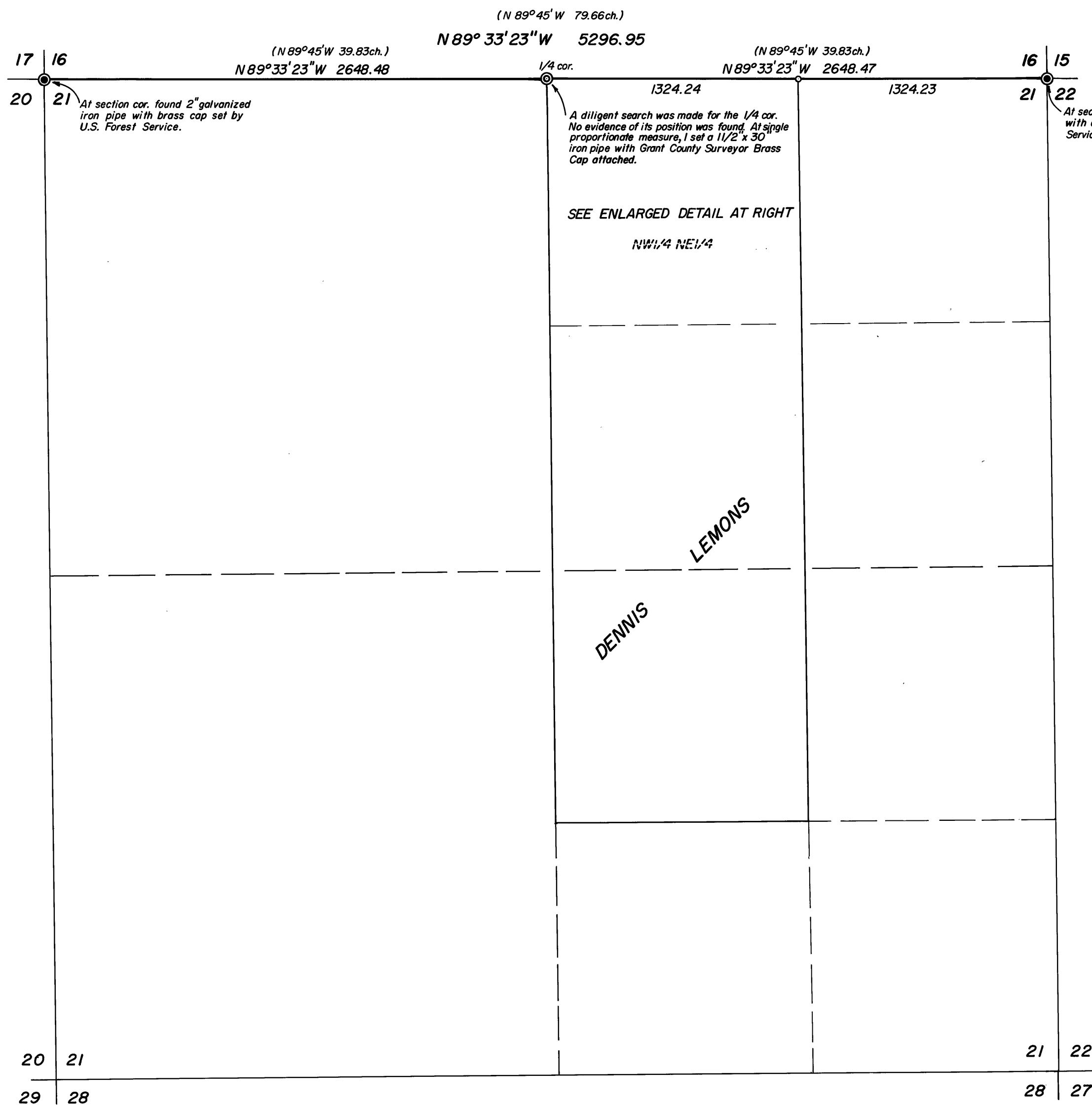




**BASIS OF BEARINGS**  
SOLAR OBSERVATION



**LEGEND**

- SET 5/8" x 30" IRON PIN
- ( ) RECORD BEARING AND DISTANCE
- x—x FENCE

**REFERENCES**

G.L.O. FIELD NOTES  
RECORDED REMONUMENTATION SHEETS

REGISTERED  
PROFESSIONAL  
LAND SURVEYOR  
  
*Robert D. Baggett*  
  
OREGON  
JULY 12, 1983  
ROBERT D. BAGGETT  
598

NARRATIVE: This survey was performed at the request of Brice Lemons to locate the north line of the NW 1/4 NE 1/4 of Section 21, T.15S., R.30E., W.M.

A search was made of the available records pertaining to this survey. Field measurements were made to locate existing monuments. New monuments were set in accordance with evidence found.

NOTE: See recorded remonumentation sheets for information concerning remonumented corners.

SCALE 1" = 500'

RECEIVED AND  
FILED

JUN 13 1980

OFFICE OF COUNTY SURVEYOR  
*Robert D. Baggett*  
Attest: *[Signature]* Co. Clerk

BAGETT, GRIFFITH & ASSOCIATES		
John Day, Oregon		
Map of Survey		
NORTH LINE NW 1/4 NE 1/4 SECTION 21, T.15 S., R. 30 E., W.M.		
GRANT COUNTY, OREGON		
SURVEYED FOR	BRICE LEMONS	
SURVEYED BY	R.D.B. & G.L.E.	5/5-5/6/80
Scale: AS SHOWN	Drawn by: G.L.E.	5/7/80