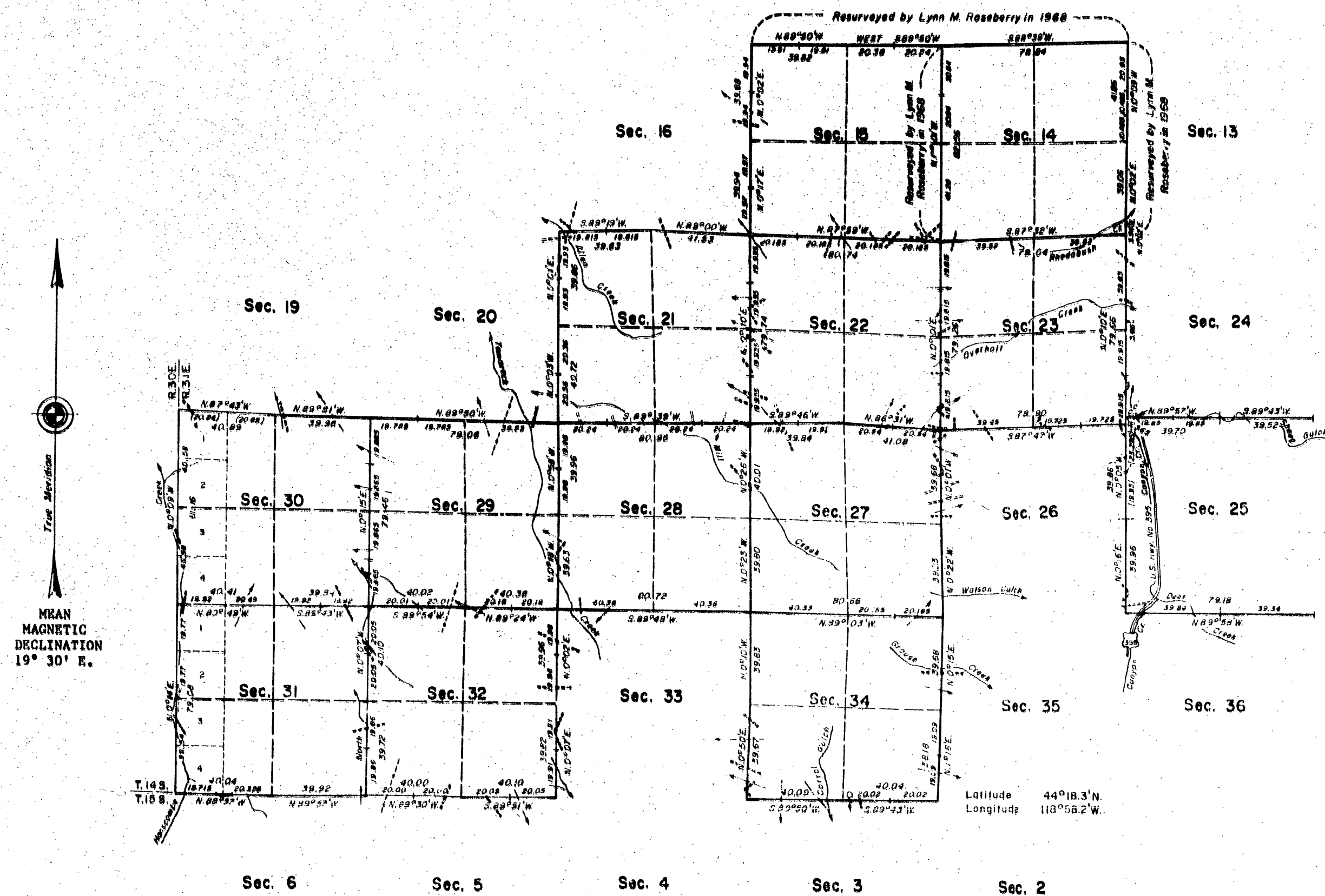


# TOWNSHIP 14 SOUTH, RANGE 31 EAST, OF THE WILLAMETTE MERIDIAN, OREGON.

## DEPENDENT RESURVEY



MKAN  
MAGNETIC  
DECLINATION  
19° 30' E.

Scale in Chains  
0 10 20 30 40 50 60 70 80

Timber in this area consists of pine, fir, juniper, mountain mahogany, and cottonwood.

DEE

This plat represents a retracement and reestablishment of a portion of the south and west boundaries and a portion of the subdivisional lines, T. 14 S., R. 31 E., Willamette Meridian, Oregon, designed to restore the corners in their true original locations according to the best available evidence.

Except as indicated hereon, the lottings and areas are as shown on the plat approved March 19, 1881.

The north one mile of the east boundary, the west and south boundaries of the township, and a portion of the subdivisional lines were surveyed by Hanford Robb and Samuel W. Lackland, in 1880.

The remainder of the east boundary of the township and subdivisional lines were surveyed and a portion of the subdivisional lines was retraced by William N. Gibb, in 1910.

The south five miles of the east boundary of the township were dependantly resurveyed by George F. Rigby, in 1939.

A portion of the subdivisional lines was dependently resurveyed, section 11 was subdivided, and Tract 37 in section 11 was surveyed by Lynn M. Roseberry, in 1968.

The resurvey was executed by Peter A. Peterson and Craig L. Manessa, Cadastral Surveyors, beginning April 4, 1978, and completed July 31, 1978, under Special Instructions dated February 17, 1978, and Supplemental Special Instructions dated June 12, 1978, which provide for the surveys included under Group No. 947, Oregon.

UNITED STATES DEPARTMENT OF THE INTERIOR  
BUREAU OF LAND MANAGEMENT  
Denver, Colorado February 25, 1980

This plat is strictly conformable to the approved field notes, and the survey, having been correctly executed in accordance with the requirements of law and the regulations of this bureau, is hereby accepted.

For the Director

RECEIVED AND  
FILED

MAY 12 1980

OFFICE OF COUNTY SURVEYOR

*John A. Rivera*  
Attorney

*J. L. Manessa*  
Chief, Cadastral Survey  
Registration and Approval Staff

MAP OF SURVEY NO. 613